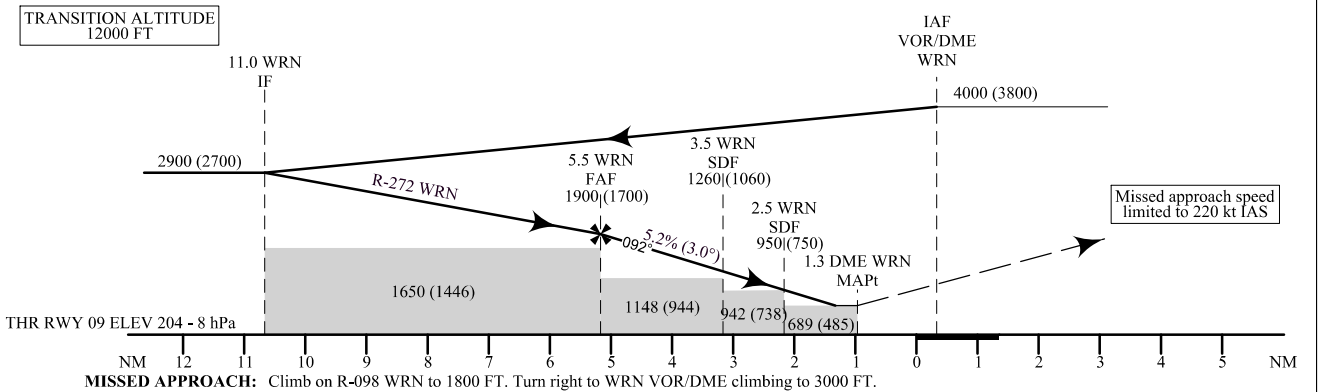
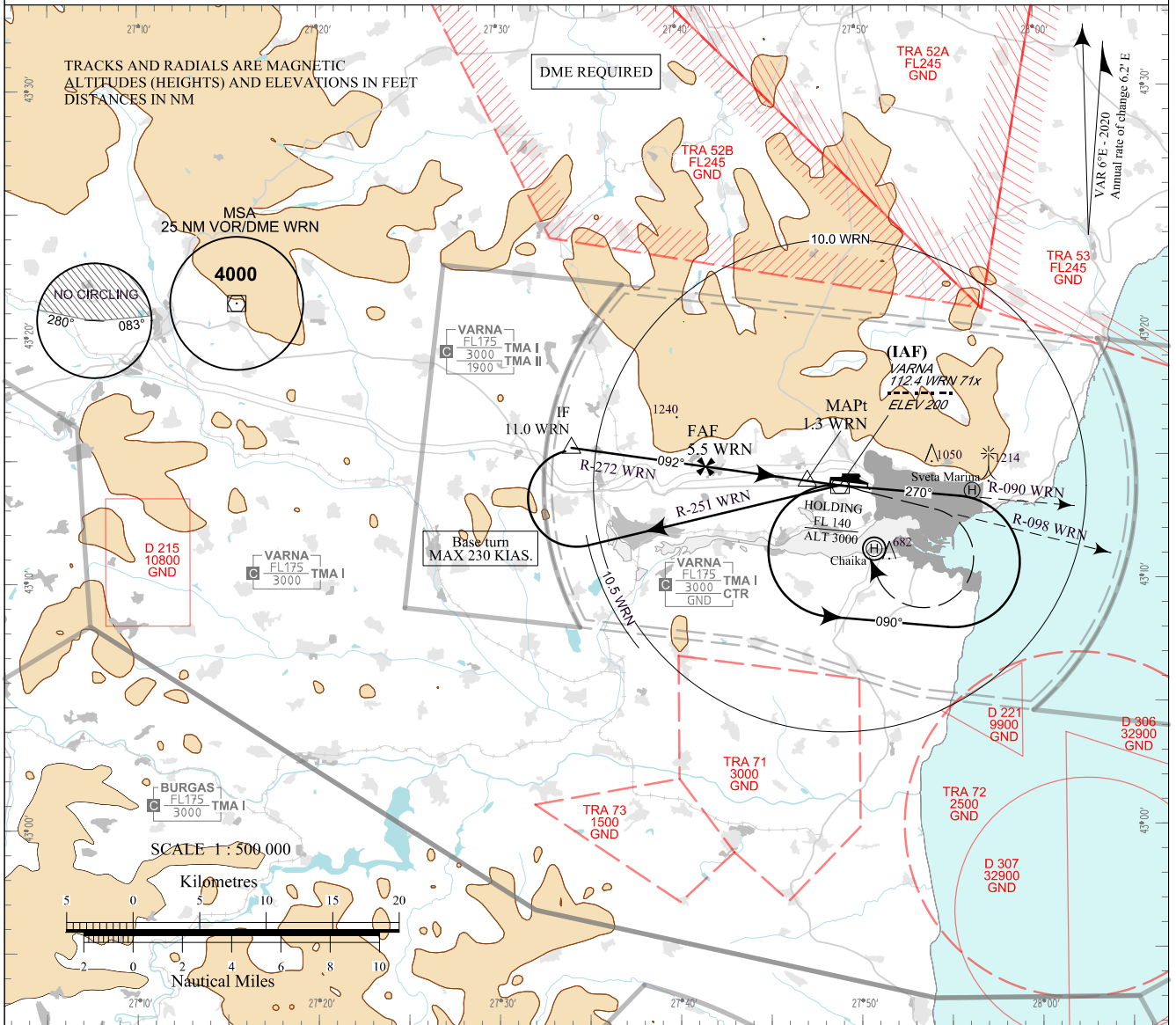


**INSTRUMENT  
APPROACH  
CHART - ICAO**

AERODROME ELEV 230 - 9 hPa      APP 124.600      TWR 119.500      ATIS 126.880  
 THR RWY 09 ELEV 204 - 8 hPa      130.450      118.900  
    309.025      377.600  
 OCH RELATED TO THR RWY 09 ELEV      121.500      121.500  
 CIRCLING OCH RELATED TO AD ELEV      243.000      243.000

**VARNA  
VOR  
RWY 09**



OCA (OCH)		A	B	C	D
Straight-in Approach	m		210 (150)		
	ft		690 (490)		
SDF not received	m		350 (290)		
	ft		1150 (950)		
Circling	m	215 (145)	275 (205)	350 (280)	400 (330)
	ft	700 (470)	900 (670)	1150 (920)	1300 (1070)

CIRCLING SOUTH OF AD ONLY

DME WRN NM / km	5 / 9.3	4 / 7.4	3 / 5.6	2 / 3.7
DIST THR NM / km	4.7 / 8.7	3.7 / 6.9	2.7 / 5.0	1.7 / 3.1
ALT (HGT) ft	1740 (1540)	1430 (1220)	1110 (910)	790 (590)
ALT (HGT) m	530 (470)	435 (375)	340 (275)	245 (180)

GS	kt	60	80	100	120	140	160	180
FAF - MAPt 4.2 NM	min:sec	4:12	3:09	2:31	2:06	1:48	1:35	1:24
Rate of descent	ft/min	316	421	527	632	737	843	948

Timing is not authorized for defining MAPt

**See page LBWN AD 2 - 61.1 for non-RNAV fixes coordinates and other data.**