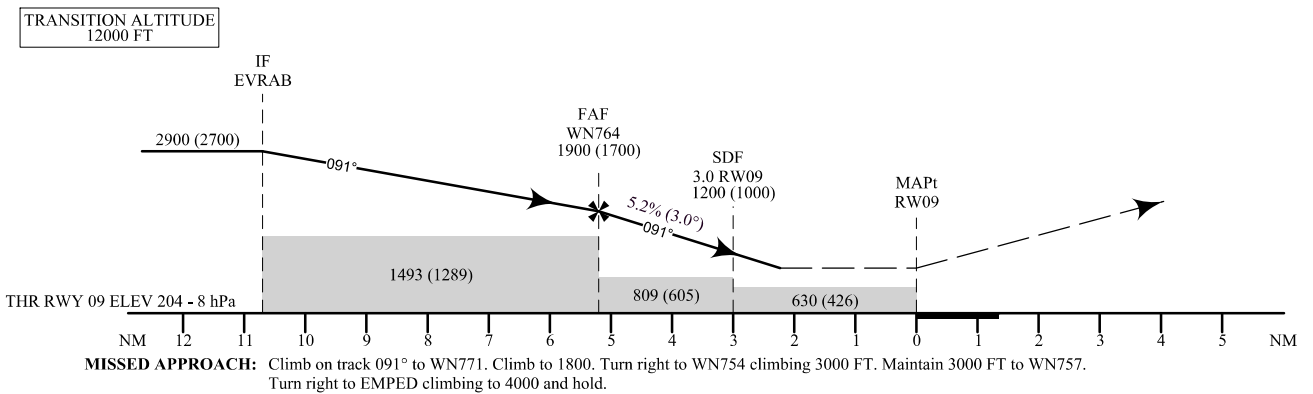
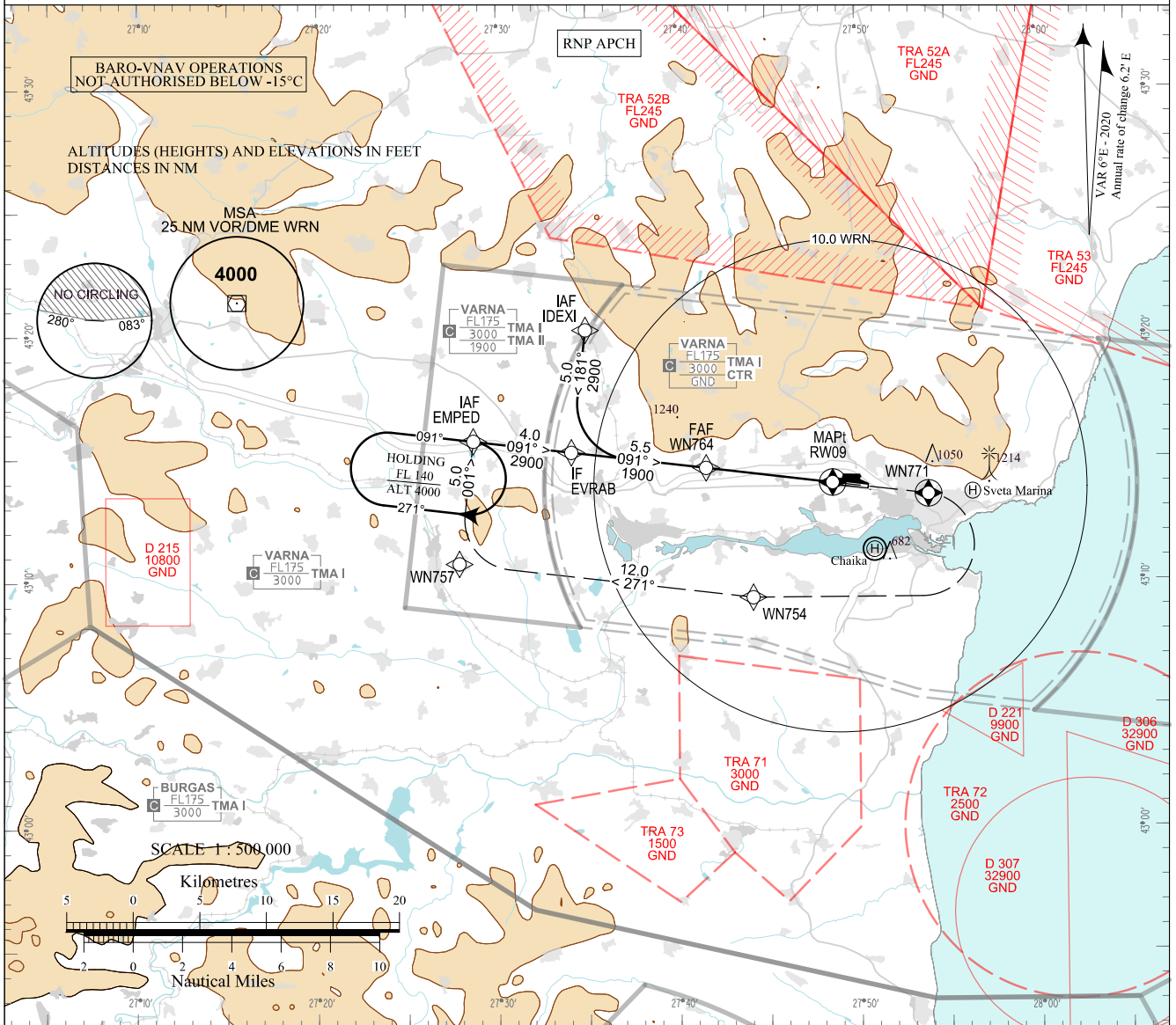


**INSTRUMENT
APPROACH
CHART - ICAO**

AERODROME ELEV 230 - 9 hPa APP 124.600 TWR 119.500 ATIS 126.880
THR RWY 09 ELEV 204 - 8 hPa 130.450 118.900
309.025 377.600
OCH RELATED TO THR RWY 09 ELEV 121.500 121.500
CIRCLING OCH RELATED TO AD ELEV 243.000 243.000

**VARNA
RNP
RWY 09**



OCA (OCH)		LNAV/VNAV				LNAV
		A	B	C	D	A, B, C, D
Missed APCH gradient 2.5%	m	220 (160)	225 (165)	230 (170)	235 (175)	290 (230)
	ft	720 (520)	730 (530)	750 (550)	770 (570)	950 (750)
Missed APCH gradient 4.0%	m	170 (110)	175 (115)	180 (120)	190 (130)	275 (215)
	ft	560 (360)	570 (370)	590 (390)	630 (430)	900 (700)
Missed APCH gradient 5.0%	m	150 (90)	155 (95)	160 (100)	175 (115)	260 (200)
	ft	490 (290)	500 (300)	530 (330)	560 (360)	850 (650)

DIST THR NM / km	5 / 9.3	4 / 7.4	3 / 5.6
ALT (HGT) ft	1840 (1630)	1520 (1320)	1200 (1000)
ALT (HGT) m	560 (500)	465 (400)	365 (305)

OCA (OCH)		A	B	C	D
		m	215 (145)	275 (205)	350 (280)
Circling	m	215 (145)	275 (205)	350 (280)	400 (330)
	ft	700 (470)	900 (670)	1150 (920)	1300 (1070)

GS	kt	60	80	100	120	140	160	180
FAF - MAPt 5.2 NM	min:sec	5:12	3:54	3:07	2:36	2:14	1:57	1:44
Rate of descent	ft/min	316	421	527	632	737	843	948

Timing is not authorized for defining MAPt

Instrument approach procedures

P/T	WPT ID	Flyover	Track MAG (GEO)	DIST NM	Turn Direction	Speed KT	ALT FT
From IAF IDEXI							
IF	IDEXI / IAF	-	-	-	-	220-	4000+
TF	EVRAB / IF	-	181°(186.7°T)	5.0	Left	190-	2900+
TF	WN764 / FAF	-	091°(096.7°T)	5.5	-	-	1900+
TF	RW09 / MAPt	Yes	091°(096.8°T)	5.2	-	-	-
CF	WN771	Yes	091°(096.9°T)	-	-	-	-
CA	-	-	091°(096.9°T)	-	Right	185-	1800+
DF	WN754	-	-	-	Right	-	-
TF	WN757	-	271°(276.9°T)	12.0	Right	220-	3000-
TF	EMPED MAHF	-	001°(006.7°T)	5.0	-	220-	4000+
From IAF EMPED							
IF	EMPED / IAF	-	-	-	-	220-	4000+
TF	EVRAB / IF	-	091°(096.7°T)	4.0	-	190-	2900+
TF	WN764 / FAF	-	091°(096.7°T)	5.5	-	-	1900+
TF	RW09 / MAPt	Yes	091°(096.8°T)	5.2	-	-	-
CF	WN771	Yes	091°(096.9°T)	-	-	-	-
CA	-	-	091°(096.9°T)	-	Right	185-	1800+
DF	WN754	-	-	-	Right	-	-
TF	WN757	-	271°(276.9°T)	12.0	Right	220-	3000-
TF	EMPED MAHF	-	001°(006.7°T)	5.0	-	220-	4000+

Holding

P/T	WPT ID	Flyover	Track MAG (GEO)	DIST NM	Turn Direction	Speed KT	ALT FT
HM	EMPED	Yes	091°(096.6°T)	1 min	Right	-	4000+

See page LBWN AD 2 - 61.1 for waypoint coordinates