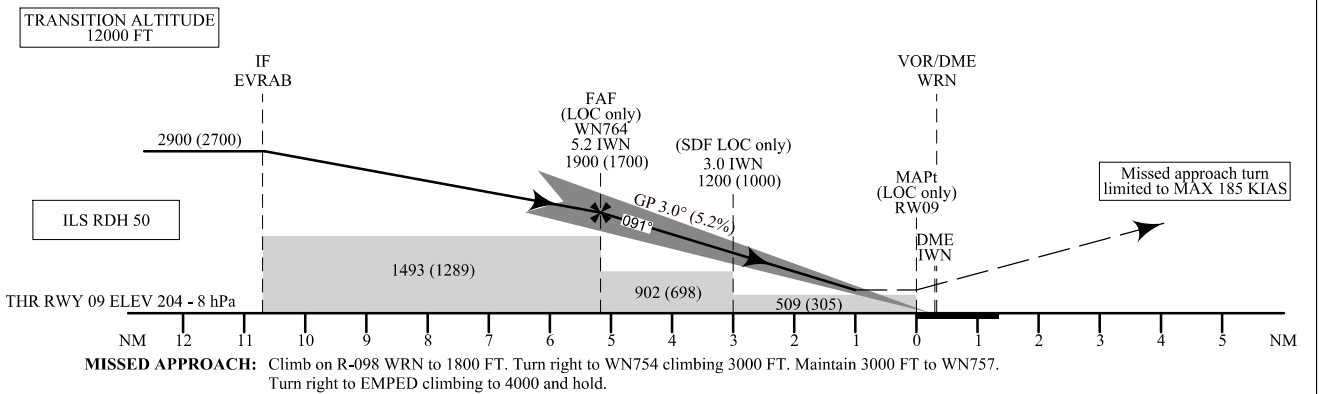
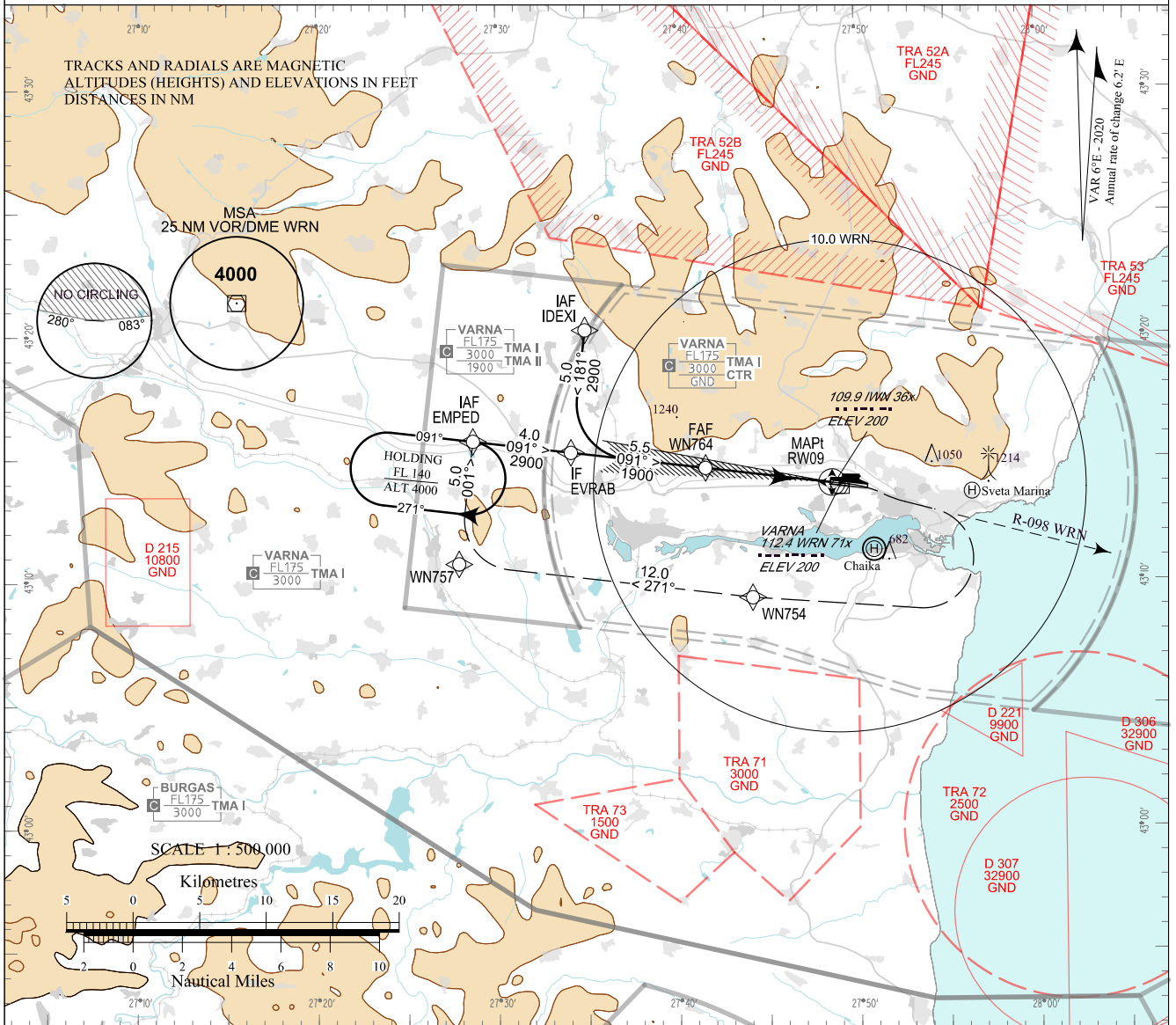


**INSTRUMENT
APPROACH
CHART - ICAO**

AERODROME ELEV 230 - 9 hPa APP 124.600 TWR 119.500 ATIS 126.880
THR RWY 09 ELEV 204 - 8 hPa 130.450 118.900
309.025 377.600
OCH RELATED TO THR RWY 09 ELEV 121.500 121.500
CIRCLING OCH RELATED TO AD ELEV 243.000 243.000

**VARNA
ILS z or LOC z
RWY 09**



OCA (OCH)	A	B	C	D
CAT I Missed APCH gradient 2.5%	m 133 (71) ft 437 (233)	136 (74) 447 (243)	139 (77) 457 (253)	142 (80) 466 (262)
CAT I Missed APCH gradient 4.0%	m 116 (54) ft 381 (177)	119 (57) 391 (187)	122 (60) 401 (197)	125 (63) 410 (207)
LOC only	m 180 (120) ft 580 (380)			
SDF not received	m 280 (215) ft 910 (710)			
Circling	m 215 (145) ft 700 (470)	275 (205) 900 (670)	350 (280) 1150 (920)	400 (330) 1300 (1070)

DME IWN NM / km	5 / 9.3	4 / 7.4	3 / 5.6	2 / 3.7
ALT (HGT) ft	1840 (1640)	1520 (1320)	1200 (1000)	890 (690)
ALT (HGT) m	560 (500)	465 (405)	370 (310)	270 (210)

DME IWN reads ZERO at THR 09

GS	kt	60	80	100	120	140	160	180
FAF - MAPt 5.2 NM	min:sec	5:12	3:54	3:07	2:36	2:14	1:57	1:44
Rate of descent	ft/min	316	421	527	632	737	843	948

CIRCLING SOUTH OF AD ONLY

Timing is not authorized for defining MAPt

Instrument approach procedures

P/T	WPT ID	Flyover	Track MAG (GEO)	DIST NM	Turn Direction	Speed KT	ALT FT
From IAF IDEXI							
IF	IDEXI / IAF	-	-	-	-	220-	4000+
TF	EVRAB / IF	-	181°(186.7°T)	5.0	Left	190-	2900+
TF	WN764 / FAF	-	091°(096.7°T)	5.5	-	-	1900+
TF	RW09 / MAPt	Yes	091°(096.8°T)	5.2	-	-	-
Climb on R - 098 WRN to 1800FT. Turn right to WN754.							
DF	WN754	-	-	-	Right	-	-
TF	WN757	-	271°(276.9°T)	12.0	Right	220-	3000-
TF	EMPED MAHF	-	001°(006.7°T)	5.0	-	220-	4000+
From IAF EMPED							
IF	EMPED / IAF	-	-	-	-	220-	4000+
TF	EVRAB / IF	-	091°(096.7°T)	4.0	-	190-	2900+
TF	WN764 / FAF	-	091°(096.7°T)	5.5	-	-	1900+
TF	RW09 / MAPt	Yes	091°(096.8°T)	5.2	-	-	-
Climb on R - 098 WRN to 1800FT. Turn right to WN754.							
DF	WN754	-	-	-	Right	-	-
TF	WN757	-	271°(276.9°T)	12.0	Right	220-	3000-
TF	EMPED MAHF	-	001°(006.7°T)	5.0	-	220-	4000+

Holding

P/T	WPT ID	Flyover	Track MAG (GEO)	DIST NM	Turn Direction	Speed KT	ALT FT
HM	EMPED	Yes	091°(096.6°T)	1 min	Right	-	4000+

See page LBWN AD 2 - 61.1 for waypoint coordinates