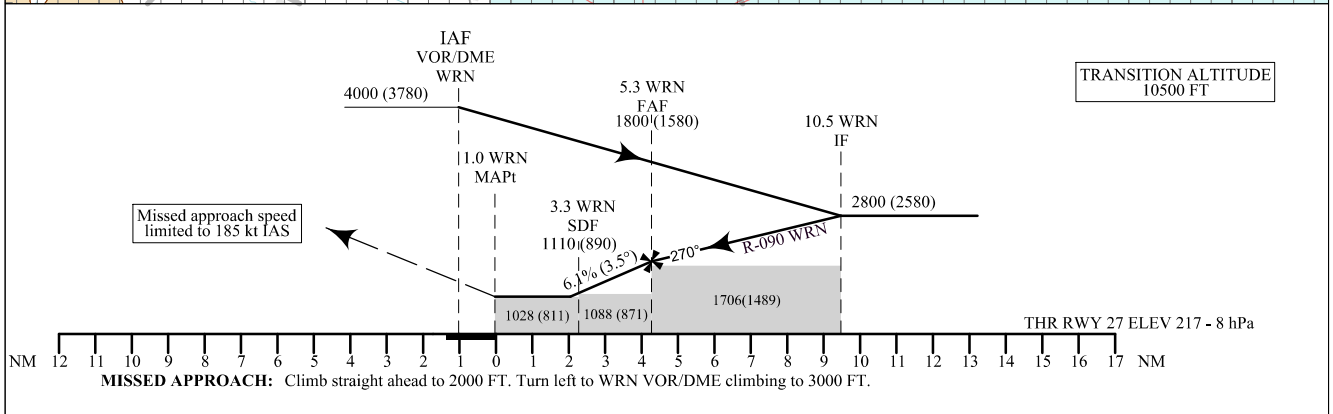
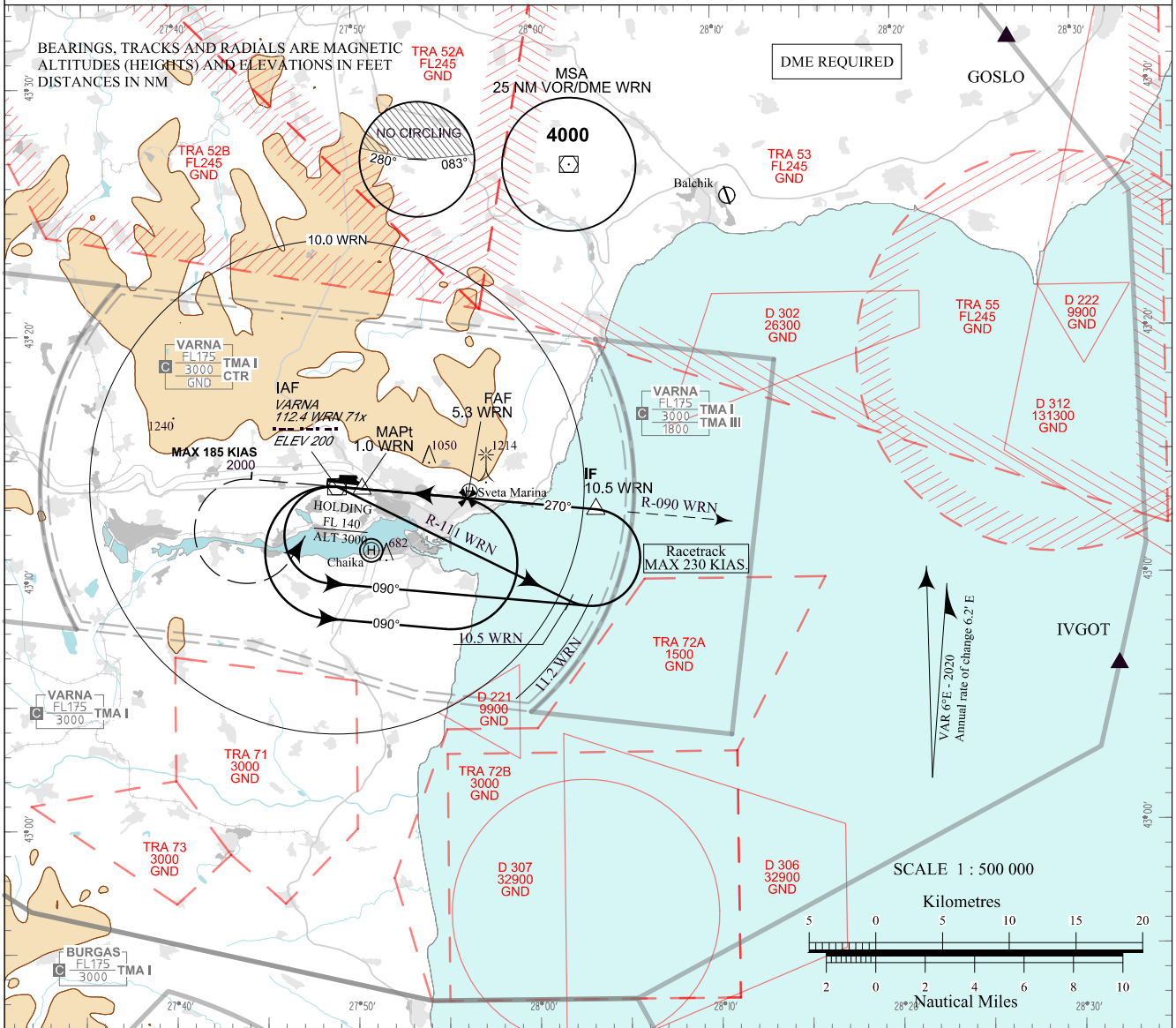


**INSTRUMENT
APPROACH
CHART - ICAO**

AERODROME ELEV 230 - 9 hPa APP 124.600 TWR 119.500 ATIS 126.880
THR RWY 27 ELEV 217 - 8 hPa 130.450 118.900
233.250 296.725
OCH RELATED TO THR RWY 27 ELEV 121.500 121.500
CIRCLING OCH RELATED TO AD ELEV 243.000 243.000

**VARNA
VOR
RWY 27**



OCA (OCH)	A	B	C	D
Straight-in Approach	m	315 (250)		
	ft	1030 (820)		
SDF not received	m	340 (275)		
	ft	1110 (900)		
Circling	m	215 (145)	275 (205)	350 (280)
	ft	700 (470)	900 (670)	1150 (920)

CIRCLING SOUTH OF AD ONLY

DME WRN NM / km	5 / 9.3	4 / 7.4
DIST THR NM / km	4 / 7.4	3 / 5.6
ALT (HGT) m	535 (470)	420 (355)
ALT (HGT) ft	1750 (1540)	1380 (1170)

GS	kt	60	80	100	120	140	160	180
FAF - MAPt 4.3 NM	min:sec	4:18	3:14	2:35	2:09	1:51	1:37	1:26
Rate of descent	ft/min	371	494	618	741	865	988	1112

Timing is not authorized for defining MAPt

See page LBWN AD 2 - 61.1 for non-RNAV fixes coordinates and other data.