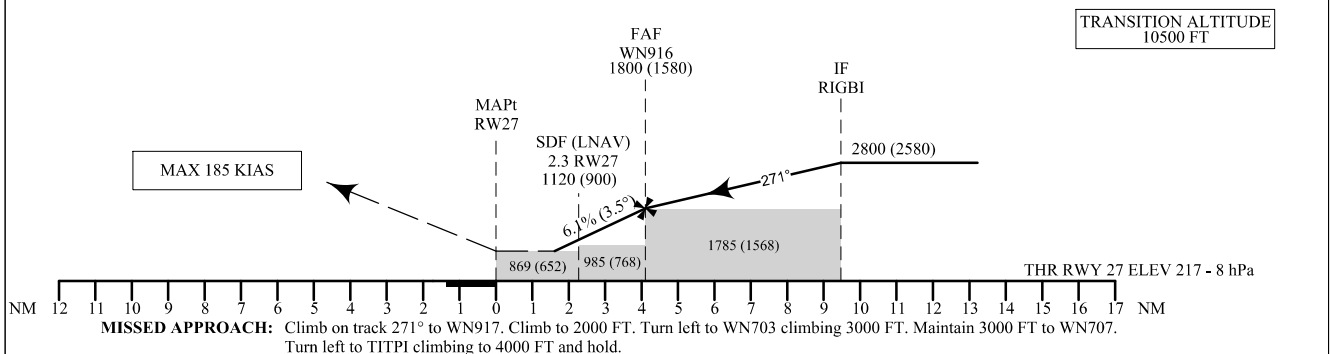
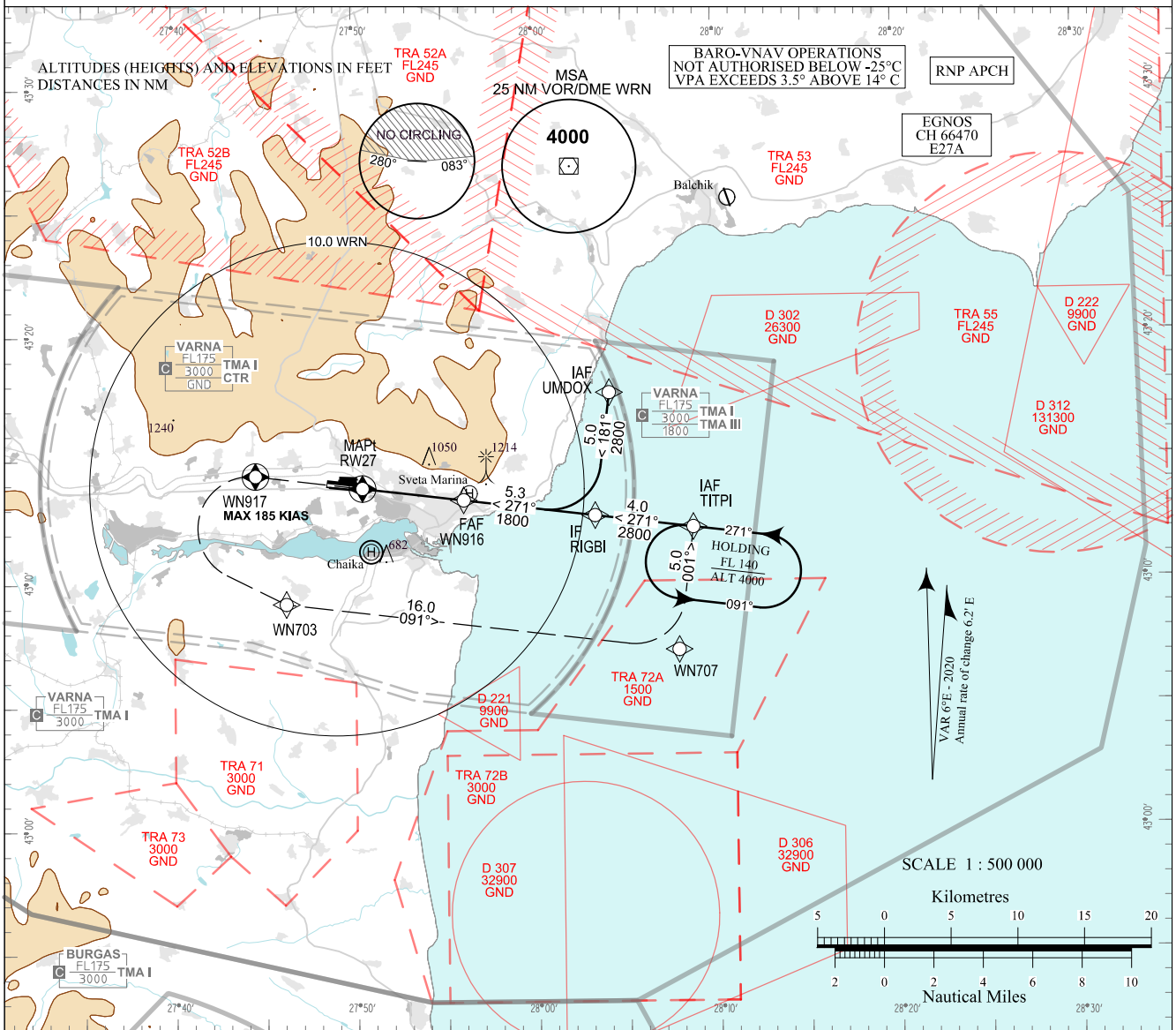


**INSTRUMENT  
APPROACH  
CHART - ICAO**

AERODROME ELEV 230 - 9 hPa      APP 124.600      TWR 119.500      ATIS 126.880  
THR RWY 27 ELEV 217 - 8 hPa      130.450      118.900  
233.250      296.725  
OCH RELATED TO THR RWY 27 ELEV      121.500      121.500  
CIRCLING OCH RELATED TO AD ELEV      243.000      243.000

**VARNA  
RNP  
RWY 27**



OCA (OCH)		A	B	C	D
LPV	m	160 (94)	164 (98)	167 (101)	171 (105)
	ft	523 (306)	537 (320)	546 (329)	559 (342)
LNAV/VNAV	m	250 (185)	255 (190)	260 (195)	265 (195)
	ft	820 (610)	840 (620)	850 (630)	860 (640)
LNAV	m	265 (200)			
	ft	870 (660)			
Circling	m	215 (145)	275 (205)	350 (280)	400 (330)
	ft	700 (470)	900 (670)	1150 (920)	1300 (1070)

DIST THR NM / km	4 / 7.4	3 / 5.6	2 / 3.7
ALT (HGT) m	535 (470)	425 (360)	310 (245)
ALT (HGT) ft	1760 (1550)	1390 (1180)	1020 (800)

GS	kt	60	80	100	120	140	160	180
FAF - MAPt 4.1 NM	min:sec	4:06	3:04	2:28	2:03	1:45	1:32	1:22
Rate of descent	ft/min	371	494	618	741	865	988	1112

CIRCLING SOUTH OF AD ONLY

Timing is not authorized for defining MAPt

Instrument approach procedures

P/T	WPT ID	Flyover	Track MAG (GEO)	DIST NM	Turn Direction	Speed KT	ALT FT
<b>From IAF UMDOX</b>							
IF	UMDOX/ IAF	-	-	-	-	220-	4000+
TF	RIGBI / IF	-	181°(187.2°T)	5.0	Right	190-	2800+
TF	WN916 / FAF	-	271°(277.0°T)	5.3	-	-	1800+
TF	RW27 / MAPt	Yes	271°(277.0°T)	4.1	-	-	-
CF	WN917	Yes	271°(277.0°T)	-	-	-	-
CA	-	-	271°(277.0°T)	-	Left	185-	2000+
DF	WN703	-	-	-	Left	-	-
TF	WN707	-	091°(096.9°T)	16.0	Left	220-	3000-
TF	TITPI	-	001°(007.1°T)	5.0	-	220-	4000+
<b>From IAF TITPI</b>							
IF	TITPI / IAF	-	-	-	-	220-	4000+
TF	RIGBI / IF	-	271°(277.2°T)	4.0	-	190-	2800+
TF	WN916 / FAF	-	271°(277.0°T)	5.3	-	-	1800+
TF	RW27 / MAPt	Yes	271°(277.0°T)	4.1	-	-	-
CF	WN917	Yes	271°(277.0°T)	-	-	-	-
CA	-	-	271°(277.0°T)	-	Left	185-	2000+
DF	WN703	-	-	-	Left	-	-
TF	WN707	-	091°(096.9°T)	16.0	Left	220-	3000-
TF	TITPI	-	001°(007.1°T)	5.0	-	220-	4000+

Holding

P/T	WPT ID	Flyover	Track MAG (GEO)	DIST NM	Turn Direction	Speed KT	ALT FT
HM	TITPI	Yes	271°(277.2°T)	1 min	Left	-	4000+

See page LBWN AD 2 - 61.1 for waypoint coordinates

SBAS FAS Data Block Varna RNP RWY 27

Data Field	Data Value
Operation Type	0
SBAS Provider	1 (EGNOS)
Airport Identifier	LBWN
Runway	27
Runway Letter	0 (None)
Approach Performance Designator	0
Route Indicator	
Reference Path Data Selector	0
Reference Path Identifier	E27A
LTP/FTP Latitude	431350.0925N
LTP/FTP Longitude	0275026.3990E
LTP/FTP Ellipsoidal Height (m)	102.9
FPAP Latitude	431359.9430N
Delta FPAP Latitude (seconds)	9.8505
FPAP Longitude	0274835.6670E
Delta FPAP Longitude (seconds)	-110.7320
Threshold Crossing Height (ft)	50.0
TCH Units Selector	0 (feet)
Glidepath Angle (degrees)	3.50
Course Width (m)	105.00
Length Offset (m)	0
HAL (m)	40.0
VAL (m)	50.0
CRC Value	E7 8B C3 EF
Data Block Hexadecimal Representation	10 0E 17 02 0C 1B 00 00 01 37 32 05 19 74 8D 12 BE AA F2 0B 05 18 F5 4C 00 E8 9E FC F4 01 5E 01 64 00 C8 FA E7 8B C3 EF

Required Additional Data (not CRC wrapped)

Data Field	Data Value
ICAO Code	LB
LTP/FTP Orthometric Height (m)	66.2

**INTENTIONALLY LEFT BLANK**