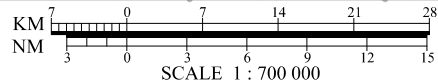
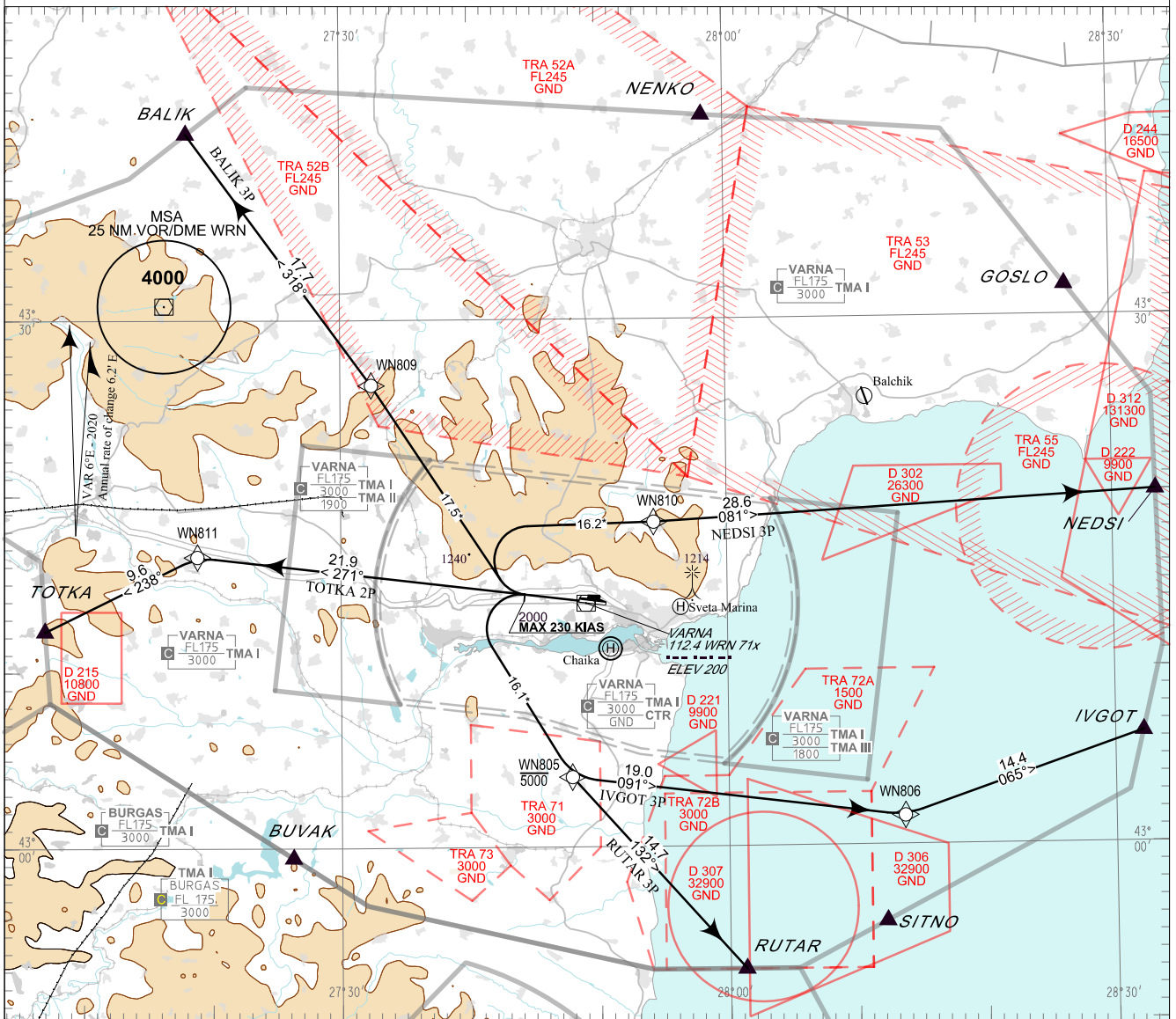


**STANDARD DEPARTURE CHART -  
INSTRUMENT (SID) - ICAO**

TRANSITION ALT 10500 FT APP 124.600 TWR 119.500 ATIS 126.880  
TRANSITION LEVEL BY ATC 130.450 118.900  
233.250 296.725  
121.500 121.500  
243.000 243.000

**VARNA**  
**RNAV Rwy 27**  
BALIK 3P, IVGOT 3P, NEDSI 3P,  
RUTAR 3P, TOTKA 2P



ALTITUDES (HEIGHTS) AND ELEVATIONS IN FEET  
DISTANCES IN NM  
\* Distances marked by \* are approximate distances from DER

**PBN**  
RNAV 1

**Critical DME**  
EMO, VRB on IVGOT 3P, NEDSI 3P, RUTAR 3P  
EMO on BALIK 3P, TOTKA 2P

**Non RNAV 1 ACFT:**  
Report "UNABLE RNAV" at first contact to ATC.  
Expect OMNIDIRECTIONAL DEPARTURE and/ or  
vectoring to be provided by ATC

**OMNIDIRECTIONAL DEPARTURE:**  
Climb straight ahead to 2000 FT. Climb on track 257° to  
4000 FT.  
Turn to the corresponding point or as cleared by ATC  
MNM climb gradient of 5% (304 FT/NM) to 4000 FT

**AFTER TAKE-OFF:**  
Immediately contact VARNA APP.

Strict compliance with departure procedures is necessary. If  
unable to comply inform ATC in good time so that alternative  
clearance can be issued.

**WARNING:**  
When given a clearance to a level higher than the specified in  
the SID, follow published SID profile, unless restrictions are  
explicitly cancelled by ATC.

| P/T   | WPT ID | Flyover | Track<br>MAG (GEO) | DIST<br>NM | Turn<br>Direction | Speed<br>KT | ALT<br>FT | Additional<br>Requirements |
|---|--------|---------|--------------------|------------|-------------------|-------------|-----------|----------------------------|
| <b>BALIK 3P</b><br>BALIK THREE PAPA DEPARTURE                 |        |         |                    |            |                   |             |           |                            |
| <i>MNM climb gradient of 5.0% (304 FT/NM) to 4000FT AMSL.</i> |        |         |                    |            |                   |             |           |                            |
| CA  | -      | -       | 271°(276.9°T)      | -          | Right             | 230-        | 2000+     | -                          |
| DF  | WN809  | -       | -                  | -          | -                 | -           | -         | -                          |
| TF  | BALIK  | -       | 318°(323.8°T)      | 17.7       | -                 | -           | -         | -                          |
| <b>IVGOT 3P</b><br>IVGOT THREE PAPA DEPARTURE                 |        |         |                    |            |                   |             |           |                            |
| <i>MNM climb gradient of 5.0% (304 FT/NM) to 4000FT AMSL.</i> |        |         |                    |            |                   |             |           |                            |
| CA  | -      | -       | 271°(276.9°T)      | -          | Left              | 230-        | 2000+     | -                          |
| DF  | WN805  | -       | -                  | -          | Left              | -           | 5000-     | -                          |
| TF  | WN806  | -       | 091°(096.9°T)      | 19.0       | Left              | -           | -         | -                          |
| TF  | IVGOT  | -       | 065°(071.0°T)      | 14.4       | -                 | -           | -         | -                          |
| <b>NEDSI 3P</b><br>NEDSI THREE PAPA DEPARTURE                 |        |         |                    |            |                   |             |           |                            |
| <i>MNM climb gradient of 5.0% (304 FT/NM) to 4000FT AMSL.</i> |        |         |                    |            |                   |             |           |                            |
| CA  | -      | -       | 271°(276.9°T)      | -          | Right             | 230-        | 2000+     | -                          |
| DF  | WN810  | -       | -                  | -          | -                 | -           | -         | -                          |
| TF  | NEDSI  | -       | 081°(086.6°T)      | 28.6       | -                 | -           | -         | -                          |
| <b>RUTAR 3P</b><br>RUTAR THREE PAPA DEPARTURE                 |        |         |                    |            |                   |             |           |                            |
| <i>MNM climb gradient of 5.0% (304 FT/NM) to 4000FT AMSL.</i> |        |         |                    |            |                   |             |           |                            |
| CA  | -      | -       | 271°(276.9°T)      | -          | Left              | 230-        | 2000+     | -                          |
| DF  | WN805  | -       | -                  | -          | -                 | -           | 5000-     | -                          |
| TF  | RUTAR  | -       | 132°(138.1°T)      | 14.7       | -                 | -           | -         | -                          |
| <b>TOTKA 2P</b><br>TOTKA TWO PAPA DEPARTURE                   |        |         |                    |            |                   |             |           |                            |
| <i>MNM climb gradient of 5.0% (304 FT/NM) to 4000FT AMSL.</i> |        |         |                    |            |                   |             |           |                            |
| CF  | WN811  | -       | 271°(276.9°T)      | 21.9       | Left              | -           | -         | -                          |
| TF  | TOTKA  | -       | 238°(244.0°T)      | 9.6        | -                 | -           | -         | -                          |

See page LBWN AD 2 - 61.1 for waypoint coordinates