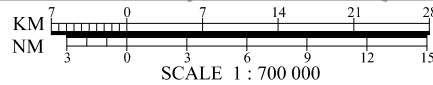
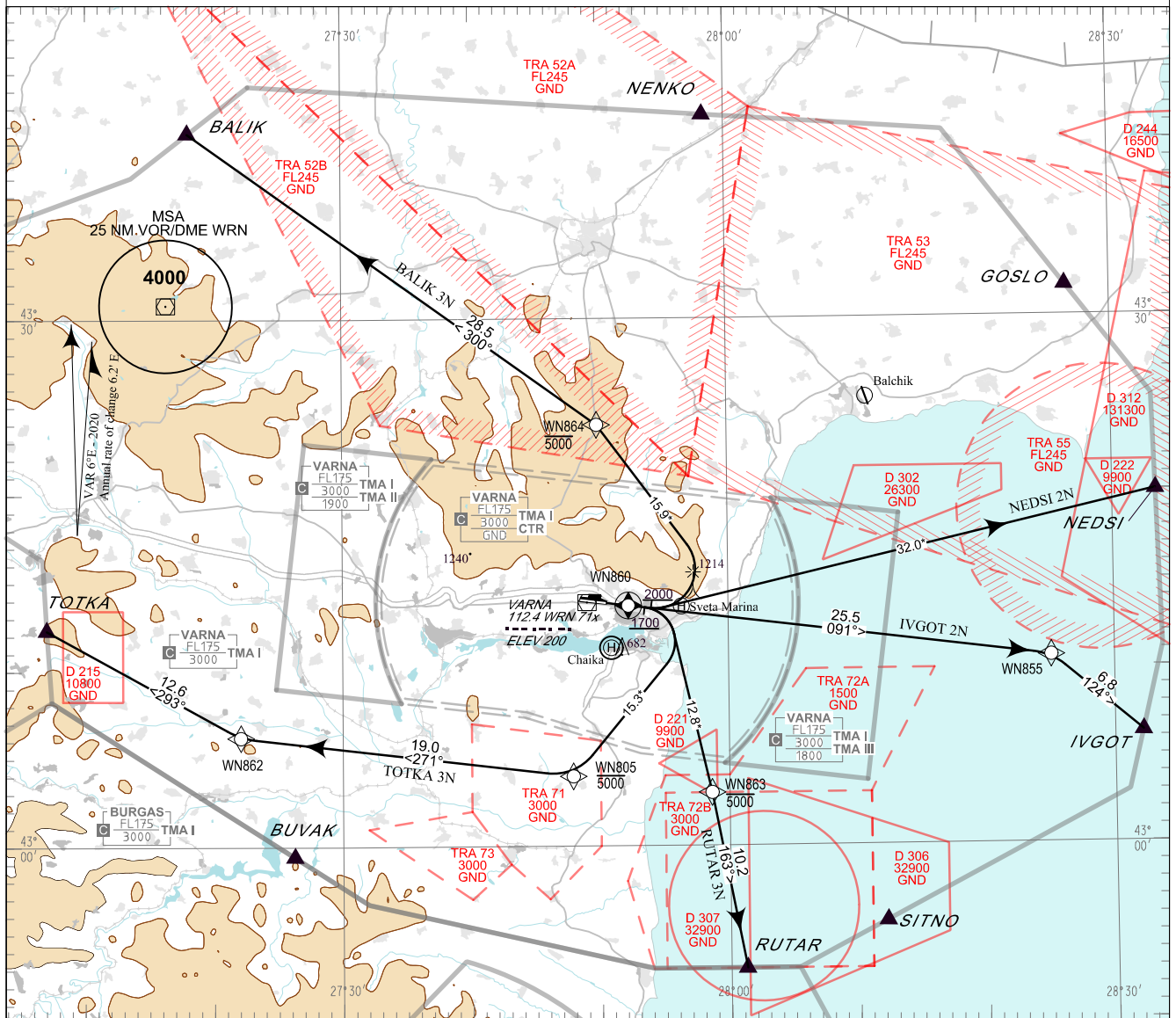


**STANDARD DEPARTURE CHART -
INSTRUMENT (SID) - ICAO**

TRANSITION ALT 10500 FT APP 124.600 TWR 119.500 ATIS 126.880
TRANSITION LEVEL BY ATC 130.450 118.900
233.250 296.725
121.500 121.500
243.000 243.000

**VARNA
RNAV Rwy 09**
BALIK 3N, IVGOT 2N,
NEDSI 2N, RUTAR 3N, TOTKA 3N



ALTITUDES (HEIGHTS) AND ELEVATIONS IN FEET
DISTANCES IN NM
* Distances marked by * are approximate distances from DER

PBN

RNAV 1
GNSS or DME/DME/IRU required.

Critical DME

EMO, VRB on BALIK 3N, TOTKA 3N
EMO, CND on NEDSI 2N
EMO on IVGOT 2N, RUTAR 3N

Non RNAV 1 ACFT:

Report "UNABLE RNAV" at first contact to ATC.
Expect OMNIDIRECTIONAL DEPARTURE and/or
vectoring to be provided by ATC.

OMNIDIRECTIONAL DEPARTURE:

Climb on track 107° to 4000 FT, turn to the corresponding
point or as cleared by ATC
MNM climb gradient of 5% (304 FT/NM) to 4000 FT

AFTER TAKE-OFF:

Immediately contact VARNA APP.

Strict compliance with departure procedures is necessary.
If unable to comply inform ATC in good time so that
alternative clearance can be issued.

WARNING:

When given a clearance to a level higher than the specified in
the SID, follow published SID profile, unless restrictions are
explicitly cancelled by ATC.

P/T	WPT ID	Flyover	Track MAG (GEO)	DIST NM	Turn Direction	Speed KT	ALT FT	Additional Requirements
BALIK 3N BALIK THREE NOVEMBER DEPARTURE								
<i>MNM climb gradient of 5.0% (304 FT/NM) to 4000FT AMSL.</i>								
CA	-	-	091°(096.9°T)	-	Left	230-	2000+	-
DF	WN864	-	-	-	Left	-	5000-	-
TF	BALIK	-	300°(305.8°T)	28.5	-	-	-	-
IVGOT 2N IVGOT TWO NOVEMBER DEPARTURE								
<i>MNM climb gradient of 5.0% (304 FT/NM) to 4000FT AMSL.</i>								
TF	WN855	-	091°(096.9°T)	25.5	Right	-	-	-
TF	IVGOT	-	124°(130.0°T)	6.8	-	-	-	-
NEDSI 2N NEDSI TWO NOVEMBER DEPARTURE								
<i>MNM climb gradient of 5.0% (304 FT/NM) to 4000FT AMSL.</i>								
CA	-	-	091°(096.9°T)	-	Left	230-	1700+	-
DF	NEDSI	-	-	-	-	-	-	-
RUTAR 3N RUTAR THREE NOVEMBER DEPARTURE								
<i>MNM climb gradient of 5.0% (304 FT/NM) to 4000FT AMSL.</i>								
TF	WN860	Yes	091°(096.9°T)	1.3	-	-	-	-
CA	-	-	091°(096.9°T)	-	Right	230-	1700+	-
DF	WN863	-	-	-	-	-	5000-	-
TF	RUTAR	-	163°(169.2°T)	10.2	-	-	-	-
TOTKA 3N TOTKA THREE NOVEMBER DEPARTURE								
<i>MNM climb gradient of 5.0% (304 FT/NM) to 4000FT AMSL.</i>								
TF	WN860	Yes	091°(096.9°T)	1.3	-	-	-	-
CA	-	-	091°(096.9°T)	-	Right	230-	1700+	-
DF	WN805	-	-	-	Right	-	5000-	-
TF	WN862	-	271°(276.9°T)	19.0	Right	-	-	-
TF	TOTKA	-	293°(299.0°T)	12.6	-	-	-	-

See page LBWN AD 2 - 61.1 for waypoint coordinates