

**ATC SURVEILLANCE  
MINIMUM ALTITUDE  
CHART - ICAO**

AERODROME ELEV 230 FT

TRANSITION ALT 10500 FT  
TRANSITION LEVEL BY ATC

APP 124.600 233.250 TWR 119.500 296.725 ATIS 126.880  
130.450 118.900  
121.500 243.000 121.500 243.000

**VARNA**

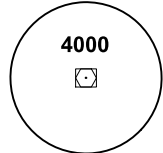
**GENERAL INFORMATION**

1. Only the significant obstacles and dominant spot heights are shown.
2. The minimum altitude shown within the Minimum Vectoring Altitude (MVA) areas and Intermediate Approach Areas (IAA) ensure terrain clearance in conformity with Doc 8168 PANS-OPS, Vol II, Part II, Section 2, Chapter 6 in respect to obstacles within the MVA area and IAA and airspace structure (lower limit of controlled airspace plus buffer of 300 m (1000 ft)).
3. Further descent below MVA may be given within the IAA shown when the aircraft is within 40° leg to final approach track or on final approach track. Below the MVA area or IAA, IFR flights will normally be cleared on published IFR procedures only.
4. Values of altitudes in brackets are corrected for low temperatures and apply always in the period between first AIRAC date in NOVEMBER and last AIRAC date in MARCH, unless published otherwise by a NOTAM.
5. This chart may only be used for cross-checking of altitudes assigned while under radar control.

**OUTSIDE THE DESIGNATED  
MVA AREAS**

The minimum altitude to be allocated by radar controller will be either the MSA or 300 m (1000 ft) above any fixed obstacles within 9.3 km (5 NM) of the aircraft.

MSA  
25 NM VOR/DME WRN

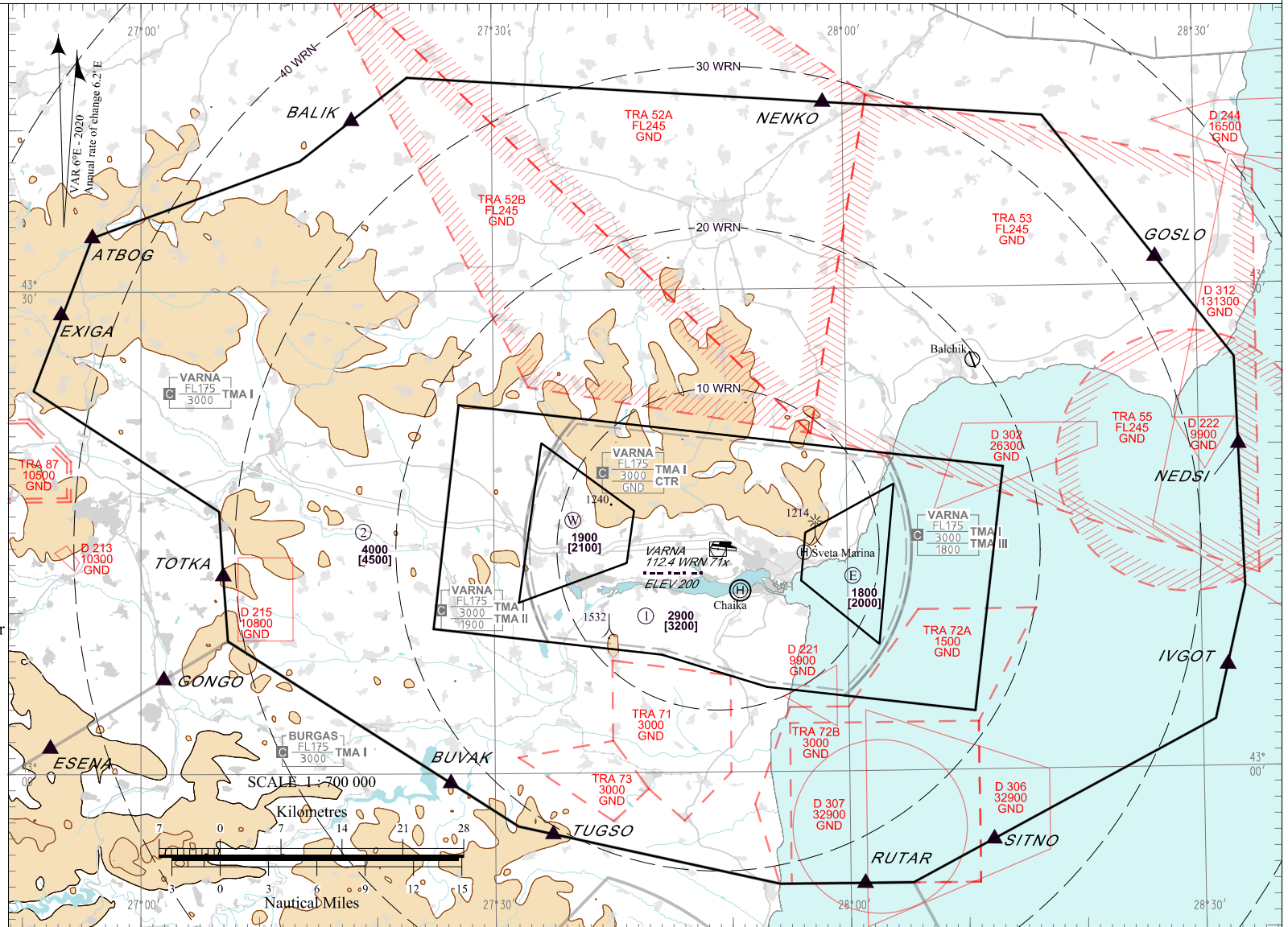


SCALE 1:700 000

Kilometres

Nautical Miles

ALTITUDES AND ELEVATIONS IN FEET  
DISTANCES IN NM



List of Coordinates of MVA Areas in TMA VARNA

- 1 MNM ALT 2900 [3200]**  
432256N 0272703E - 431849N 0281320E -  
430340N 0281043E - 430516N 0275305E -  
430720N 0274410E - 430901N 0272450E -  
432256N 0272703E
- 2 MNM ALT 4000 [4500]**  
434317N 0272246E - 434113N 0280532E -  
434037N 0281703E - 432527N 0283309E -  
431837N 0283327E - 431110N 0283346E -  
430257N 0283105E - 425301N 0280519E -  
425301N 0275402E - 425531N 0273912E -  
425643N 0273159E - 430216N 0272013E -  
430817N 0270723E - 431621N 0270640E -  
432350N 0265052E - 433321N 0265552E -  
433806N 0271335E - 434317N 0272246E

Intermediate Approach Areas

- RWY 09 IAA W MNM ALT 1900 [2100]**  
431038N 0273205E - 431303N 0274115E -  
431618N 0274155E - 432032N 0273404E -  
431038N 0273205E
- RWY 27 IAA E MNM ALT 1800 [2000]**  
431152N 0275603E - 430752N 0280239E -  
431749N 0280400E - 431450N 0275627E -  
431152N 0275603E