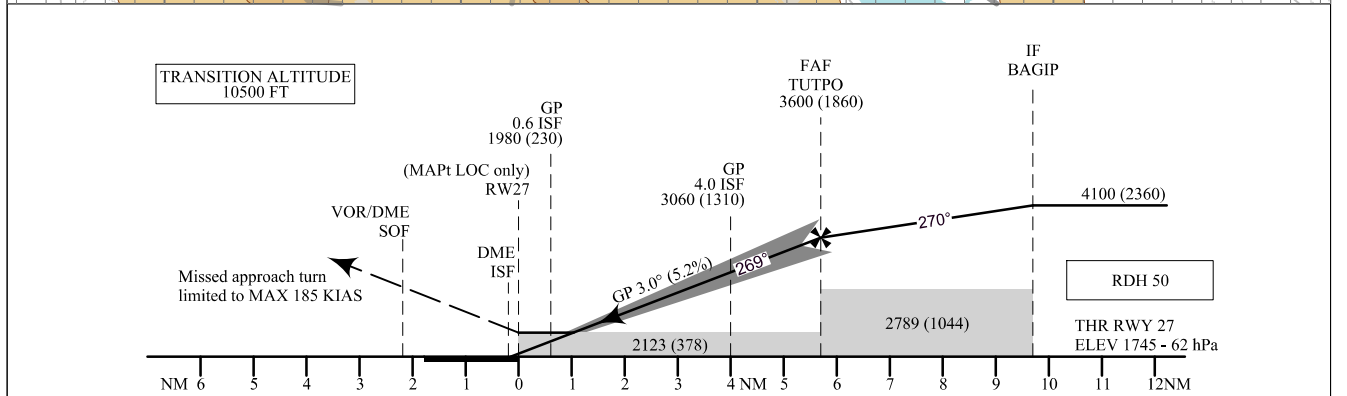
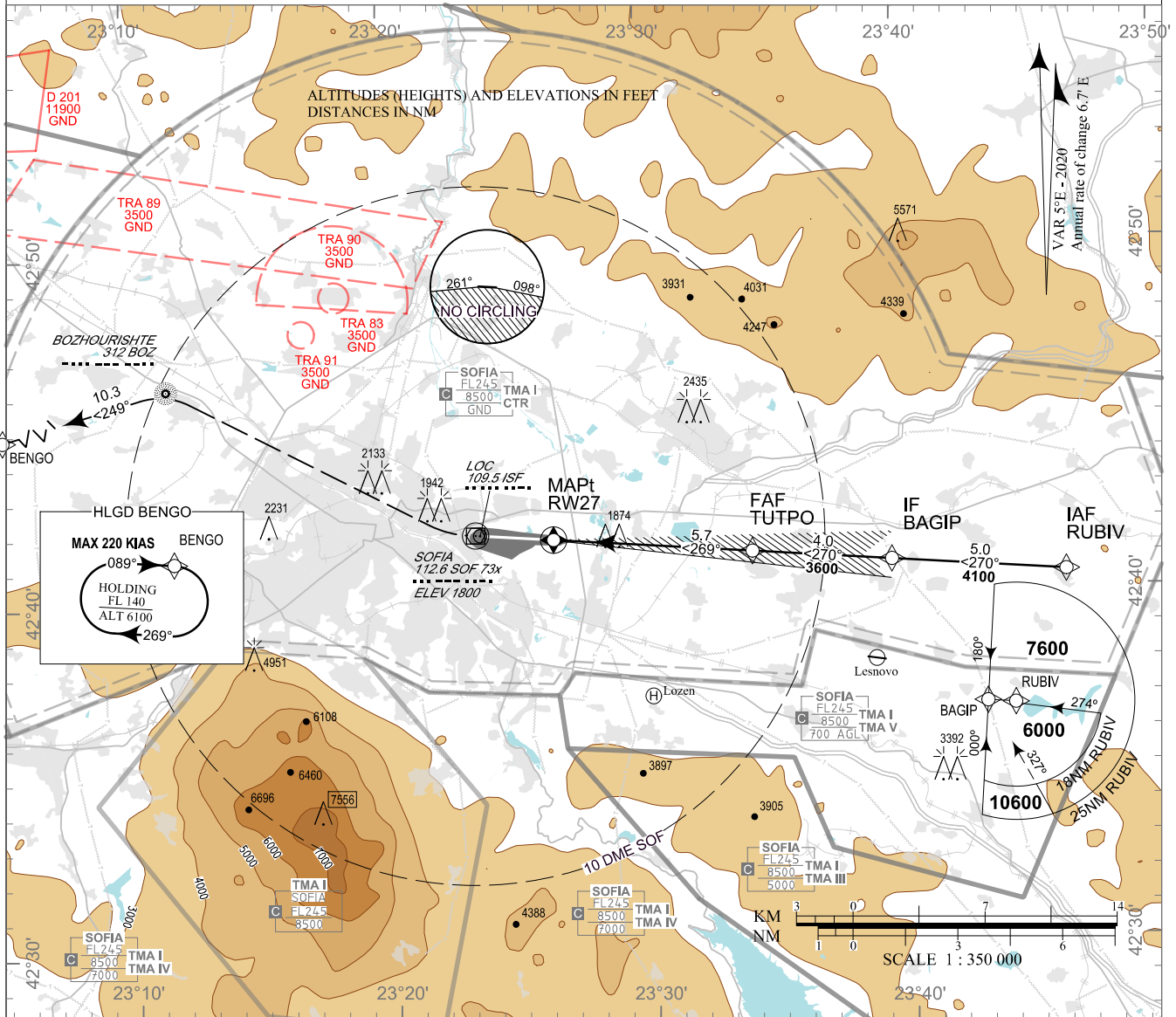


**INSTRUMENT
APPROACH
CHART - ICAO**

AERODROME ELEV 1742 - 62 hPa
THR RWY 27 ELEV 1745 - 62 hPa
ILS AND LOC ONLY OCH RELATED TO THR RWY 27
CIRCLING OCH RELATED TO AD ELEV

APP 123.700 TWR 118.100 ATIS 126.680
129.900 120.200
247.575 336.400
121.500 121.500
243.000 243.000

**SOFIA
ILS z or LOC z
RWY 27**



MISSED APPROACH: Climb to SOF. Turn to BOZ. Turn on 249° to BENG0 climbing to 8000.

OCA (OCH)	A	B	C	D
CAT I	m 578 (46) ft 1896 (151)	m 581 (49) ft 1906 (161)	m 584 (52) ft 1916 (171)	m 587 (55) ft 1926 (181)
CAT II	m 548 (16) ft 1798 (53)	m 553 (21) ft 1814 (69)	m 557 (25) ft 1828 (83)	m 561 (29) ft 1841 (96)
LOC Only	m 650 (120) ft 2130 (390)			
Circling	m 685 (155) ft 2250 (510)	m 700 (170) ft 2290 (550)	m 775 (245) ft 2540 (800)	m 845 (315) ft 2770 (1030)

DME ISF NM / km	5.0 / 9.3	4.0 / 7.4	3.0 / 5.6	2.0 / 3.7
ALT (HGT) m	1030 (500)	930 (400)	835 (305)	740 (205)
ALT (HGT) ft	3380 (1630)	3060 (1310)	2740 (1000)	2420 (680)

DME ISF reads ZERO at THR 27

GS	kt	60	80	100	120	140	160	180
FAF - MAPt 5.7 NM	min:sec	5:42	4:17	3:25	2:51	2:27	2:08	1:54
Rate of descent	ft/min	316	421	527	632	737	843	948

Timing is not authorized for defining MAPt

Instrument approach procedures

P/T	WPT ID	Flyover	Track MAG (GEO)	DIST NM	Turn Direction	Speed KT	ALT FT
From IAF RUBIV							
IF	RUBIV/IAF	-	-	-	-	-	6000+
TF	BAGIP/IF	-	270° (274.8°T)	5.0	-	-	4100+
TF	TUTPO/FAF	-	270° (274.8°T)	4.0	-	-	3600+
TF	RW27/MAPt	Yes	270° (274.8°T)	5.7	-	-	-
DF	SOF	Yes	-	-	-	-	-
DF	BOZ	-	-	-	-	-	-
TF	BENGO	-	249° (254.0°T)	10.3	-	-	8000+

Holding

P/T	WPT ID	Flyover	Track MAG (GEO)	Time	Turn Direction	Speed KT	ALT FT
HM	BENGO	Yes	089° (094.3°T)	1 min	Right	220-	8000+

See page LBSF AD 2 - 61.1 for waypoint coordinates