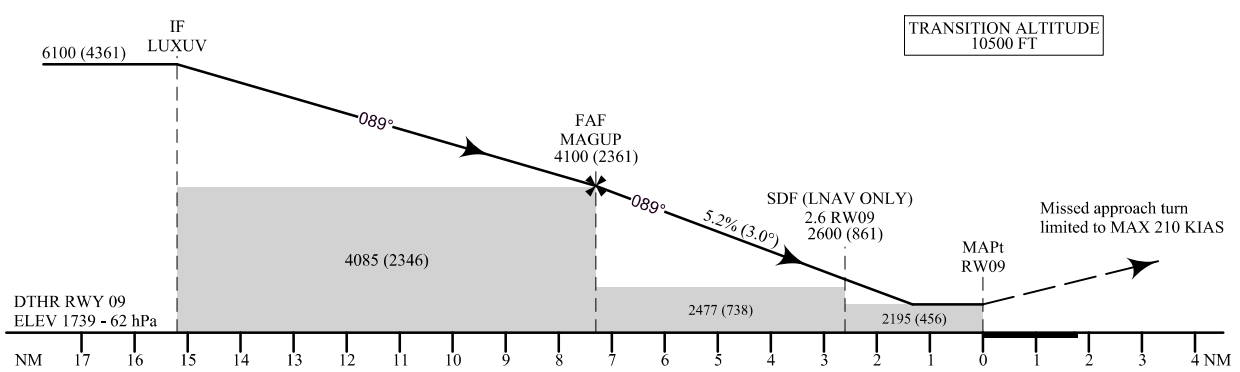
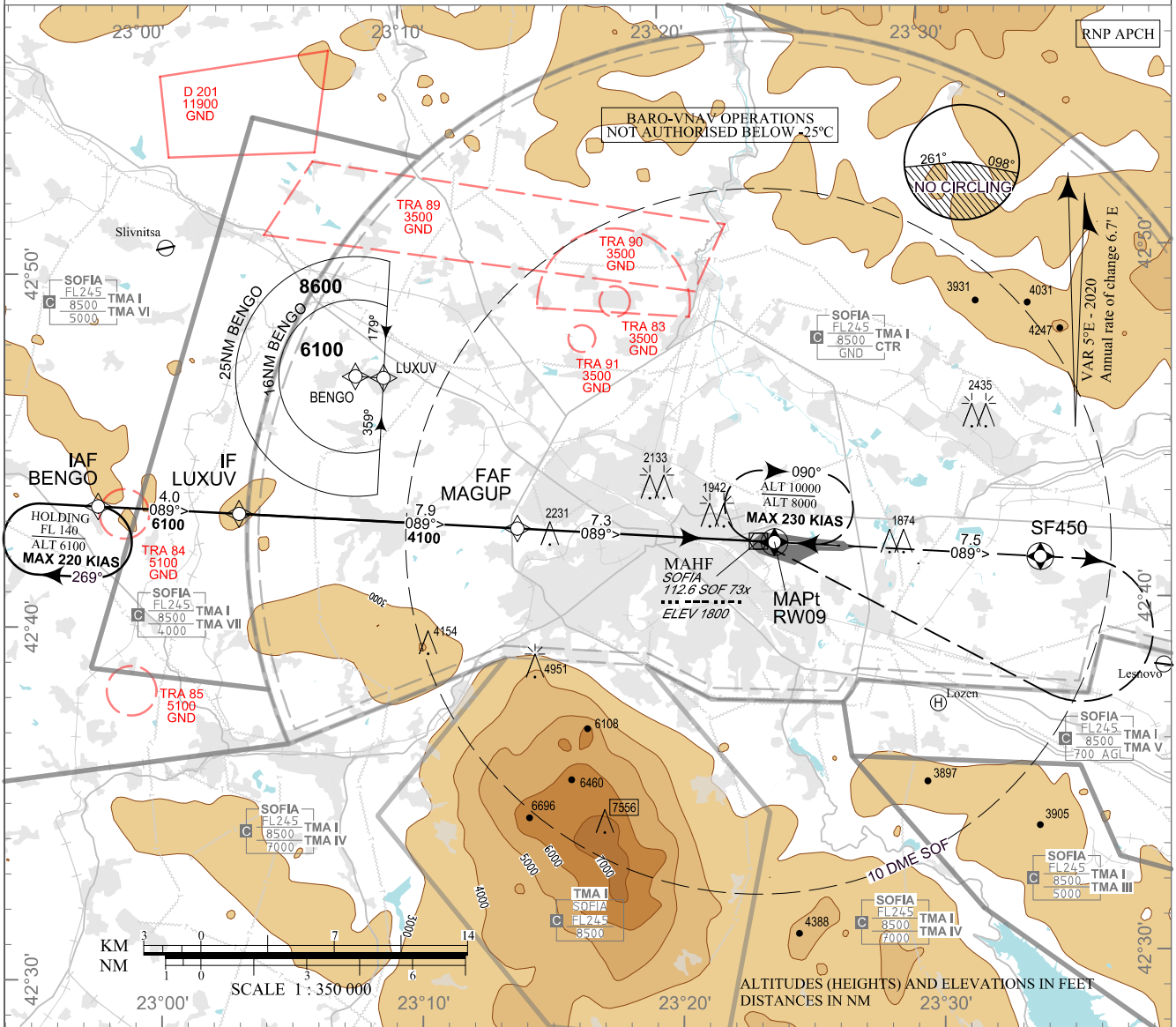


**INSTRUMENT  
APPROACH  
CHART - ICAO**

AERODROME ELEV 1742 - 62 hPa  
DTHR RWY 09 ELEV 1739 - 62 hPa  
LNAV OCH RELATED TO DTHR RWY 09  
CIRCLING OCH RELATED TO AD ELEV

APP 123.700 TWR 118.100 ATIS 126.680  
129.900 120.200  
247.575 336.400  
121.500 121.500  
243.000 243.000

**SOFIA  
RNP  
RWY 09**



**MISSED APPROACH:** Climb to SF450. Climb to 4500. Turn right to SOF and climb 8000 to enter SOF HLDG. Climb 10000 or as directed in SOF HLDG.

OCA (OCH)		A	B	C	D
LNAV/VNAV	m	635 (105)	640 (110)	640 (110)	645 (115)
	ft	2080 (340)	2090 (350)	2100 (360)	2110 (370)
LNAV	m	670 (140)			
	ft	2200 (460)			
Circling	m	685 (155)	700 (170)	775 (245)	845 (315)
	ft	2250 (510)	2290 (550)	2540 (800)	2770 (1030)

DIST THR NM / km	7.0 / 13.0	6.0 / 11.1	5.0 / 9.3	4.0 / 7.4	3.0 / 5.6	2.0 / 3.7
ALT (HGT) m	1220 (690)	1125 (595)	1030 (500)	930 (400)	835 (305)	740 (210)
ALT (HGT) ft	4010 (2270)	3690 (1950)	3370 (1630)	3060 (1320)	2740 (1000)	2430 (690)

GS	kt	60	80	100	120	140	160	180
FAF - MAPt 7.3 NM	min:sec	7:18	5:29	4:23	3:39	3:08	2:44	2:26
Rate of descent	ft/min	316	421	527	632	737	843	948

Timing is not authorized for defining MAPt

**Instrument approach procedures**

P/T	WPT ID	Flyover	Track MAG (GEO)	DIST NM	Turn Direction	Speed KT	ALT FT
<b>From IAF BENG0</b>							
IF	BENG0/IAF	-	-	-	-	-	7000+
TF	LUXUV/IF	-	089° (094.3°T)	4.0	-	-	6100+
TF	MAGUP/FAF	-	089° (094.4°T)	7.9	-	-	4100+
TF	RW09/MAFt	Yes	089° (094.5°T)	7.3	-	-	-
TF	SF450	Yes	089° (094.6°T)	7.5	Right	210-	-
CA	-	-	089° (094.6°T)	-	-	-	4500+
DF	SOF/MAHF	-	-	-	-	-	8000+

**Holding**

P/T	WPT ID	Flyover	Track MAG (GEO)	Time	Turn Direction	Speed KT	ALT FT
HM	BENG0	Yes	089° (094.3°T)	1 min	Right	220-	6100+
HM	SOF	Yes	270° (274.4°T)	1 min	Right	230-	8000+

See page LBSF AD 2 - 61.1 for waypoint coordinates