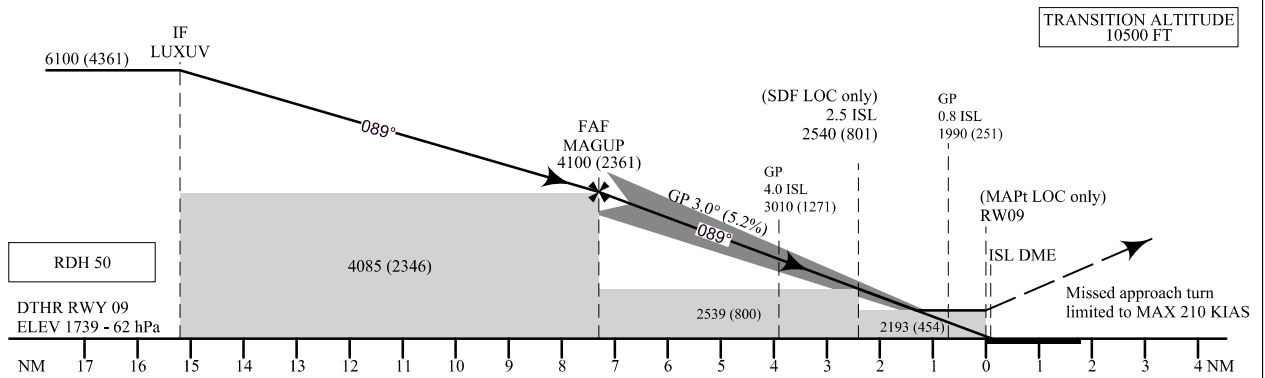
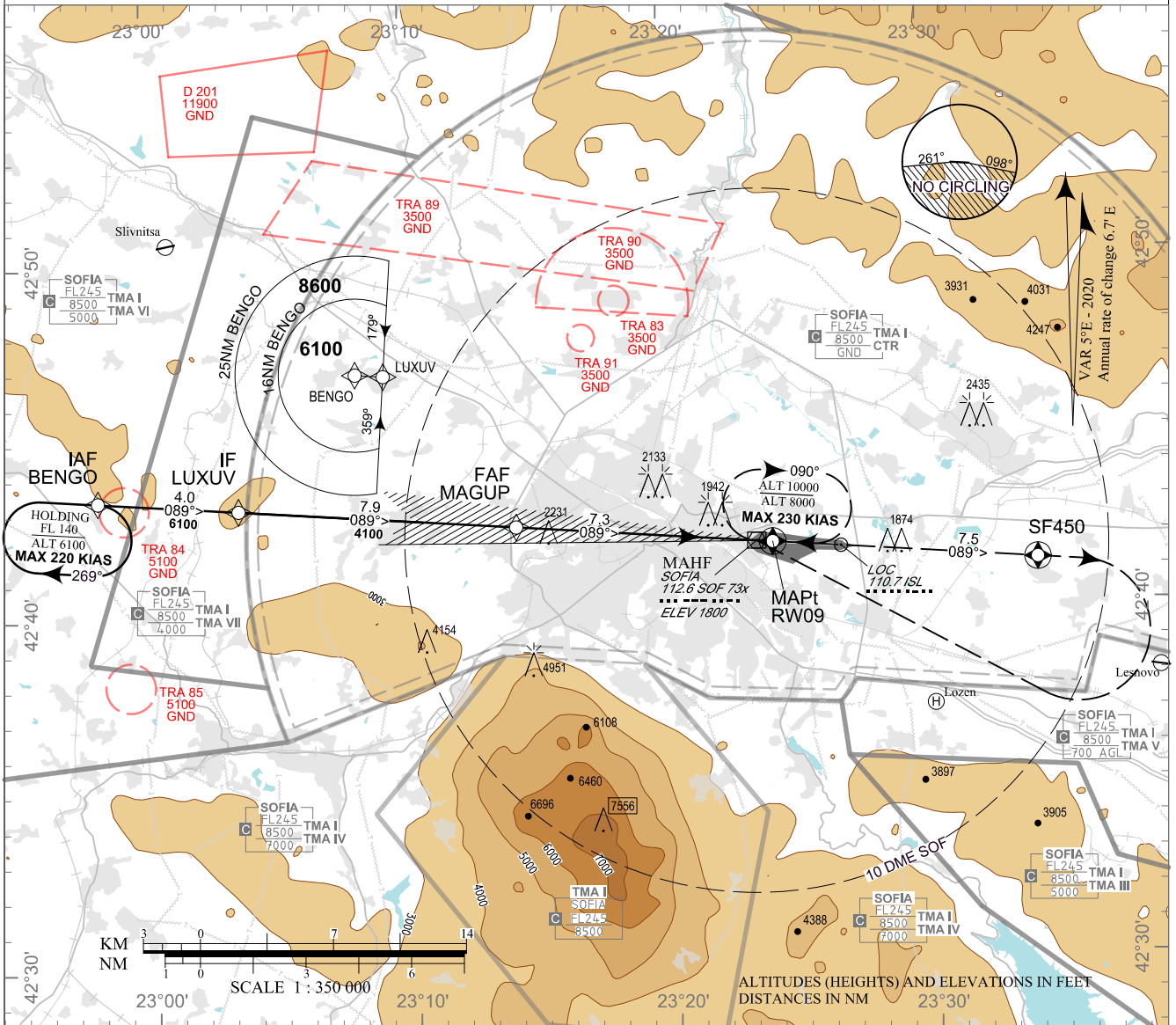


**INSTRUMENT  
APPROACH  
CHART - ICAO**

AERODROME ELEV 1742 - 62 hPa  
DTHR RWY 09 ELEV 1739 - 62 hPa  
ILS AND LOC ONLY OCH RELATED TO DTHR RWY 09  
CIRCLING OCH RELATED TO AD ELEV

APP 123.700 TWR 118.100 ATIS 126.680  
129.900 120.200  
247.575 336.400  
121.500 121.500  
243.000 243.000

**SOFIA  
ILS z or LOC z  
RWY 09**



**MISSED APPROACH:** Climb to SF450. Climb to 4500. Turn right to SOF and climb 8000 to enter SOF HLDG. Climb 10000 or as directed in SOF HLDG.

| OCA (OCH)        | A             | B          | C          | D           |
|------------------|---------------|------------|------------|-------------|
| CAT I            | m 572 (42)    | 575 (45)   | 578 (48)   | 581 (51)    |
|                  | ft 1877 (138) | 1887 (148) | 1897 (158) | 1907 (168)  |
| LOC Only         | m 670 (140)   |            |            |             |
|                  | ft 2200 (460) |            |            |             |
| SDF not received | m 775 (245)   |            |            |             |
|                  | ft 2540 (800) |            |            |             |
| Circling         | m 685 (155)   | 700 (170)  | 775 (245)  | 845 (315)   |
|                  | ft 2250 (510) | 2290 (550) | 2540 (800) | 2770 (1030) |

| DME ISL NM / km  | 7 / 13.0    | 6 / 11.1    | 5 / 9.3     | 4 / 7.4     | 3 / 5.6    | 2 / 3.7    |
|------------------|-------------|-------------|-------------|-------------|------------|------------|
| DIST THR NM / km | 6.8 / 12.6  | 5.8 / 10.8  | 4.8 / 8.9   | 3.8 / 7.1   | 2.8 / 5.2  | 1.8 / 3.4  |
| ALT (HGT) m      | 1210 (680)  | 1110 (580)  | 1015 (485)  | 920 (390)   | 820 (290)  | 725 (195)  |
| ALT (HGT) ft     | 3960 (2220) | 3640 (1910) | 3330 (1590) | 3010 (1270) | 2690 (950) | 2370 (630) |

| GS                | kt      | 60   | 80   | 100  | 120  | 140  | 160  | 180  |
|-------------------|---------|------|------|------|------|------|------|------|
| FAF - MAPt 7.3 NM | min:sec | 7:18 | 5:29 | 4:23 | 3:39 | 3:08 | 2:44 | 2:26 |
| Rate of descent   | ft/min  | 316  | 421  | 527  | 632  | 737  | 843  | 948  |

Timing is not authorized for defining MAPt

**Instrument approach procedures**

| P/T                   | WPT ID    | Flyover | Track<br>MAG (GEO) | DIST<br>NM | Turn<br>Direction | Speed<br>KT | ALT<br>FT |
|-----------------------|-----------|---------|--------------------|------------|-------------------|-------------|-----------|
| <b>From IAF BENG0</b> |           |         |                    |            |                   |             |           |
| IF                    | BENG0/IAF | -       | -                  | -          | -                 | -           | 7000+     |
| TF                    | LUXUV/IF  | -       | 089° (094.3°T)     | 4.0        | -                 | -           | 6100+     |
| TF                    | MAGUP/FAF | -       | 089° (094.4°T)     | 7.9        | -                 | -           | 4100+     |
| TF                    | RW09/MAPt | Yes     | 089° (094.5°T)     | 7.3        | -                 | -           | -         |
| TF                    | SF450     | Yes     | 089° (094.6°T)     | 7.5        | Right             | 210-        | -         |
| CA                    | -         | -       | 089° (094.6°T)     | -          | -                 | -           | 4500+     |
| DF                    | SOF/MAHF  | -       | -                  | -          | -                 | -           | 8000+     |

**Holding**

| P/T | WPT ID | Flyover | Track<br>MAG (GEO) | Time  | Turn<br>Direction | Speed<br>KT | ALT<br>FT |
|-----|--------|---------|--------------------|-------|-------------------|-------------|-----------|
| HM  | BENG0  | Yes     | 089° (094.3°T)     | 1 min | Right             | 220-        | 6100+     |
| HM  | SOF    | Yes     | 270° (274.4°T)     | 1 min | Right             | 230-        | 8000+     |

See page LBSF AD 2 - 61.1 for waypoint coordinates