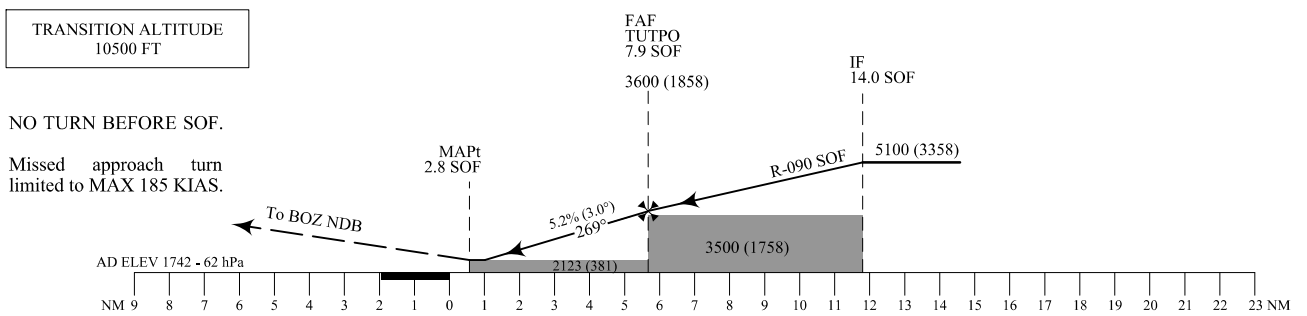
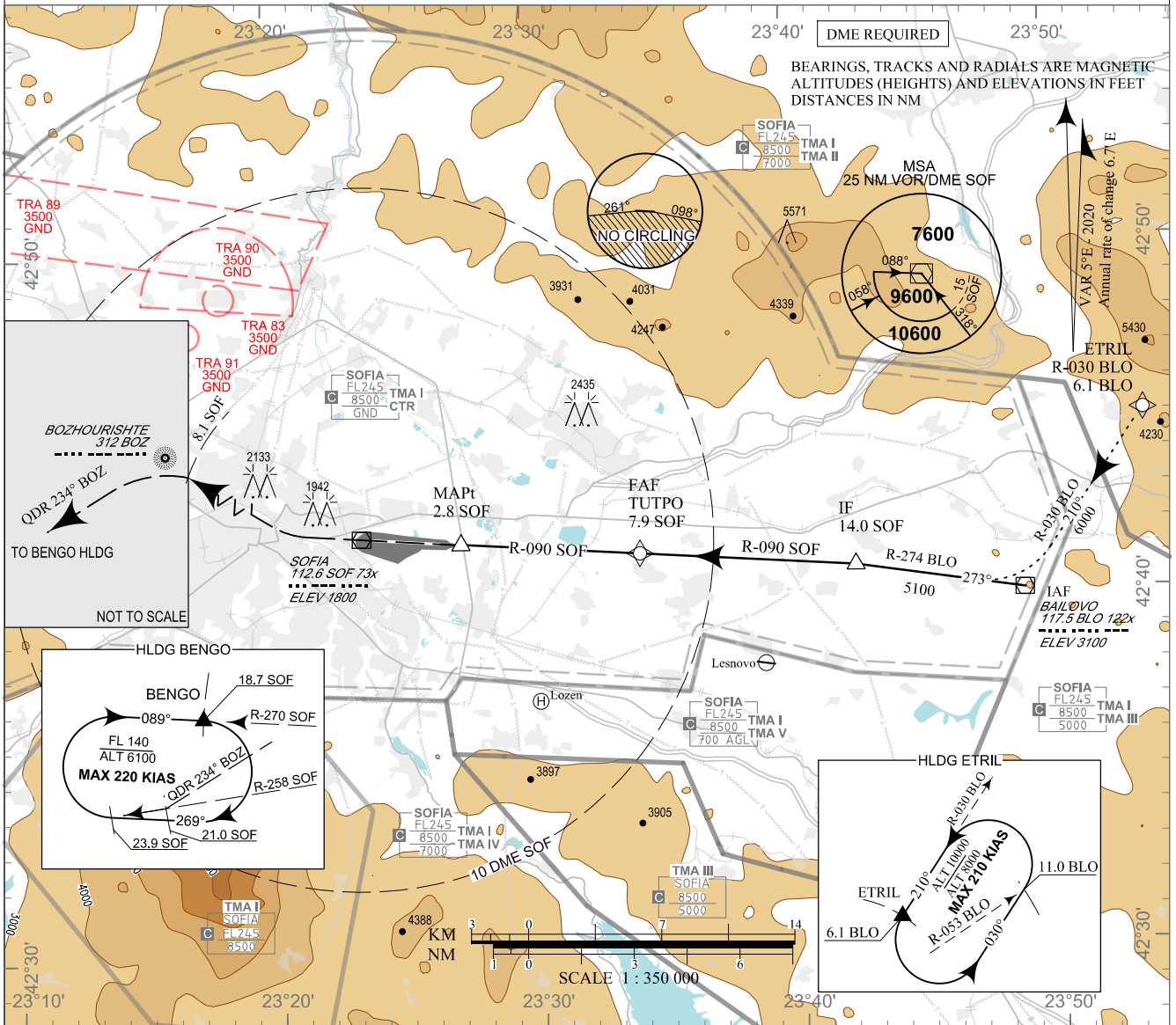


INSTRUMENT
APPROACH
CHART - ICAO

AERODROME ELEV 1742 - 62 hPa
THR RWY 27 ELEV 1745 - 62 hPa
OCH RELATED TO AD ELEV

APP 123.700 TWR 118.100 ATIS 126.680
129.900 120.200
247.575 336.400
121.500 121.500
243.000 243.000

SOFIA
VOR
RWY 27



MISSED APPROACH: Climb straight ahead to SOF or 2300 (555) FT whichever is later, turn right and climb to BOZ.
At 8.1 SOF turn left to intercept QDR 234° BOZ.
At 21.0 SOF turn right to intercept R-258 SOF to enter BENG0 HLDG at the secondary fix in climbing 8000 (6255) FT.

OCA (OCH)	A	B	C	D
Straight-in	m	650 (120)		
Approach	ft	2130 (390)		
Circling	m	685 (155)	700 (170)	775 (245)
	ft	2250 (510)	2290 (550)	2540 (800)

DME SOF NM / km	7.0 / 13.0	6.0 / 11.1	5.0 / 9.3	4.0 / 7.4
DIST THR NM / km	4.8 / 8.8	3.8 / 7.0	2.8 / 5.1	1.8 / 3.3
ALT (HGT) m	1010 (480)	910 (380)	815 (285)	720 (185)
ALT (HGT) ft	3300 (1570)	2990 (1250)	2670 (930)	2350 (610)

GS	kt	60	80	100	120	140	160	180
FAF - MAPt 5.1 NM	min:sec	5:05	3:49	3:03	2:33	2:11	1:55	1:42
Rate of descent	ft/min	318	425	531	637	743	849	955

Timing is not authorized for defining MAPt

See page LBSF AD 2 - 61.2 for non-RNAV fixes coordinates and other data.