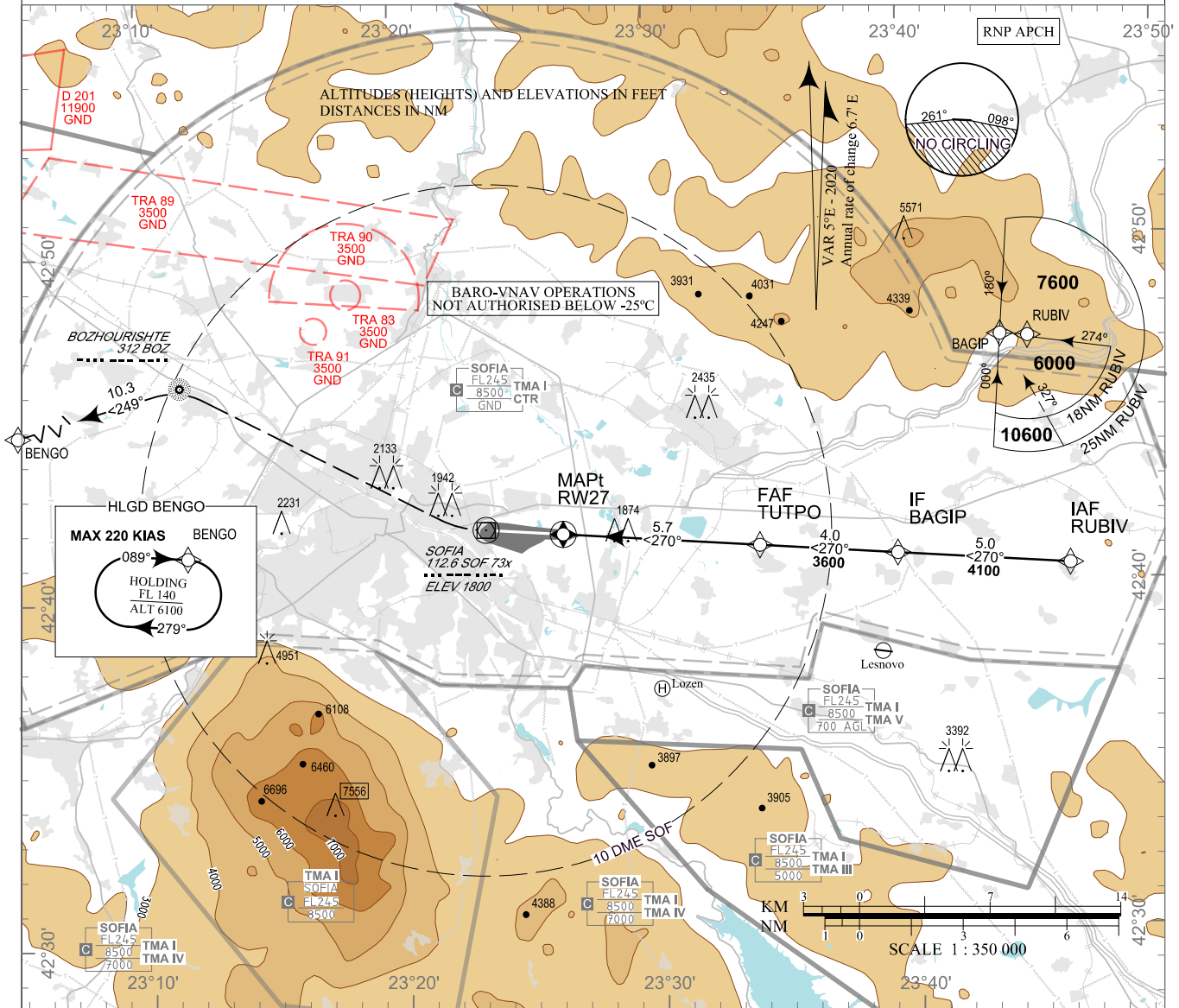


**INSTRUMENT
APPROACH
CHART - ICAO**

AERODROME ELEV 1742 - 62 hPa
THR RWY 27 ELEV 1745 - 62 hPa
LNAV OCH RELATED TO THR RWY 27
CIRCLING OCH RELATED TO AD ELEV

APP 123.700 TWR 118.100 ATIS 126.680
129.900 120.200
247.575 336.400
121.500 121.500
243.000 243.000

**SOFIA
RNP
RWY 27**



Instrument approach procedures

P/T	WPT ID	Flyover	Track MAG (GEO)	DIST NM	Turn Direction	Speed KT	ALT FT
From IAF RUBIV							
IF	RUBIV/IAF	-	-	-	-	-	6000+
TF	BAGIP/IF	-	270° (274.8°T)	5.0	-	-	4100+
TF	TUTPO/FAF	-	270° (274.8°T)	4.0	-	-	3600+
TF	RW27/MAPt	Yes	270° (274.8°T)	5.7	-	-	-
DF	SOF	Yes	-	-	-	-	-
DF	BOZ	-	-	-	-	-	-
TF	BENGO	-	249° (254.0°T)	10.3	-	-	8000+

Holding

P/T	WPT ID	Flyover	Track MAG (GEO)	Time	Turn Direction	Speed KT	ALT FT
HM	BENGO	Yes	089° (094.3°T)	1 min	Right	220-	8000+

See page LBSF AD 2 - 61.1 for waypoint coordinates