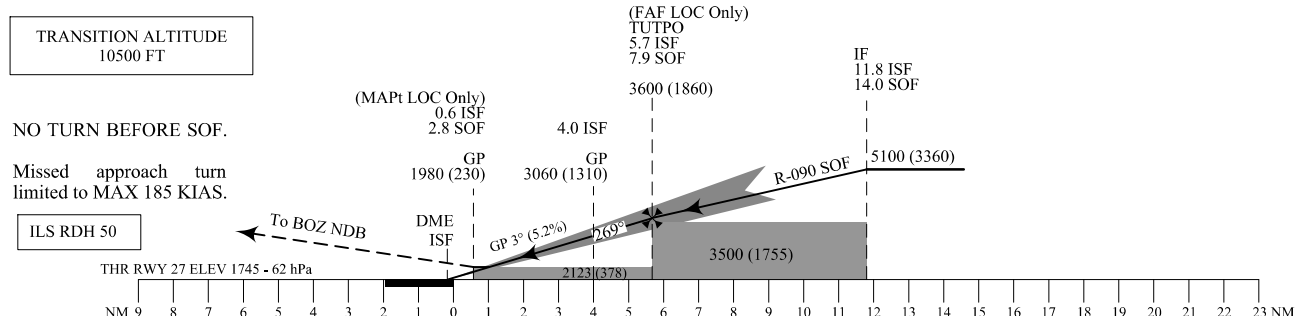
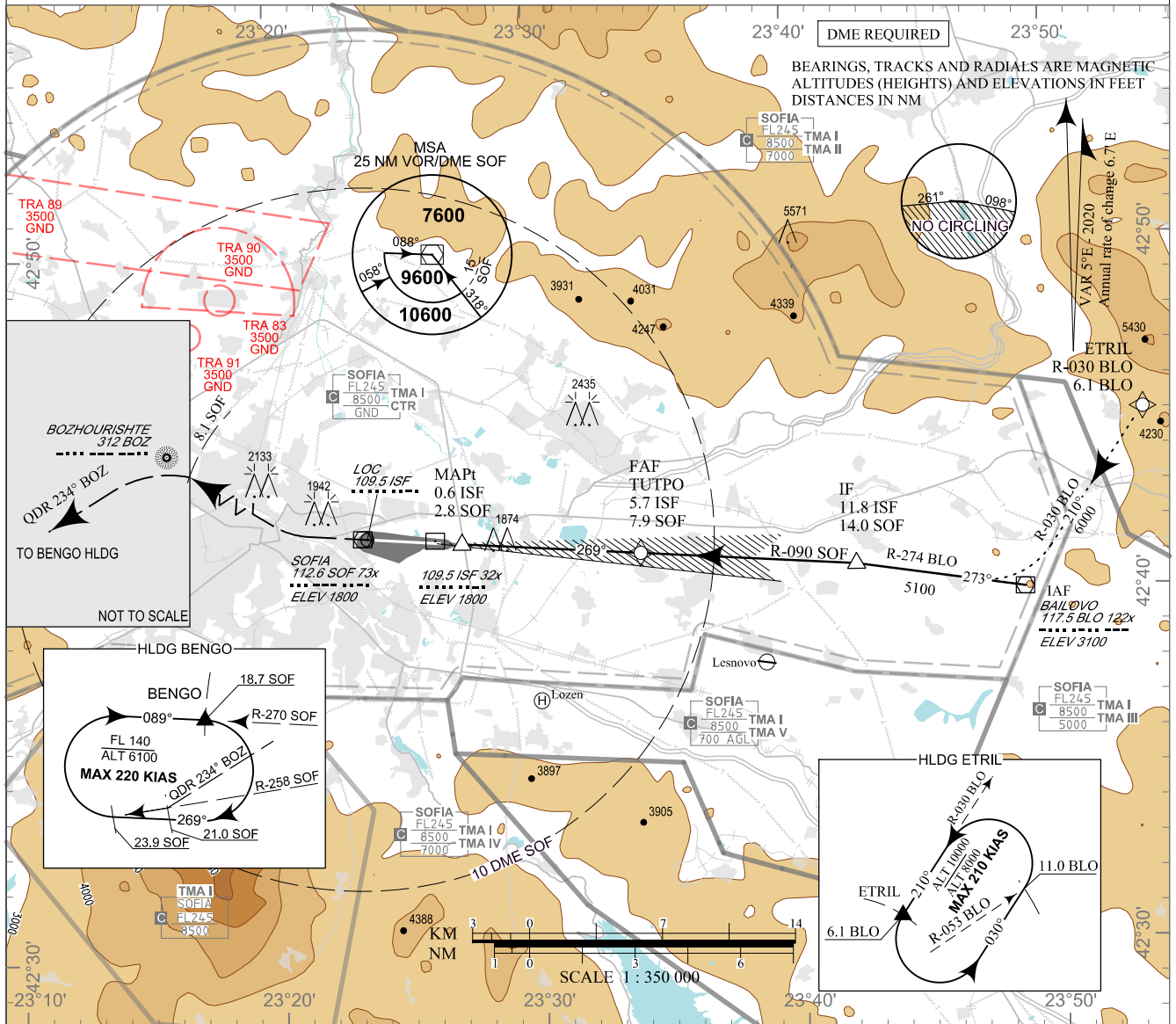


**INSTRUMENT  
APPROACH  
CHART - ICAO**

AERODROME ELEV 1742 - 62 hPa  
THR RWY 27 ELEV 1745 - 62 hPa  
ILS AND LOC ONLY OCH RELATED TO THR RWY 27  
CIRCLING OCH RELATED TO AD ELEV

APP 123.700 TWR 118.100 ATIS 126.680  
129.900 120.200  
247.575 336.400  
121.500 121.500  
243.000 243.000

**SOFIA  
ILS y or LOC y  
RWY 27**



**MISSED APPROACH:** Climb straight ahead to SOF or 2300 (555) FT whichever is later, turn right and climb to BOZ.  
At 8.1 SOF turn left to intercept QDR 234° BOZ.  
At 21.0 SOF turn right to intercept R-258 SOF to enter BENG0 HLDG at the secondary fix in climbing 8000 (6255) FT.

OCA (OCH)	A	B	C	D	
CAT I	m	578 (46)	581 (49)	584 (52)	587 (55)
	ft	1896 (151)	1906 (161)	1916 (171)	1926 (181)
CAT II	m	548 (16)	553 (21)	557 (25)	561 (29)
	ft	1798 (53)	1814 (69)	1828 (83)	1841 (96)
LOC Only	m	650 (120)			
	ft	2130 (390)			
Circling	m	685 (155)	700 (170)	775 (245)	845 (315)
	ft	2250 (510)	2290 (550)	2540 (800)	2770 (1030)

DME ISF NM / km	5.0 / 9.3	4.0 / 7.4	3.0 / 5.6	2.0 / 3.7
DME SOF NM / km	7.2 / 13.4	6.2 / 11.5	5.2 / 9.7	4.2 / 7.8
ALT (HGT) m	1030 (500)	930 (400)	835 (305)	740 (205)
ALT (HGT) ft	3380 (1630)	3060 (1310)	2740 (1000)	2420 (680)

DME ISF reads ZERO at THR 27

GS	kt	60	80	100	120	140	160	180
FAF - MAPt 5.1 NM	min:sec	5:06	3:49	3:04	2:33	2:11	1:55	1:42
Rate of descent	ft/min	318	425	531	637	743	849	955

Timing is not authorized for defining MAPt

See page LBSF AD 2 - 61.2 for non-RNAV fixes coordinates and other data.