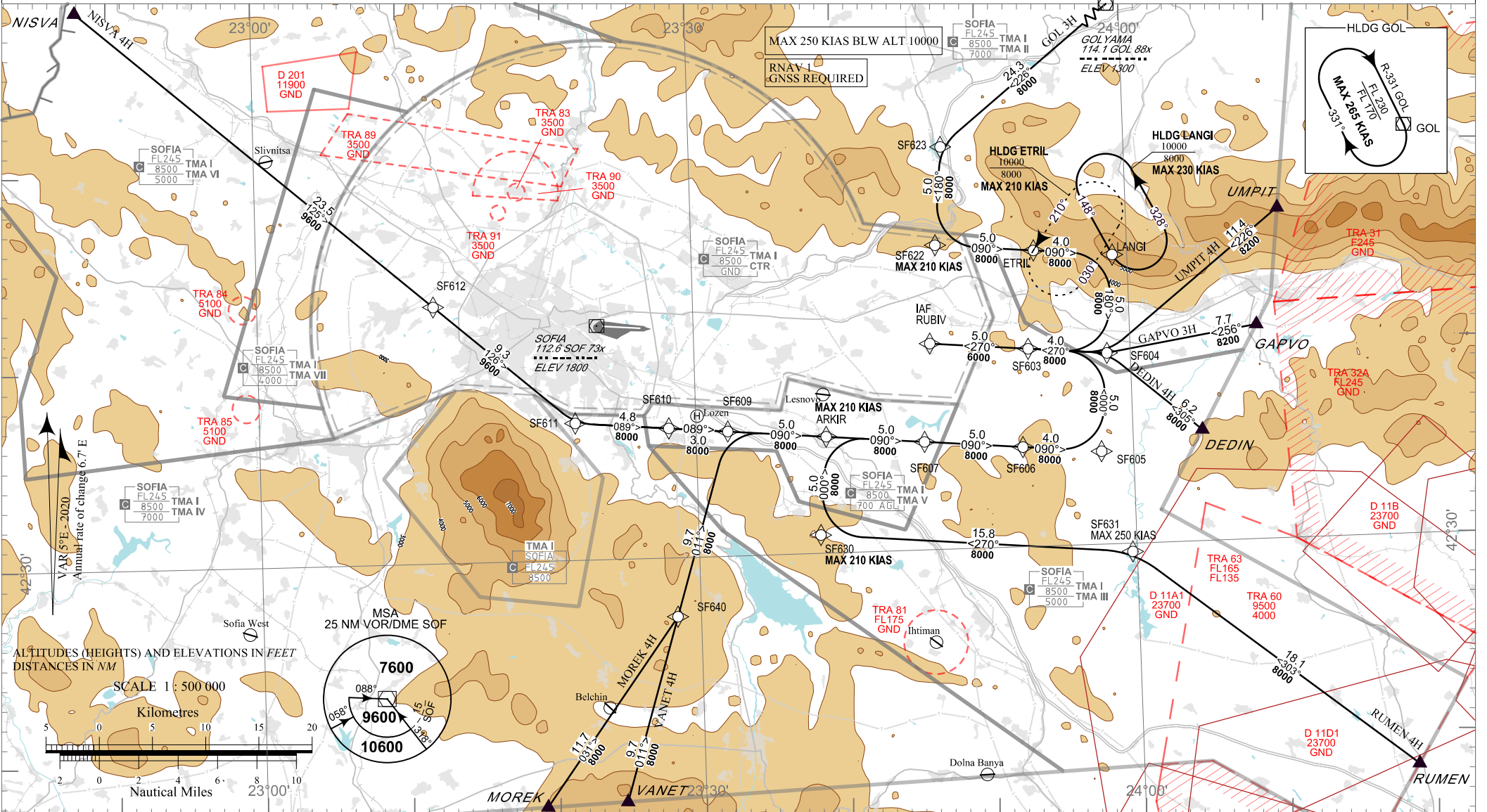


**STANDARD ARRIVAL CHART -
INSTRUMENT (STAR) - ICAO**

TRANSITION ALT 10500 FT
TRANSITION LEVEL BY ATC

APP 123.700 247.575 TWR 118.100 336.400 ATIS 126.680
129.900 243.000 120.200
121.500 243.000 121.500 243.000

SOFIA
RNAV RWY 27
DEDIN 4H, GAPVO 3H, GOL 3H, MOREK 4H, NISVA 4H, RUMEN 4H, UMPIT 4H, VANET 4H



P/T	WPT ID	Flyover	Track MAG (GEO)	DIST NM	Turn Direction	Speed KT	ALT FT	Additional Requirements
NISVA 4H NISVA FOUR HOTEL ARRIVAL								
IF	NISVA	-	-	-	-	-	-	-
TF	SF612	-	125°(130.4°T)	23.5	-	-	-	-
TF	SF611	-	126°(130.7°T)	9.3	Left	-	9600+	-
TF	SF610	-	089°(094.6°T)	4.8	-	-	-	-
TF	SF609	-	089°(094.7°T)	3.0	-	-	-	-
TF	ARKIR	-	090°(094.8°T)	5.0	-	210-	-	-
TF	SF607	-	090°(094.8°T)	5.0	-	-	-	-
TF	SF606	-	090°(094.9°T)	5.0	-	-	-	-
TF	SF605	-	090°(095.0°T)	4.0	Left	-	-	-
TF	SF604	-	000°(005.0°T)	5.0	Left	-	-	-
TF	SF603	-	270°(275.0°T)	4.0	-	-	8000+	-
TF	RUBIV/IAF	-	270°(275.0°T)	5.0	-	-	6000+	-
MOREK 4H MOREK FOUR HOTEL ARRIVAL								
IF	MOREK	-	-	-	-	-	-	-
TF	SF640	-	031°(035.8°T)	11.7	Left	-	-	-
TF	SF609	-	011°(016.7°T)	9.7	Right	-	-	-
TF	ARKIR	-	090°(094.8°T)	5.0	-	210-	-	-
TF	SF607	-	090°(094.8°T)	5.0	-	-	-	-
TF	SF606	-	090°(094.9°T)	5.0	-	-	-	-
TF	SF605	-	090°(095.0°T)	4.0	Left	-	-	-
TF	SF604	-	000°(005.0°T)	5.0	Left	-	-	-
TF	SF603	-	270°(275.0°T)	4.0	-	-	8000+	-
TF	RUBIV/IAF	-	270°(275.0°T)	5.0	-	-	6000+	-

P/T	WPT ID	Flyover	Track MAG (GEO)	DIST NM	Turn Direction	Speed KT	ALT FT	Additional Requirements
VANET 4H VANET FOUR HOTEL ARRIVAL								
IF	VANET	-	-	-	-	-	-	-
TF	SF640	-	011°(016.7°T)	9.7	-	-	-	-
TF	SF609	-	011°(016.7°T)	9.7	Right	-	-	-
TF	ARKIR	-	090°(094.8°T)	5.0	-	210-	-	-
TF	SF607	-	090°(094.8°T)	5.0	-	-	-	-
TF	SF606	-	090°(094.9°T)	5.0	-	-	-	-
TF	SF605	-	090°(095.0°T)	4.0	Left	-	-	-
TF	SF604	-	000°(005.0°T)	5.0	Left	-	-	-
TF	SF603	-	270°(275.0°T)	4.0	-	-	8000+	-
TF	RUBIV/IAF	-	270°(275.0°T)	5.0	-	-	6000+	-
RUMEN 4H RUMEN FOUR HOTEL ARRIVAL								
IF	RUMEN	-	-	-	-	-	-	-
TF	SF631	-	303°(308.7°T)	18.1	Left	250-	-	-
TF	SF630	-	270°(275.0°T)	15.8	Right	210-	-	-
TF	ARKIR	-	000°(004.8°T)	5.0	Right	-	-	-
TF	SF607	-	090°(094.8°T)	5.0	-	-	-	-
TF	SF606	-	090°(094.9°T)	5.0	-	-	-	-
TF	SF605	-	090°(095.0°T)	4.0	Left	-	-	-
TF	SF604	-	000°(005.0°T)	5.0	Left	-	-	-
TF	SF603	-	270°(275.0°T)	4.0	-	-	8000+	-
TF	RUBIV/IAF	-	270°(275.0°T)	5.0	-	-	6000+	-

P/T	WPT ID	Flyover	Track MAG (GEO)	DIST NM	Turn Direction	Speed KT	ALT FT	Additional Requirements
DEDIN 4H DEDIN FOUR HOTEL ARRIVAL								
IF	DEDIN	-	-	-	-	-	-	-
TF	SF604	-	305°(310.8°T)	6.2	Left	-	-	-
TF	SF603	-	270°(275.0°T)	4.0	-	-	8000+	-
TF	RUBIV/IAF	-	270°(275.0°T)	5.0	-	-	6000+	-
GAPVO 3H GAPVO THREE HOTEL ARRIVAL								
IF	GAPVO	-	-	-	-	-	-	-
TF	SF604	-	256°(261.1°T)	7.7	Right	-	8200+	-
TF	SF603	-	270°(275.0°T)	4.0	-	-	8000+	-
TF	RUBIV/IAF	-	270°(275.0°T)	5.0	-	-	6000+	-
UMPIT 4H UMPIT FOUR HOTEL ARRIVAL								
IF	UMPIT	-	-	-	-	-	-	-
TF	SF604	-	226°(231.5°T)	11.4	Right	-	8200+	-
TF	SF603	-	270°(275.0°T)	4.0	-	-	8000+	-
TF	RUBIV/IAF	-	270°(275.0°T)	5.0	-	-	6000+	-
GOL 3H GOLYAMA THREE HOTEL ARRIVAL								
IF	GOL	-	-	-	-	-	-	-
TF	SF623	-	226°(231.3°T)	24.3	Left	-	-	-
TF	SF622	-	180°(184.9°T)	5.0	Left	210-	-	-
TF	ETRIL	-	090°(094.9°T)	5.0	-	-	-	-
TF	LANGI	-	090°(095.0°T)	4.0	Right	-	-	-
TF	SF604	-	180°(185.0°T)	5.0	Right	-	-	-
TF	SF603	-	270°(275.0°T)	4.0	-	-	8000+	-
TF	RUBIV/IAF	-	270°(275.0°T)	5.0	-	-	6000+	-

See page LBSF AD 2 - 61.1 for waypoint coordinates