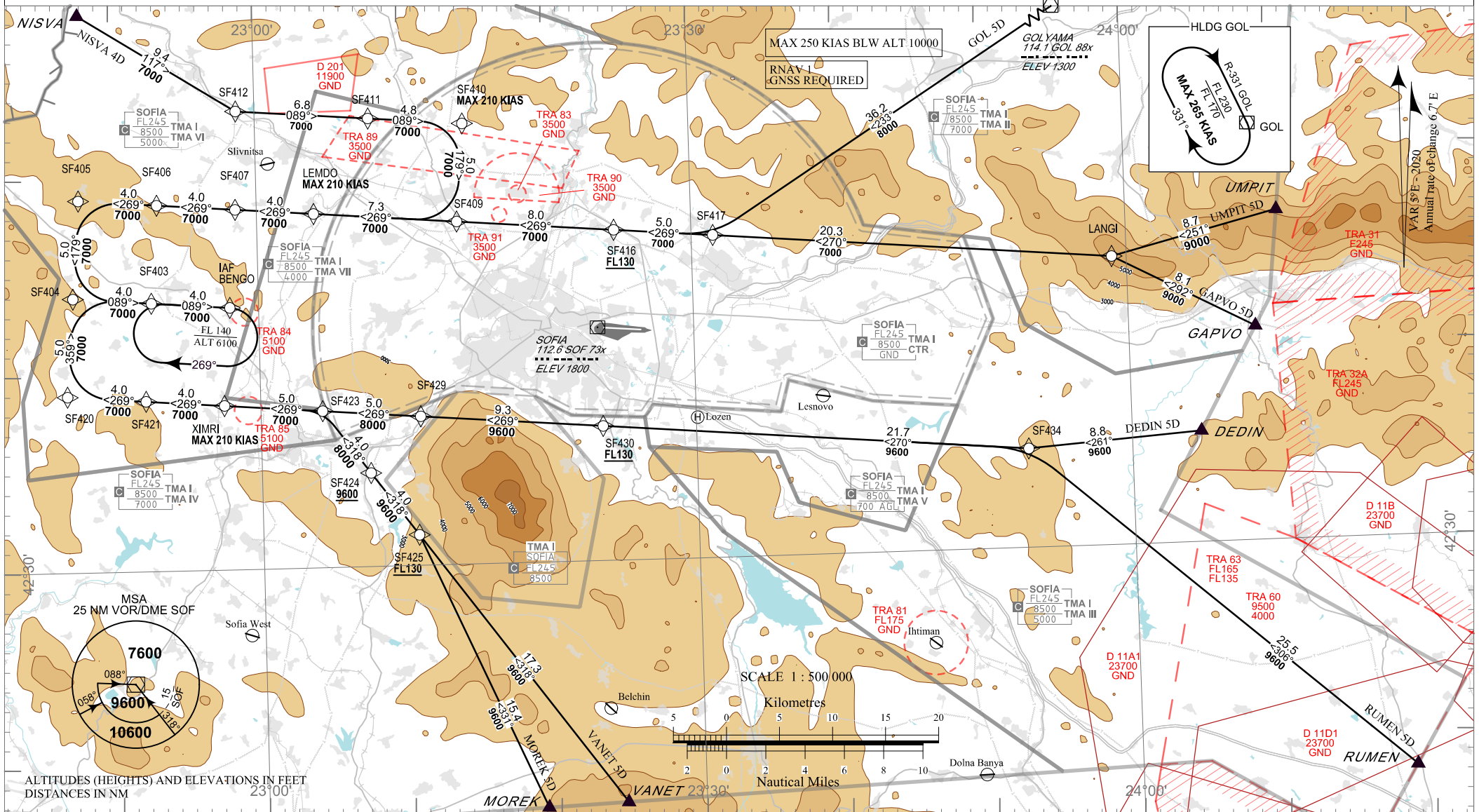


STANDARD ARRIVAL CHART -  
INSTRUMENT (STAR) - ICAO

TRANSITION ALT 10500 FT  
TRANSITION LEVEL BY ATC

APP 123.700 247.575 TWR 118.100 336.400 ATIS 126.680  
129.900 243.000 121.500 243.000

SOVIA  
RNAV RWY 09  
DEDIN 5D, GAPVO 5D, GOL 5D, MOREK 5D, NISVA 4D, RUMEN 5D, UMPIT 5D, VANET 5D



P/T	WPT ID	Flyover	Track MAG (GEO)	DIST NM	Turn Direction	Speed KT	ALT / FL FT	Additional Requirement
<b>NISVA 4D</b> NISVA FOUR DELTA ARRIVAL								
IF	NISVA	-	-	-	-	-	-	-
TF	SF412	-	117°(122.1°T)	9.4	Left	-	-	-
TF	SF411	-	089°(094.4°T)	6.8	-	-	-	-
TF	SF410	-	089°(094.5°T)	4.8	Right	210-	-	-
TF	SF409	-	179°(184.5°T)	5.0	Right	-	-	-
TF	LEMDO	-	269°(274.5°T)	7.3	-	210-	-	-
TF	SF407	-	269°(274.4°T)	4.0	-	-	-	-
TF	SF406	-	269°(274.4°T)	4.0	-	-	-	-
TF	SF405	-	269°(274.3°T)	4.0	Left	-	-	-
TF	SF404	-	179°(184.2°T)	5.0	Left	-	-	-
TF	SF403	-	089°(094.2°T)	4.0	-	-	-	-
TF	BENGO/IAF	-	089°(094.4°T)	4.0	-	-	A7000+	-
<b>GOL 5D</b> GOLYAMA FIVE DELTA ARRIVAL								
IF	GOL	-	-	-	-	-	-	-
TF	SF417	-	233°(238.1°T)	36.2	Right	-	-	-
TF	SF416	-	269°(274.7°T)	5.0	-	-	F130+	-
TF	SF409	-	269°(274.7°T)	8.0	-	-	-	-
TF	LEMDO	-	269°(274.5°T)	7.3	-	210-	-	-
TF	SF407	-	269°(274.4°T)	4.0	-	-	-	-
TF	SF406	-	269°(274.4°T)	4.0	-	-	-	-
TF	SF405	-	269°(274.3°T)	4.0	Left	-	-	-
TF	SF404	-	179°(184.2°T)	5.0	Left	-	-	-
TF	SF403	-	089°(094.2°T)	4.0	-	-	-	-
TF	BENGO/IAF	-	089°(094.4°T)	4.0	-	-	A7000+	-

P/T	WPT ID	Flyover	Track MAG (GEO)	DIST NM	Turn Direction	Speed KT	ALT / FL FT	Additional Requirement
<b>MOREK 5D</b> MOREK FIVE DELTA ARRIVAL								
IF	MOREK	-	-	-	-	-	-	-
TF	SF425	-	331°(336.1°T)	15.4	Left	-	F130+	-
TF	SF424	-	318°(323.4°T)	4.0	-	-	A9600+	-
TF	SF423	-	318°(323.3°T)	4.0	Left	-	A8000+	-
TF	XIMRI	-	269°(274.4°T)	5.0	-	210-	-	-
TF	SF421	-	269°(274.3°T)	4.0	-	-	-	-
TF	SF420	-	269°(274.3°T)	4.0	Right	-	-	-
TF	SF404	-	359°(004.2°T)	5.0	Right	-	-	-
TF	SF403	-	089°(094.2°T)	4.0	-	-	-	-
TF	BENGO/IAF	-	089°(094.4°T)	4.0	-	-	A7000+	-
<b>UMPIT 5D</b> UMPIT FIVE DELTA ARRIVAL								
IF	UMPIT	-	-	-	-	-	-	-
TF	LANGI	-	251°(256.1°T)	8.7	Right	-	-	-
TF	SF417	-	270°(275.0°T)	20.3	-	-	-	-
TF	SF416	-	269°(274.7°T)	5.0	-	-	F130+	-
TF	SF409	-	269°(274.7°T)	8.0	-	-	-	-
TF	LEMDO	-	269°(274.5°T)	7.3	-	210-	-	-
TF	SF407	-	269°(274.4°T)	4.0	-	-	-	-
TF	SF406	-	269°(274.4°T)	4.0	-	-	-	-
TF	SF405	-	269°(274.3°T)	4.0	Left	-	-	-
TF	SF404	-	179°(184.2°T)	5.0	Left	-	-	-
TF	SF403	-	089°(094.2°T)	4.0	-	-	-	-
TF	BENGO/IAF	-	089°(094.4°T)	4.0	-	-	A7000+	-

P/T	WPT ID	Flyover	Track MAG (GEO)	DIST NM	Turn Direction	Speed KT	ALT / FL FT	Additional Requirement
<b>GAPVO 5D</b> GAPVO FIVE DELTA ARRIVAL								
IF	GAPVO	-	-	-	-	-	-	-
TF	LANGI	-	292°(297.8°T)	8.1	Left	-	-	-
TF	SF417	-	270°(275.0°T)	20.3	-	-	-	-
TF	SF416	-	269°(274.7°T)	5.0	-	-	F130+	-
TF	SF409	-	269°(274.7°T)	8.0	-	-	-	-
TF	LEMDO	-	269°(274.5°T)	7.3	-	210-	-	-
TF	SF407	-	269°(274.4°T)	4.0	-	-	-	-
TF	SF406	-	269°(274.4°T)	4.0	-	-	-	-
TF	SF405	-	269°(274.3°T)	4.0	Left	-	-	-
TF	SF404	-	179°(184.2°T)	5.0	Left	-	-	-
TF	SF403	-	089°(094.2°T)	4.0	-	-	-	-
TF	BENGO/IAF	-	089°(094.4°T)	4.0	-	-	A7000+	-
<b>VANET 5D</b> VANET FIVE DELTA ARRIVAL								
IF	VANET	-	-	-	-	-	-	-
TF	SF425	-	318°(323.5°T)	17.3	-	-	F130+	-
TF	SF424	-	318°(323.4°T)	4.0	-	-	A9600+	-
TF	SF423	-	318°(323.3°T)	4.0	Left	-	A8000+	-
TF	XIMRI	-	269°(274.4°T)	5.0	-	210-	-	-
TF	SF421	-	269°(274.3°T)	4.0	-	-	-	-
TF	SF420	-	269°(274.3°T)	4.0	Right	-	-	-
TF	SF404	-	359°(004.2°T)	5.0	Right	-	-	-
TF	SF403	-	089°(094.2°T)	4.0	-	-	-	-
TF	BENGO/IAF	-	089°(094.4°T)	4.0	-	-	A7000+	-

P/T	WPT ID	Flyover	Track MAG (GEO)	DIST NM	Turn Direction	Speed KT	ALT / FL FT	Additional Requirement
<b>DEDIN 5D</b> DEDIN FIVE DELTA ARRIVAL								
IF	DEDIN	-	-	-	-	-	-	-
TF	SF434	-	261°(266.1°T)	8.8	Right	-	-	-
TF	SF430	-	270°(275.0°T)	21.7	-	-	F130+	-
TF	SF429	-	269°(274.6°T)	9.3	-	-	A9600+	-
TF	SF423	-	269°(274.5°T)	5.0	-	-	A8000+	-
TF	XIMRI	-	269°(274.4°T)	5.0	-	210-	-	-
TF	SF421	-	269°(274.3°T)	4.0	-	-	-	-
TF	SF420	-	269°(274.3°T)	4.0	Right	-	-	-
TF	SF404	-	359°(004.2°T)	5.0	Right	-	-	-
TF	SF403	-	089°(094.2°T)	4.0	-	-	-	-
TF	BENGO/IAF	-	089°(094.4°T)	4.0	-	-	A7000+	-
<b>RUMEN 5D</b> RUMEN FIVE DELTA ARRIVAL								
IF	RUMEN	-	-	-	-	-	-	-
TF	SF434	-	306°(311.2°T)	25.5	Left	-	-	-
TF	SF430	-	270°(275.0°T)	21.7	-	-	F130+	-
TF	SF429	-	269°(274.6°T)	9.3	-	-	A9600+	-
TF	SF423	-	269°(274.5°T)	5.0	-	-	A8000+	-
TF	XIMRI	-	269°(274.4°T)	5.0	-	210-	-	-
TF	SF421	-	269°(274.3°T)	4.0	-	-	-	-
TF	SF420	-	269°(274.3°T)	4.0	Right	-	-	-
TF	SF404	-	359°(004.2°T)	5.0	Right	-	-	-
TF	SF403	-	089°(094.2°T)	4.0	-	-	-	-
TF	BENGO/IAF	-	089°(094.4°T)	4.0	-	-	A7000+	-

See page LBSF AD 2 - 61.1 for waypoint coordinates

INTENTIONALLY LEFT BLANK