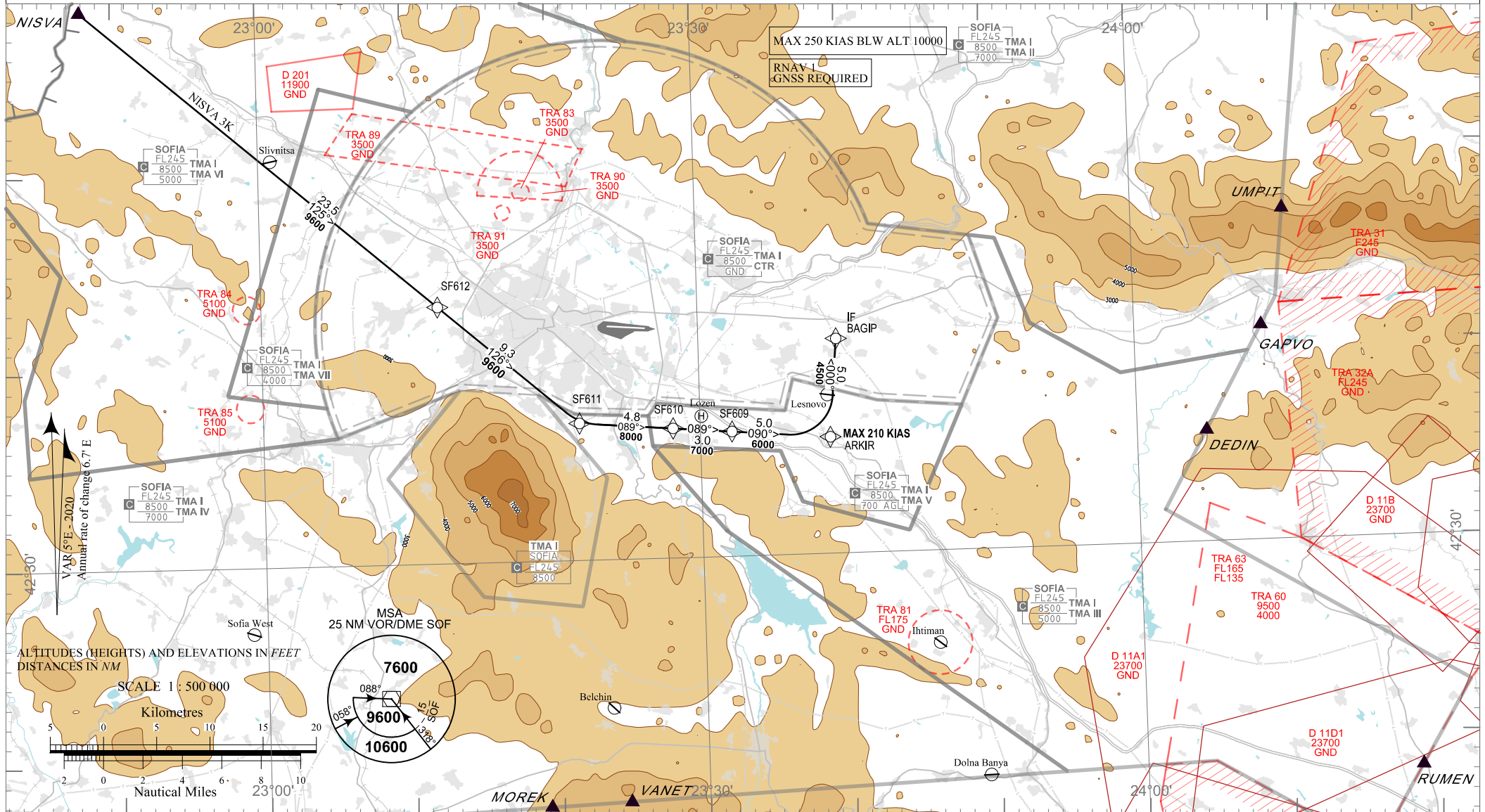


**STANDARD ARRIVAL CHART -  
INSTRUMENT (STAR) - ICAO**

TRANSITION ALT 10500 FT  
TRANSITION LEVEL BY ATC

APP 123.700 247.575 TWR 118.100 336.400 ATIS 126.680  
129.900 120.200  
121.500 243.000 121.500 243.000

**SOFIA**  
**RNAV RWY 27**  
NISVA 3K



P/T	WPT ID	Flyover	Track MAG (GEO)	DIST NM	Turn Direction	Speed KT	ALT FT	Additional Requirements
<b>NISVA 3K</b> NISVA THREE KILO ARRIVAL								
IF	NISVA	-	-	-	-	-	-	-
TF	SF612	-	125°(130.4°T)	23.5	-	-	-	-
TF	SF611	-	126°(130.7°T)	9.3	Left	-	9600+	-
TF	SF610	-	089°(094.6°T)	4.8	-	-	8000+	-
TF	SF609	-	089°(094.7°T)	3.0	-	-	7000+	-
TF	ARKIR	-	090°(094.8°T)	5.0	Left	210-	6000+	-
TF	BAGIP/IF	-	000°(004.8°T)	5.0	Left	-	4500+	-

See page LBSF AD 2 - 61.1 for waypoint coordinates