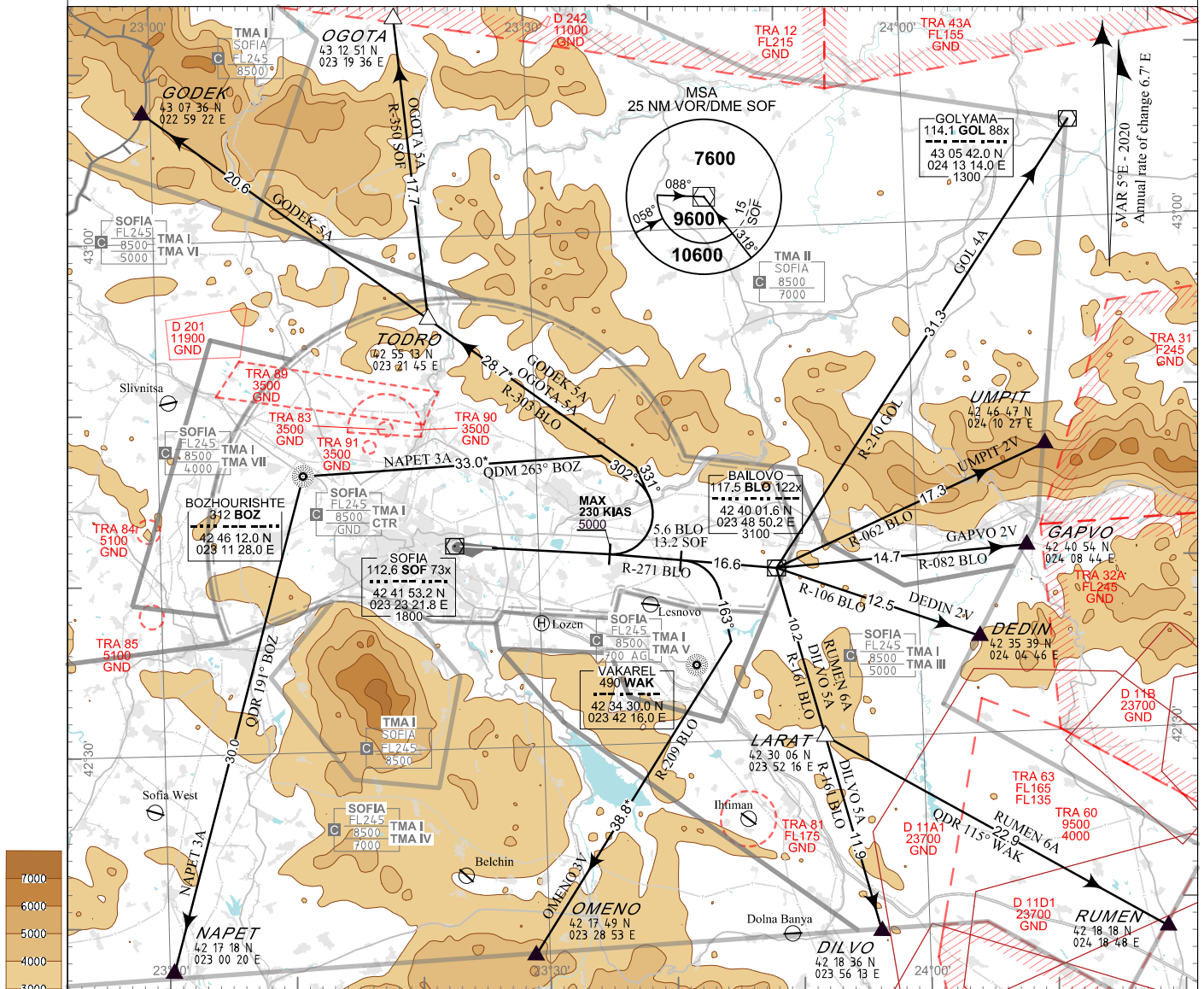


**STANDARD DEPARTURE
CHART - INSTRUMENT
(SID) - ICAO**

TRANSITION ALT 10500 FT	APP 123.700	TWR 118.100	ATIS 126.680
TRANSITION LEVEL BY ATC	129.900	120.200	
	247.575	336.400	
	121.500	121.500	
	243.000	243.000	

**SOFIA
RWY 09**

DEDIN 2V, DILVO 5A, GAPVO 2V, GODEK 5A,
GOL 4A, NAPET 3A, OGOTA 5A, OMENO 3V,
RUMEN 6A, UMPIT 2V



ALTITUDES (HEIGHTS) AND ELEVATIONS IN FEET
DISTANCES IN NM
Distances marked by * are approximate distances from DER
SCALE 1 : 700 000

Initial Climb:

Climb straight ahead to 5000 FT then proceed according to the cleared departure procedure.

After take-off immediately contact SOFIA APPROACH

ROUTES:

Proceed according to cleared departure procedure climbing to level assigned by ATC. See the descriptions on the verso of the chart.

In case of activation of TRA 63 departures to RUMEN might be required to climb FL170 before the boundary of TRA 63. If unable to comply inform ATC in good time so that alternative clearance can be issued. Expect omnidirectional DEP and/or vectoring to be provided by ATC.

WARNING:

When given a clearance to a level higher than the specified in the SID, follow published SID profile, unless restrictions are explicitly cancelled by ATC.

Restrictions:

Initial turn to GODEK, OGOTA and NAPET is limited to MAX 230 KIAS

OMNIDIRECTIONAL DEPARTURE:

Climb straight ahead to 6800 FT, turn to the corresponding point or as cleared by ATC
MNM climb gradient of 5% (304 FT/NM) to 9600 FT

DEDIN 2V

DEDIN TWO VICTOR DEPARTURE

MNM climb gradient 4.7% (286FT/NM) to 10000FT.

Climb straight ahead to 5000. Intercept R-271 BLO to BLO. At BLO VOR turn right to intercept R-106 BLO to DEDIN.

DILVO 5A

DILVO FIVE ALPHA DEPARTURE

MNM climb gradient 5.0% (304FT/NM) to 4500FT.

Climb straight ahead to 5000. Intercept R-271 BLO to BLO. At BLO VOR turn right to intercept R-161 BLO to DILVO.

GAPVO 2V

GAPVO TWO VICTOR DEPARTURE

MNM climb gradient 4.4% (268FT/NM) to 10000FT.

Climb straight ahead to 5000. Intercept R-271 BLO to BLO. At BLO VOR turn left to intercept R-082 BLO to GAPVO.

GODEK 5A

GODEK FIVE ALPHA DEPARTURE

MNM climb gradient 5.0% (304FT/NM) to 6300FT.

Climb straight ahead to 5000. Turn left to track 331°. Intercept R-303 BLO to GODEK.

GOL 4A

GOLYAMA FOUR ALPHA DEPARTURE

MNM climb gradient 5.0% (304FT/NM) to 4000FT.

Climb straight ahead to 5000. Intercept R-271 BLO to BLO. At BLO VOR turn left to intercept R-210 GOL to GOL.

NAPET 3A

NAPET THREE ALPHA DEPARTURE

MNM climb gradient 5.0% (304FT/NM) to 4500FT.

Climb straight ahead to 5000. Turn left to track 302°. Intercept QDM 263° BOZ to BOZ. At BOZ NDB turn left to intercept QDR 191° BOZ to NAPET.

OGOTA 5A

OGOTA FIVE ALPHA DEPARTURE

MNM climb gradient 5.0% (304FT/NM) to 6300FT.

Climb straight ahead to 5000. Turn left to track 331°. Intercept R-303 BLO to TODRO. Intercept R-350 SOF to OGOTA.

OMENO 3V

OMENO THREE VICTOR DEPARTURE

MNM climb gradient 5.0% (304FT/NM) to 10000FT.

Climb straight ahead to 5000. Intercept R-271 BLO to 5.6 BLO (13.2 SOF). Turn right to track 163°. Intercept R-209 BLO to OMENO.

RUMEN 6A

RUMEN SIX ALPHA DEPARTURE

MNM climb gradient 5.0% (304FT/NM) to 4000FT.

Climb straight ahead to 5000. Intercept R-271 BLO to BLO. At BLO VOR turn right to intercept R-161 BLO to LARAT. At LARAT turn left to intercept QDR 115° WAK to RUMEN.

UMPIT 2V

UMPIT TWO VICTOR DEPARTURE

MNM climb gradient 4.1% (249FT/NM) to 10000FT.

Climb straight ahead to 5000. Intercept R-271 BLO to BLO. At BLO VOR turn left to intercept R-062 BLO to UMPIT.

See page LBSF AD 2 - 61.1 for waypoint coordinates