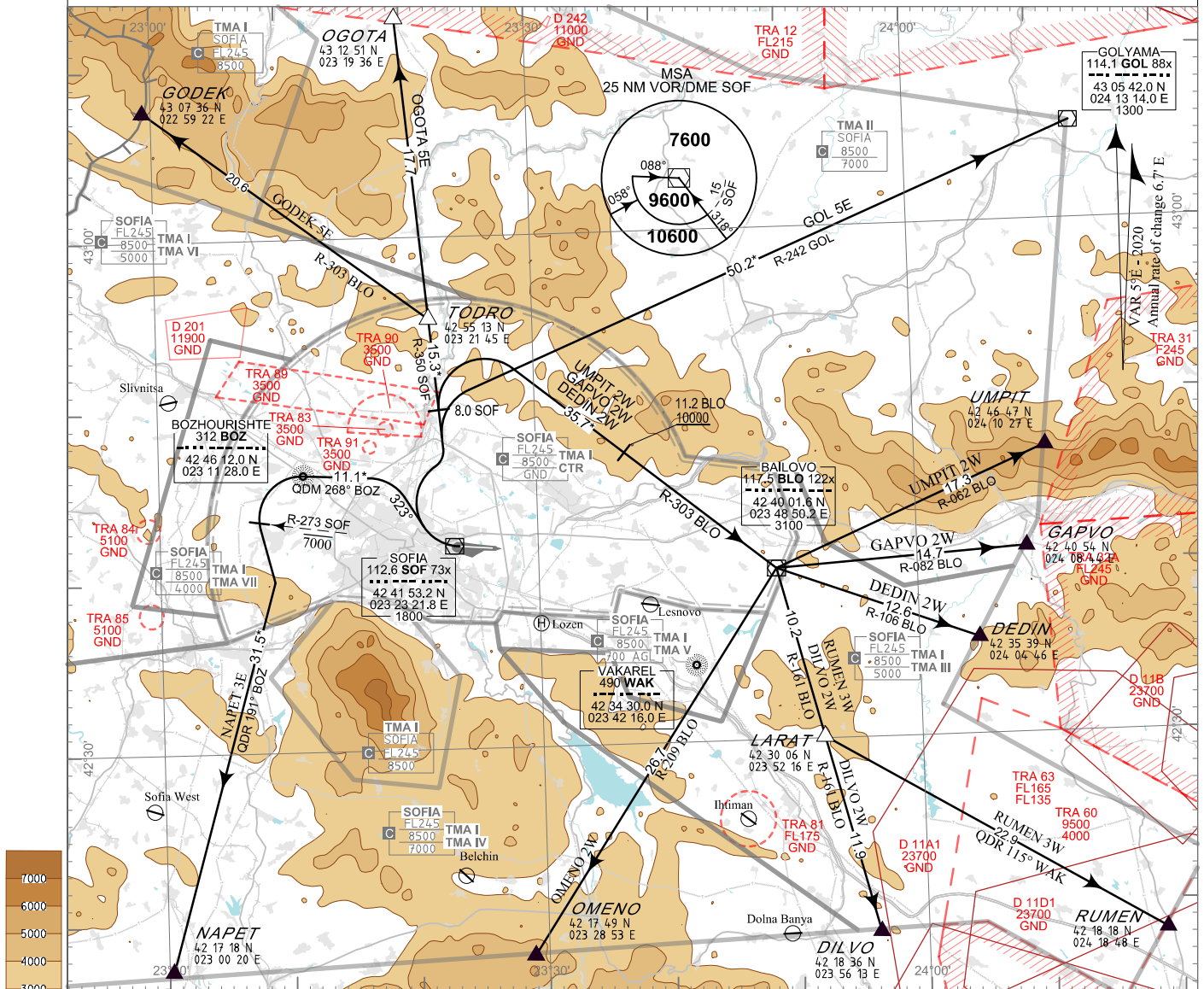


**STANDARD DEPARTURE
CHART - INSTRUMENT
(SID) - ICAO**

| | | | |
|-------------------------|-------------|-------------|--------------|
| TRANSITION ALT 10500 FT | APP 123.700 | TWR 118.100 | ATIS 126.680 |
| TRANSITION LEVEL BY ATC | 129.900 | 120.200 | |
| | 247.575 | 336.400 | |
| | 121.500 | 121.500 | |
| | 243.000 | 243.000 | |

**SOFIA
RWY 27**

DEDIN 2W, DILVO 2W, GAPVO 2W, GODEK 5E,
GOL 5E, NAPET 3E, OGGOTA 5E,
OMENO 2W, RUMEN 3W, UMPIT 2W



ALTITUDES (HEIGHTS) AND ELEVATIONS IN FEET
DISTANCES IN NM
Distances marked by * are approximate distances from DER

Initial Climb:

Climb straight ahead to 2300 FT then turn according to the cleared departure procedure. Turn before DER is allowed after passing 2300 FT and establishing MNM climb gradient of 5% (304 FT/NM).

After take-off immediately contact SOFIA APPROACH

ROUTES:

Proceed according to cleared departure procedure climbing to level assigned by ATC. See the descriptions on the verso of the chart.
In case of activation of TRA 63 departures to RUMEN might be required to climb FL170 before the boundary of TRA 63.
If unable to comply inform ATC in good time so that alternative clearance can be issued. Expect omnidirectional DEP and/or vectoring to be provided by ATC.

WARNING:

When given a clearance to a level higher than the specified in the SID, follow published SID profile, unless restrictions are explicitly cancelled by ATC.

Restrictions:

Initial turn is limited to MAX 205 KIAS.

OMNIDIRECTIONAL DEPARTURE:

Climb on track 285° to 7500 FT, turn to the corresponding point or as cleared by ATC
MNM climb gradient of 5% (304 FT/NM) to 9600 FT

DEDIN 2W

DEDIN TWO WHISKEY DEPARTURE

MNM climb gradient 5.0% (304FT/NM) to 10000FT.

Climb straight ahead to 2300FT. Turn right to intercept R-350 SOF. At 8.0 SOF turn right to intercept R-303 BLO to BLO. At BLO turn left and proceed on R-106 BLO to DEDIN.

Cross 11.2 DME BLO at or ABV 10000FT.

DILVO 2W

DILVO TWO WHISKEY DEPARTURE

MNM climb gradient 5.0% (304FT/NM) to 10000FT.

Climb straight ahead to 2300FT. Turn right to intercept R-350 SOF. At 8.0 SOF turn right to intercept R-303 BLO to BLO. At BLO turn right and proceed on R-161 BLO to DILVO.

Cross 11.2 DME BLO at or ABV 10000FT.

GAPVO 2W

GAPVO TWO WHISKEY DEPARTURE

MNM climb gradient 5.0% (304FT/NM) to 10000FT.

Climb straight ahead to 2300FT. Turn right to intercept R-350 SOF. At 8.0 SOF turn right to intercept R-303 BLO to BLO. At BLO turn left and proceed on R-082 BLO to GAPVO.

Cross 11.2 DME BLO at or ABV 10000FT.

GODEK 5E

GODEK FIVE ECHO DEPARTURE

MNM climb gradient 5.0% (304FT/NM) to 10000FT due to airspace restrictions.

Climb straight ahead to 2300FT. Turn right to intercept R-350 SOF to TODRO. Turn left to intercept R-303 BLO to GODEK.

GOL 5E

GOLYAMA FIVE ECHO DEPARTURE

MNM climb gradient 5.0% (304FT/NM) to 8000FT.

Climb straight ahead to 2300FT. Turn right to intercept R-350 SOF. Turn right to intercept R-242 GOL to GOL.

NAPET 3E

NAPET THREE ECHO DEPARTURE

MNM climb gradient 5.0% (304FT/NM) to 7000FT.

Climb straight ahead to 2300FT. Turn right to track 323°. Intercept QDM 268° BOZ to BOZ. At BOZ turn left to intercept QDR 191° BOZ to NAPET.

Cross R-273 SOF at or BLW 7000FT.

OGOTA 5E

OGOTA FIVE ECHO DEPARTURE

MNM climb gradient 5.0% (304FT/NM) to 8000FT.

Climb straight ahead to 2300 FT. Turn right to intercept R-350 SOF to OGOTA.

OMENO 2W

OMENO TWO WHISKEY DEPARTURE

MNM climb gradient 5.0% (304FT/NM) to 10000FT.

Climb straight ahead to 2300FT. Turn right to intercept R-350 SOF. At 8.0 SOF turn right to intercept R-303 BLO to BLO. At BLO turn right and proceed on R-209 BLO to OMENO.

Cross 11.2 DME BLO at or ABV 10000FT.

RUMEN 3W

RUMEN THREE WHISKEY DEPARTURE

MNM climb gradient 5.0% (304FT/NM) to 10000FT.

Climb straight ahead to 2300FT. Turn right to intercept R-350 SOF. At 8.0 SOF turn right to intercept R-303 BLO to BLO. At BLO turn right and proceed on R-161 BLO to LARAT. At LARAT turn left to intercept QDR 115° WAK to RUMEN.

Cross 11.2 DME BLO at or ABV 10000 FT.

UMPIT 2W

UMPIT TWO WHISKEY DEPARTURE

MNM climb gradient 5.0% (304FT/NM) to 10000FT.

Climb straight ahead to 2300FT. Turn right to intercept R-350 SOF. At 8.0 SOF turn right to intercept R-303 BLO to BLO. At BLO turn left and proceed on R-062 BLO to UMPIT.

Cross 11.2 DME BLO at or ABV 10000 FT.

See page LBSF AD 2 - 61.1 for waypoint coordinates