

AERODROME CHART - ICAO

42°41'42" N
023°24'30" E

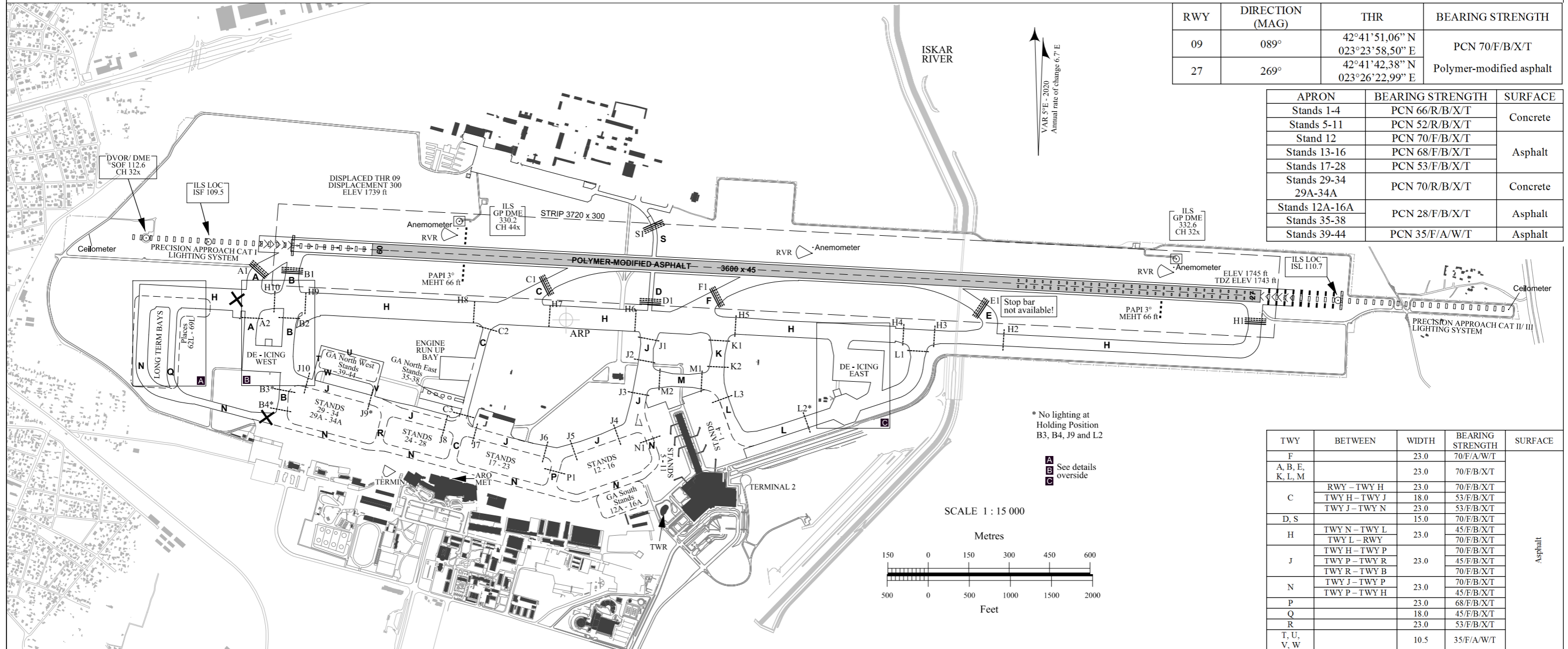
ELEV 1742 ft

TWR 118.100
120.200
336.400
121.500
243.000

**SOFIA
ADC**

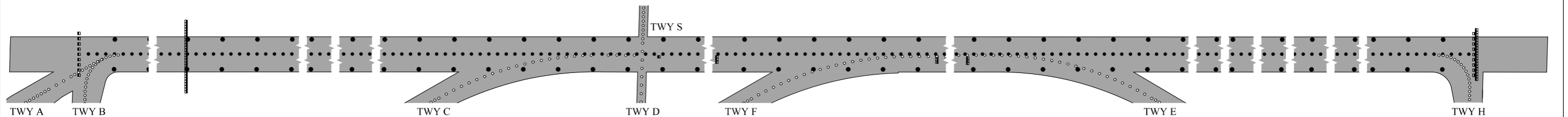
RWY	DIRECTION (MAG)	THR	BEARING STRENGTH
09	089°	42°41'51,06" N 023°23'58,50" E	PCN 70/F/B/X/T
27	269°	42°41'42,38" N 023°26'22,99" E	Polymer-modified asphalt

APRON	BEARING STRENGTH	SURFACE
Stands 1-4	PCN 66/R/B/X/T	Concrete
Stands 5-11	PCN 52/R/B/X/T	
Stand 12	PCN 70/F/B/X/T	Asphalt
Stands 13-16	PCN 68/F/B/X/T	
Stands 17-28	PCN 53/F/B/X/T	
Stands 29-34 29A-34A	PCN 70/R/B/X/T	Concrete
Stands 12A-16A	PCN 28/F/B/X/T	Asphalt
Stands 35-38	PCN 53/F/B/X/T	Asphalt
Stands 39-44	PCN 35/F/A/W/T	

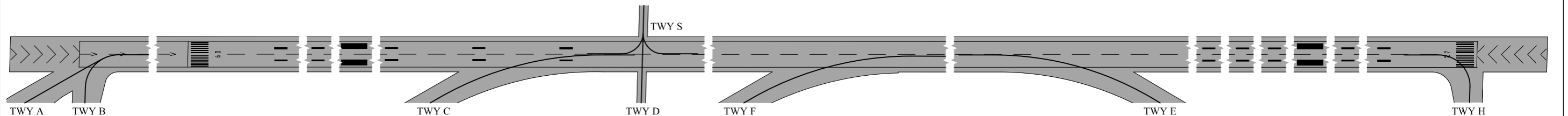


TWY	BETWEEN	WIDTH	BEARING STRENGTH	SURFACE
F		23.0	70/F/A/W/T	Asphalt
A, B, E, K, L, M		23.0	70/F/B/X/T	
C	RWY - TWY H	23.0	70/F/B/X/T	
	TWY H - TWY J	18.0	53/F/B/X/T	
D, S	TWY J - TWY N	23.0	53/F/B/X/T	
		15.0	70/F/B/X/T	
H	TWY N - TWY L	23.0	45/F/B/X/T	
	TWY L - RWY	23.0	70/F/B/X/T	
J	TWY H - TWY P	23.0	70/F/B/X/T	
	TWY P - TWY R	23.0	45/F/B/X/T	
	TWY R - TWY B	23.0	70/F/B/X/T	
N	TWY J - TWY P	23.0	70/F/B/X/T	
	TWY P - TWY H	23.0	45/F/B/X/T	
P		23.0	68/F/B/X/T	
Q		18.0	45/F/B/X/T	
R		23.0	53/F/B/X/T	
T, U, V, W		10.5	35/F/A/W/T	

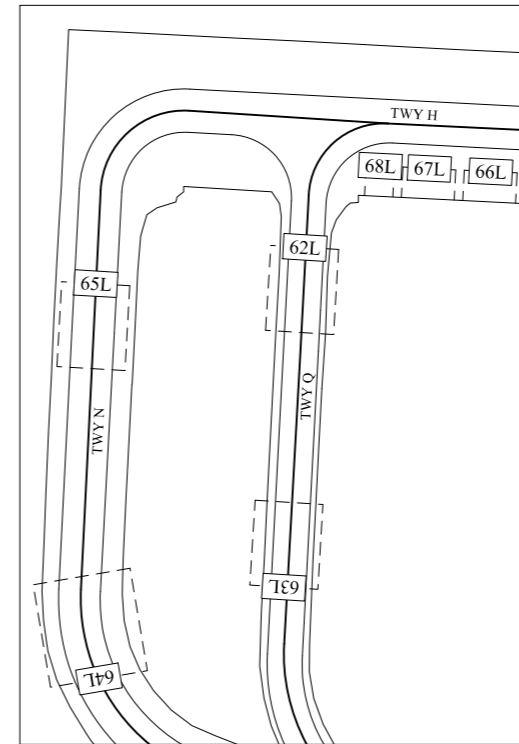
LIGHTING AIDS RWY 09/27 AND EXIT TWY (TDZ lighting not shown)



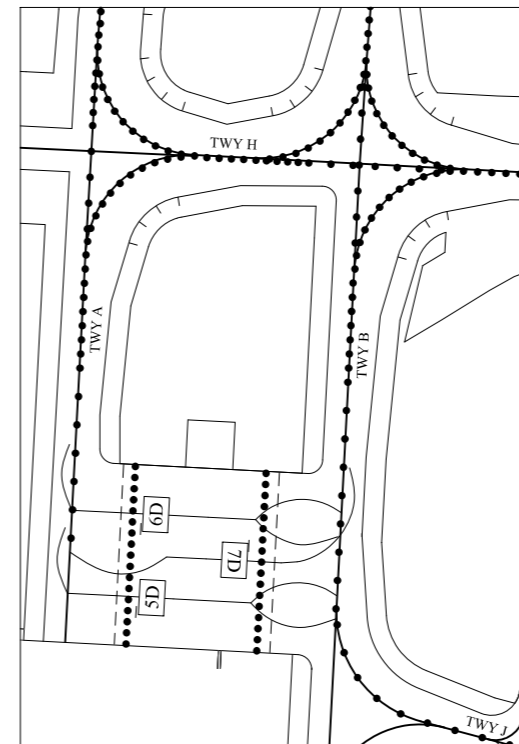
MARKING AIDS RWY 09/27 AND EXIT TWY



A
Long Term Bays



B
De-icing West



C
De-icing East

