

**INSTRUMENT  
APPROACH  
CHART - ICAO**

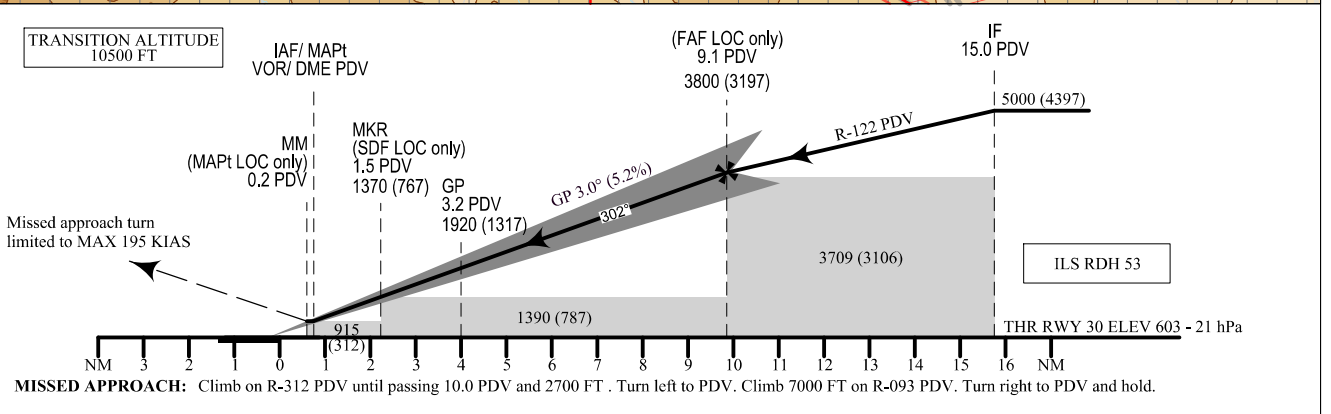
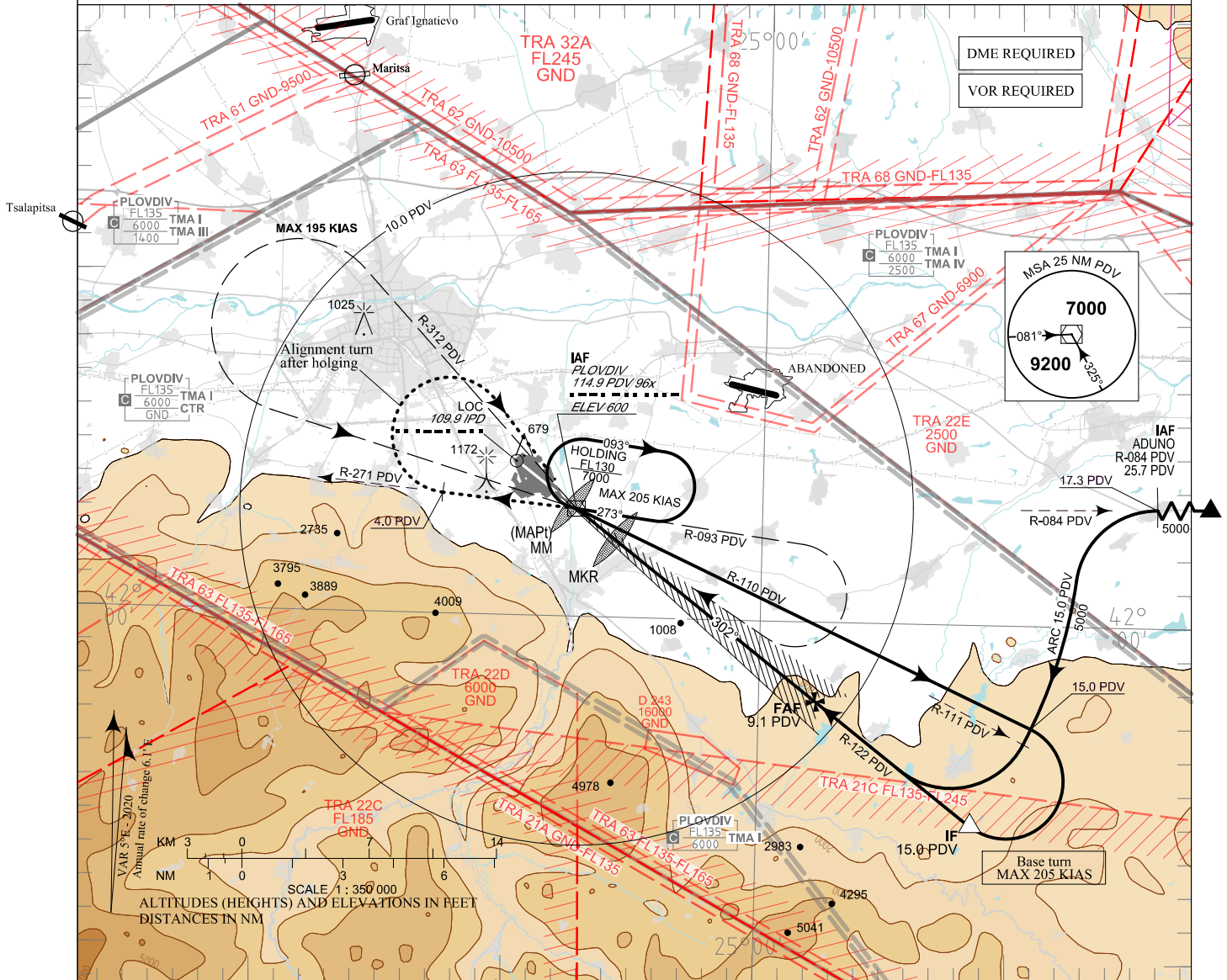
AERODROME ELEV 603 - 21 hPa  
THR RWY 30 ELEV 603 - 21 hPa  
OCH RELATED TO THR RWY 30 ELEV  
CIRCLING OCH RELATED TO AD ELEV

TWR 133.600  
125.500  
362.550  
121.500  
243.000

ATIS 127.205



**PLOVDIV**  
**ILS w or LOC w  
RWY 30**



**MISSED APPROACH:** Climb on R-312 PDV until passing 10.0 PDV and 2700 FT. Turn left to PDV. Climb 7000 FT on R-093 PDV. Turn right to PDV and hold.

OCA (OCH)	A	B	C	D
ILS	m 304 (130)	317 (133)	320 (136)	323 (139)
Missed APCH gradient 2.5%	ft 1030 (426)	1040 (436)	1050 (446)	1060 (456)
ILS	m 235 (51)	238 (54)	241 (57)	244 (60)
Missed APCH gradient 3.5%	ft 771 (167)	781 (177)	791 (187)	801 (197)
LOC only	m 300 (115)			
	ft 970 (370)			
SDF not received	m 420 (235)			
	ft 1370 (770)			
Circling NE of AD only	m 310 (125)	340 (155)	430 (250)	
	ft 1010 (410)	1110 (510)	1410 (810)	

DIST PDV NM / km	8.0 / 14.8	7.0 / 13.0	6.0 / 11.1	5.0 / 9.3
DIST THR NM / km	8.8 / 16.2	7.8 / 14.4	6.8 / 12.5	5.8 / 10.7
ALT (HGT) m	1050 (865)	950 (770)	855 (670)	760 (575)
ALT (HGT) ft	3440 (2830)	3120 (2520)	2800 (2200)	2490 (1890)
DIST PDV NM / km	4.0 / 7.4	3.0 / 5.6	2.0 / 3.7	1.0 / 1.9
DIST THR NM / km	4.8 / 8.8	3.8 / 6.9	2.8 / 5.1	1.8 / 3.2
ALT (HGT) m	660 (480)	565 (380)	470 (285)	375 (190)
ALT (HGT) ft	2170 (1570)	1860 (1250)	1540 (940)	1230 (620)

GS	kt	60	80	100	120	140	160	180
FAF - MAPt 9.3 NM	min:sec	9:18	6:59	5:35	4:39	3:59	3:29	3:06
Rate of descent	ft/min	316	421	527	632	737	843	948

Timing is not authorized for defining MAPt

See page LBDP AD 2 - 61.1 for non-RNAV fixes coordinates and other data.