

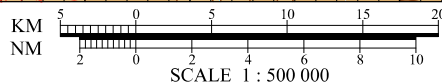
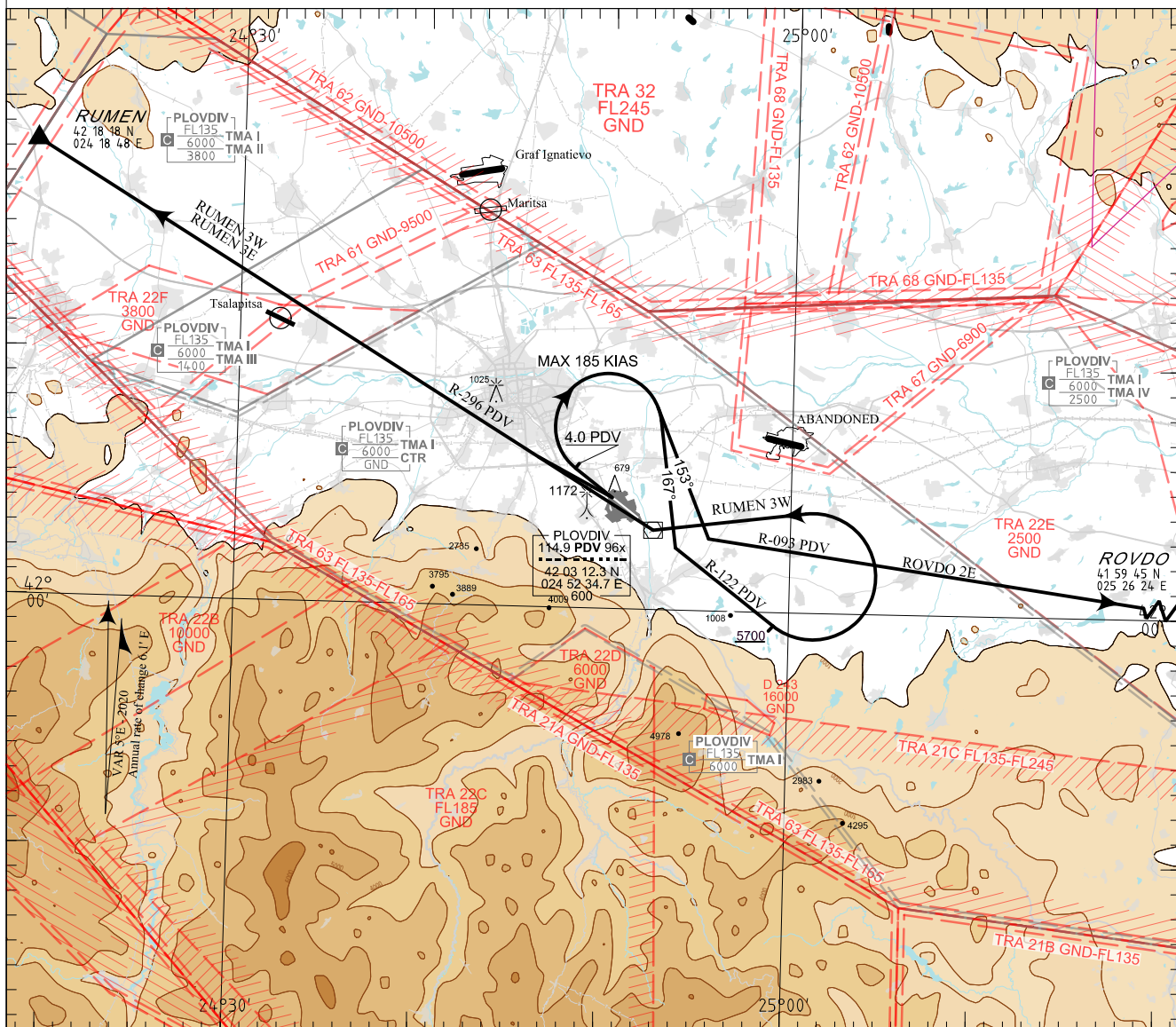
**STANDARD DEPARTURE CHART -
INSTRUMENT (SID) - ICAO**

TRANSITION ALT 10500 FT
TRANSITION LEVEL BY ATC

TWR 133.600
125.500
362.550
121.500
243.000

ATIS 127.205

**PLOVDIV
VOR RWY 30**
RUMEN 3E, RUMEN 3W,
ROVDO 2E



ALTITUDES (HEIGHTS) AND ELEVATIONS IN FEET
DISTANCES IN NM

Restrictions:

Initial turns are limited to MAX 185 KIAS

In case of activation of TRA 61 RUMEN 3E may not be available.
In case of activation of TRA 63 all departures may be required to maintain 10000 FT until leaving TRA 63.

AFTER TAKE-OFF:

Proceed according to cleared departure procedure to the level assigned by ATC. Strictly follow the prescribed procedure profile, unless the restrictions are explicitly cancelled by ATC. If unable to comply inform ATC in good time so that alternative clearance can be issued.

DEPARTURE PROCEDURES:

ROVDO 2E

ROVDO TWO ECHO DEPARTURE
MINM climb gradient 5.0% (304 FT/NM) to 9500 FT.

Climb straight ahead until passing 4.0 PDV and 1100 FT.
Turn right to track 153°. Intercept R-093 PDV to ROVDO.

RUMEN 3E

RUMEN THREE ECHO DEPARTURE
MINM climb gradient 5.0% (304 FT/NM) to 5000 FT.

Climb on track 290°. Intercept R-296 PDV to RUMEN.

RUMEN 3W

RUMEN THREE WHISKEY DEPARTURE
MINM climb gradient 5.0% (304 FT/NM) to 6000 FT.

Climb straight ahead until passing 4.0 PDV and 1100 FT.
Turn right to track 167°. Intercept R-122 PDV outbound climbing 5700 FT.
Turn left to PDV and climb to 10000 FT.
Intercept R-296 from PDV and maintain 10000 FT to RUMEN.

INTENTIONALLY LEFT BLANK