

**VISUAL APPROACH  
CHART - ICAO**

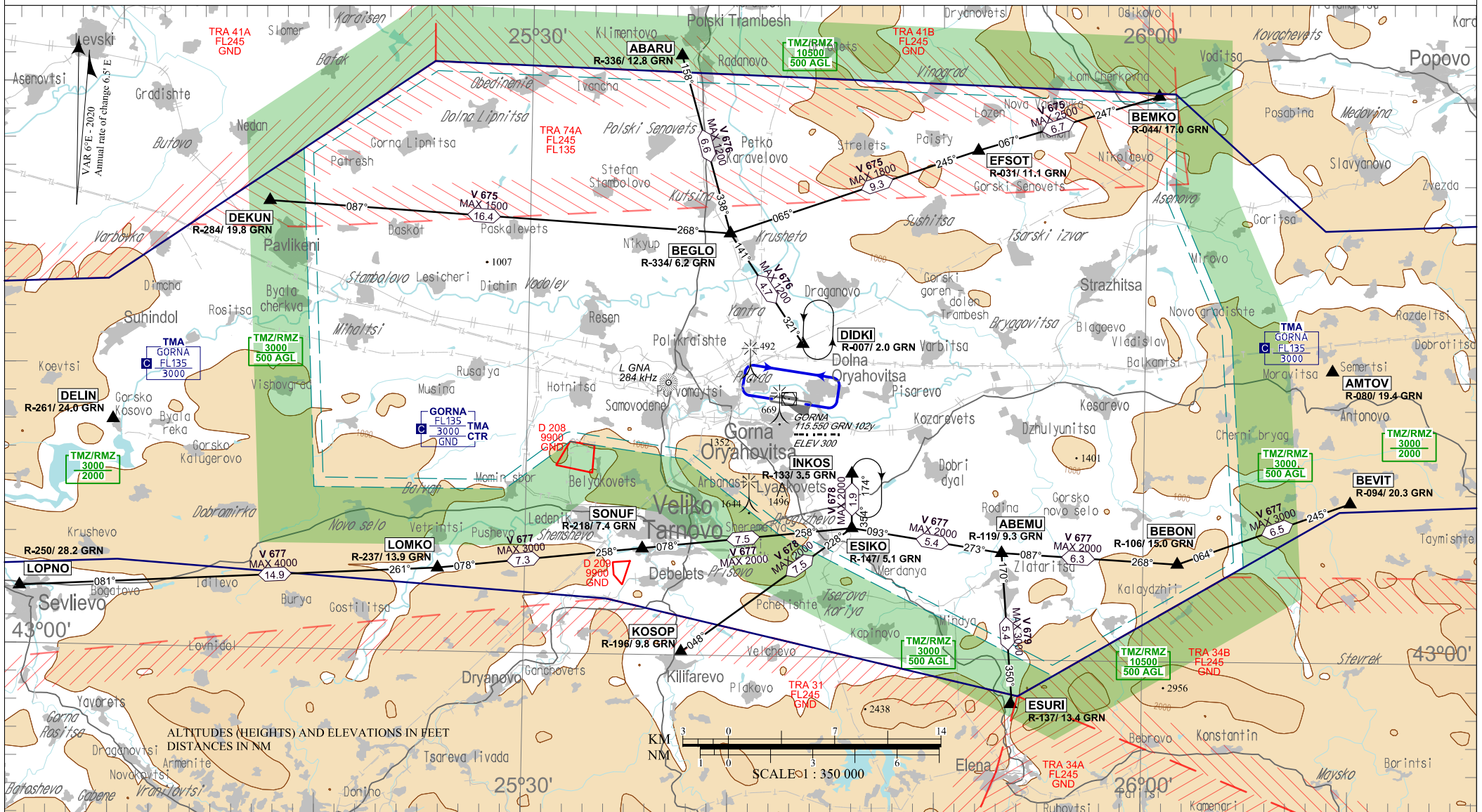
TRANSITION ALT 10500 FT  
TRANSITION LEVEL BY ATC

AD ELEV 283 - 10 hPa  
ARP 43 09 06 N 025 42 43 E

VASIS  
RWY 09 - PAPI 3.0° MEHT 50 DUAL  
RWY 27 - PAPI 3.0° MEHT 50 DUAL

TWR 133.500 246.825 ATIS 127.130  
124.500  
121.500 243.000

**GORNA ORYAHOVITSA  
VFR ROUTES**



Маршрути за полети по правилата за визуални полети  
Visual Flight Rules (VFR) Routes

Route designator Name of significant points Coordinates	Waypoint IDENT of VOR/DME BRG & DIST km (NM) ELEV DME Antenna m (ft)	MAG BRG Geodesic DIST km (NM)	Upper Limits	Lateral Limits	Direction of cruising levels		Remarks Controlling unit Frequency
			Lower Limits		Airspace classification	Odd	
1	2	3	4	5	6		7
<b>V675</b>	Total DIST km (NM) 60 (32.4)						
	▲ <b>DEKUN (N of Pavlikeni)</b> 431556N 0251719E	GRN 284° 36.6 (19.8) 90 (300)	087°/268° 30.4 (16.4)	1500FT AMSL 500FT AGL Class C	2.2NM	↓	SSR transponder and continuous two-way air-ground communication required. AVBL ABV upper limit after coordination with respective ATS unit. Gorna Tower - 133.500 MHz, 124.500 MHz, 246.825 MHz FIC Sofia: 130.600 MHz
	▲ <b>BEGLO (N of Krusheto)</b> 431503N 0253946E	GRN 334° 11.6 (6.2) 90 (300)		065°/245° 17.2 (9.3)			
	▲ <b>EFSOT (S of village Lozen)</b> 431807N 0255146E	GRN 031° 20.6 (11.1) 90 (300)	067°/247° 12.4 (6.7)	2500FT AMSL 500FT AGL Class C			
	▲ <b>BEMKO (N of Boika dam)</b> 432007N 0260033E	GRN 044° 31.5 (17.0) 90 (300)					
<b>Note:</b> ▲ - Compulsory △ - On- request							

Route designator Name of significant points Coordinates	Waypoint IDENT of VOR/DME BRG & DIST km (NM) ELEV DME Antenna m (ft)	MAG BRG Geodesic DIST km (NM)	Upper Limits	Lateral Limits	Direction of cruising levels		Remarks Controlling unit Frequency
			Lower Limits		Airspace classification	Odd	
1	2	3	4	5	6		7
<b>V676</b>	Total DIST km (NM) 20.9 (11.3)						
	▲ <b>ABARU (S of Polski Trambesh)</b> 432121N 0253715E	GRN 336° 23.7 (12.8) 90 (300)	158°/338° 12.2 (6.6)	1200FT AMSL 500FT AGL Class C	2.2NM	↓	SSR transponder and continuous two-way air-ground communication required. AVBL ABV upper limit after coordination with respective ATS unit. Gorna Tower - 133.500 MHz, 124.500 MHz, 246.825 MHz FIC Sofia: 130.600 MHz
	▲ <b>BEGLO (N of Krusheto)</b> 431503N 0253946E	GRN 334° 11.6 (6.2) 90 (300)					
▲ <b>DIDKI (N of Dolna Oryahovitsa)</b> 431109N 0254320E	GRN 008° 3.7 (2.0) 90 (300)	141°/321° 8.7 (4.7)		↑			
<b>Note:</b> ▲ - Compulsory △ - On- request							

Маршрути за полети по правилата за визуални полети  
Visual Flight Rules (VFR) Routes

Route designator Name of significant points Coordinates	Waypoint IDENT of VOR/DME BRG & DIST km (NM) ELEV DME Antennam (ft)	MAG BRG Geodesic DIST km (NM)	Upper Limits Lower Limits  Airspace classification	Lateral Limits	Direction of cruising levels  Odd Even	Remarks Controlling unit Frequency	
1	2	3	4	5	6	7	
<b>V677</b>	Total DIST km (NM) 88.7 (47.9)						
▲ <b>LOPNO</b> (N of town Sevlievo) 430204N 0250532E	GRN 250° 52.1 (28.2) 90 (300)	081°/261° 27.6 (14.9)	3000FT AMSL 500FT AGL Class C	2.2NM	↓	SSR transponder and continuous two-way air-ground communication required. AVBL ABV upper limit after coordination with respective ATS unit. Gorna Tower - 133.500 MHz, 124.500 MHz, 246.825 MHz FIC Sofia: 130.600 MHz	
▲ <b>LOMKO</b> (S of Vetrintsi) 430258N 0252547E	GRN 238° 25.7 (13.9) 90 (300)	078°/258° 13.5 (7.3)	3000FT AMSL 500FT AGL Class C				
▲ <b>SONUF</b> (SW of Veliko Tarnovo) 430347N 0253542E	GRN 218° 13.8 (7.5) 90 (300)	078°/258° 13.9 (7.5)					
▲ <b>ESIKO</b> (NE of Dragizhevo) 430437N 0254551E	GRN 148° 9.5 (5.1) 90 (300)	093°/273° 10.0 (5.4)	2000FT AMSL 500FT AGL Class C				
▲ <b>ABEMU</b> (N of Zlataritsa) 430348N 0255308E	GRN 120° 17.3 (9.3) 90 (300)	087°/267° 11.6 (6.3)					
▲ <b>BEBON</b> (NE of Kalaydzhi) 430328N 0260140E	GRN 107° 27.8 (15.0) 90 (300)						
▲ <b>BEVIT</b> (E of Halvadijsko) 430541N 0261002E	GRN 094° 37.6 (20.3) 90 (300)	064°/245° 12.1 (6.5)	3000FT AMSL 500FT AGL Class C				↑
<b>Note:</b> ▲ - Compulsory △ - On- request							

Маршрути за полети по правилата за визуални полети  
Visual Flight Rules (VFR) Routes

Route designator Name of significant points Coordinates	Waypoint IDENT of VOR/DME BRG & DIST km (NM) ELEV DME Antenna m (ft)	MAG BRG Geodesic DIST km (NM)	Upper Limits	Lateral Limits	Direction of cruising levels		Remarks Controlling unit Frequency
			Lower Limits  Airspace classification		Odd	Even	
1	2	3	4	5	6		7
<b>V678</b>	Total DIST km (NM) 17.5 (9.4)						
▲ <b>KOSOP (N of Kilifarevo)</b> 430008N 0253739E	GRN 197° 18.1 (9.8) 90 (300)	048°/228° 13.9 (7.5)	2000FT AMSL 500FT AGL Class C	2.2NM	↓ ↑ ↓	↑ ↓	SSR transponder and continuous two-way air-ground communication required. AVBL ABV upper limit after coordination with respective ATS unit. Gorna Tower - 133.500 MHz, 124.500 MHz, 246.825 MHz FIC Sofia: 130.600 MHz
▲ <b>ESIKO (NE of Dragizhevo)</b> 430437N 0254551E	GRN 148° 9.5 (5.1) 90 (300)						
▲ <b>INKOS (E of Lyaskovets)</b> 430633N 0254549E	GRN 134° 6.5 (3.5) 90 (300)	354°/174° 3.6 (1.9)					
<b>Note:</b> ▲ - Compulsory △ - On- request							

Route designator Name of significant points Coordinates	Waypoint IDENT of VOR/DME BRG & DIST km (NM) ELEV DME Antenna m (ft)	MAG BRG Geodesic DIST km (NM)	Upper Limits	Lateral Limits	Direction of cruising levels		Remarks Controlling unit Frequency
			Lower Limits  Airspace classification		Odd	Even	
1	2	3	4	5	6		7
<b>V679</b>	Total DIST km (NM) 9.9 (5.4)						
▲ <b>ESURI (5KM N of Elena)</b> 425828N 0255344E	GRN 137° 24.9 (13.4) 90 (300)	350°/170° 9.9 (5.4)	3000FT AMSL 500FT AGL Class C	2.2NM	↓ ↑	↓ ↑	SSR transponder and continuous two-way air-ground communication required. AVBL ABV upper limit after coordination with respective ATS unit. Gorna Tower - 133.500 MHz, 124.500 MHz, 246.825 MHz FIC Sofia: 130.600 MHz
▲ <b>ABEMU (N of Zlataritsa)</b> 430348N 0255308E	GRN 120° 17.3 (9.3) 90 (300)						
<b>Note:</b> ▲ - Compulsory △ - On- request							