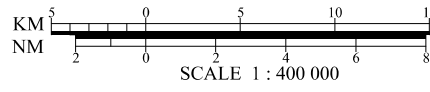
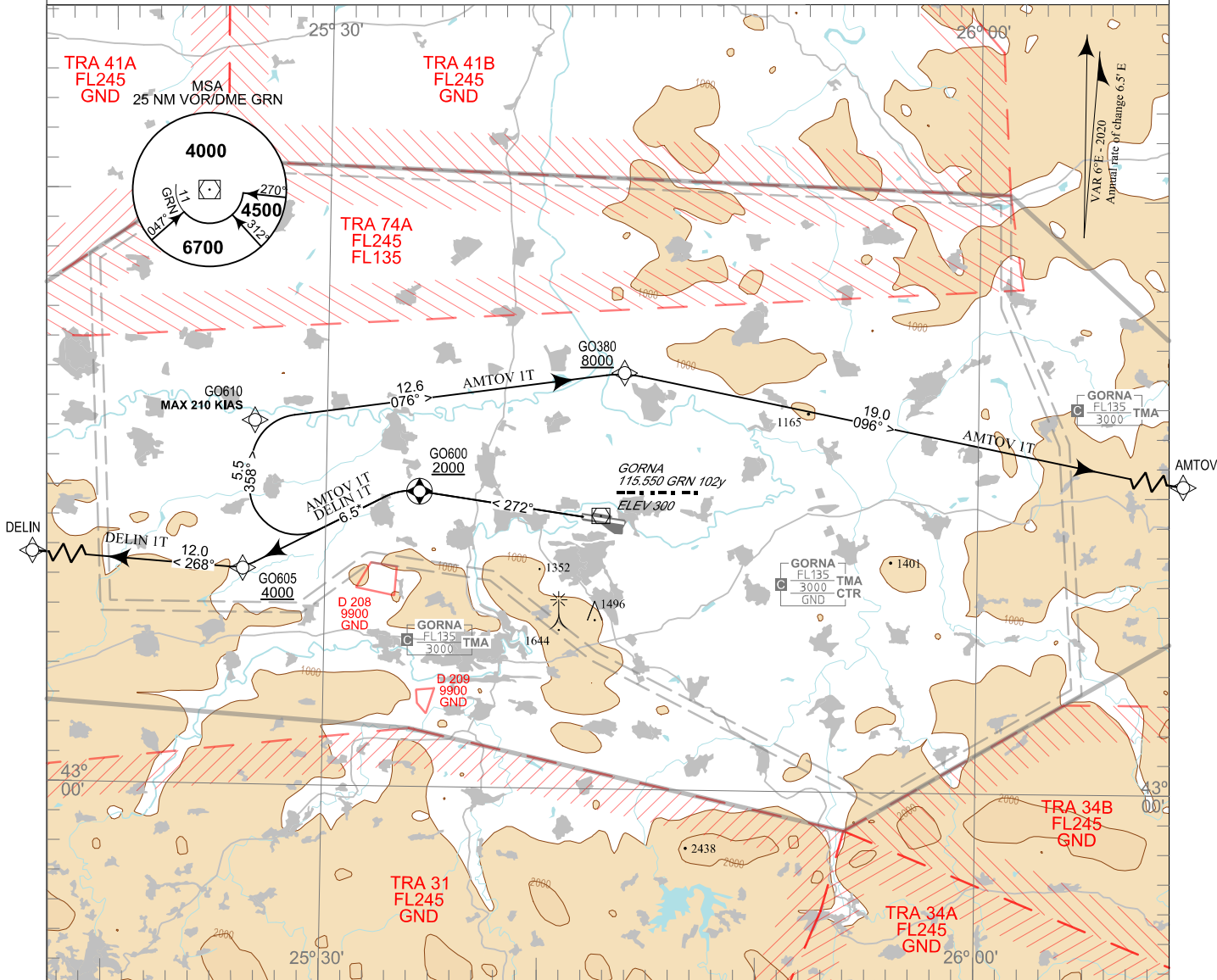


TRANSITION ALT 10500 FT TWR 133.500 ATIS 127.130
TRANSITION LEVEL BY ATC 124.500
246.825
121.500
243.000

**GORNA ORYAHOVITSA
RNAV RWY 27**

**STANDARD DEPARTURE CHART -
INSTRUMENT (SID) - ICAO**

AMTOV IT, DELIN IT



ALTITUDES (HEIGHTS) AND ELEVATIONS IN FEET
DISTANCES IN NM
Distances marked by * are approximate distances from DER

Certification:

RNAV 1 certification based on GNSS is required for the RNAV departure procedures

Non RNAV 1 ACFT:

Report "UNABLE RNAV" at first contact to ATC.
Expect OMNIDIRECTIONAL DEPARTURE and/ or instructions provided by ATC

AFTER TAKE-OFF:

Strict compliance with departure procedures is necessary. If unable to comply inform ATC in good time so that alternative clearance can be issued.

WARNING:

When given a clearance to a level higher than the specified in the SID, follow published SID profile, unless restrictions are explicitly cancelled by ATC.

ROUTES:

Follow the coding on the verso of the chart.

OMNIDIRECTIONAL DEPARTURE:

Climb straight ahead to 2300 FT.
Turn LEFT to DELIN or RIGHT to AMTOV according to FPL.
MNM climb gradient of 5.5% (344 FT/NM) required due airspace restrictions.
MAX 220 KIAS.

P/T	WPT ID	Flyover	Track MAG (GEO)	DIST NM	Turn Direction	Speed KT	ALT FT	Additional Requirements
AMTOV 1T AMTOV ONE TANGO DEPARTURE								
<i>MNM climb gradient of 5.0% (304 FT/NM) to 4000FT AMSL.</i>								
CF	GO600	Yes	272°(278.0°T)	-	Left	-	2000+	-
DF	GO605	-	-	-	Right	-	4000+	-
TF	GO610	-	358°(003.8°T)	5.5	Right	210-	-	-
TF	GO380	-	076°(082.0°T)	12.6	Right	-	8000+	-
TF	AMTOV	-	096°(101.4°T)	19.0	-	-	-	-
DELIN 1T DELIN ONE TANGO DEPARTURE								
<i>MNM climb gradient of 5.0% (304 FT/NM) to 8000FT AMSL.</i>								
CF	GO600	Yes	272°(278.0°T)	-	Left	-	2000+	-
DF	GO605	-	-	-	Right	-	4000+	-
TF	DELIN	-	268°(273.6°T)	12.0	-	-	-	-

See page LBGO AD 2 - 61.1 for waypoint coordinates