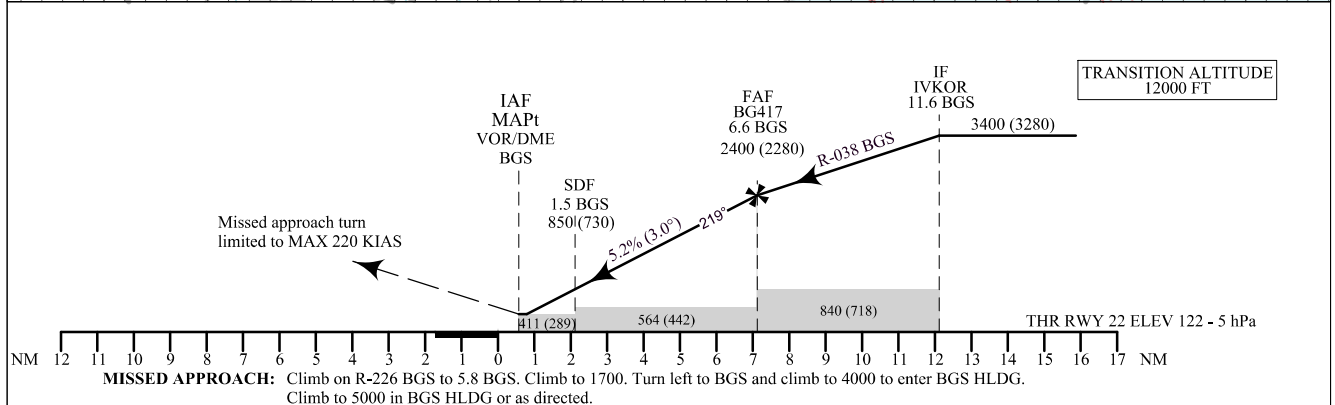
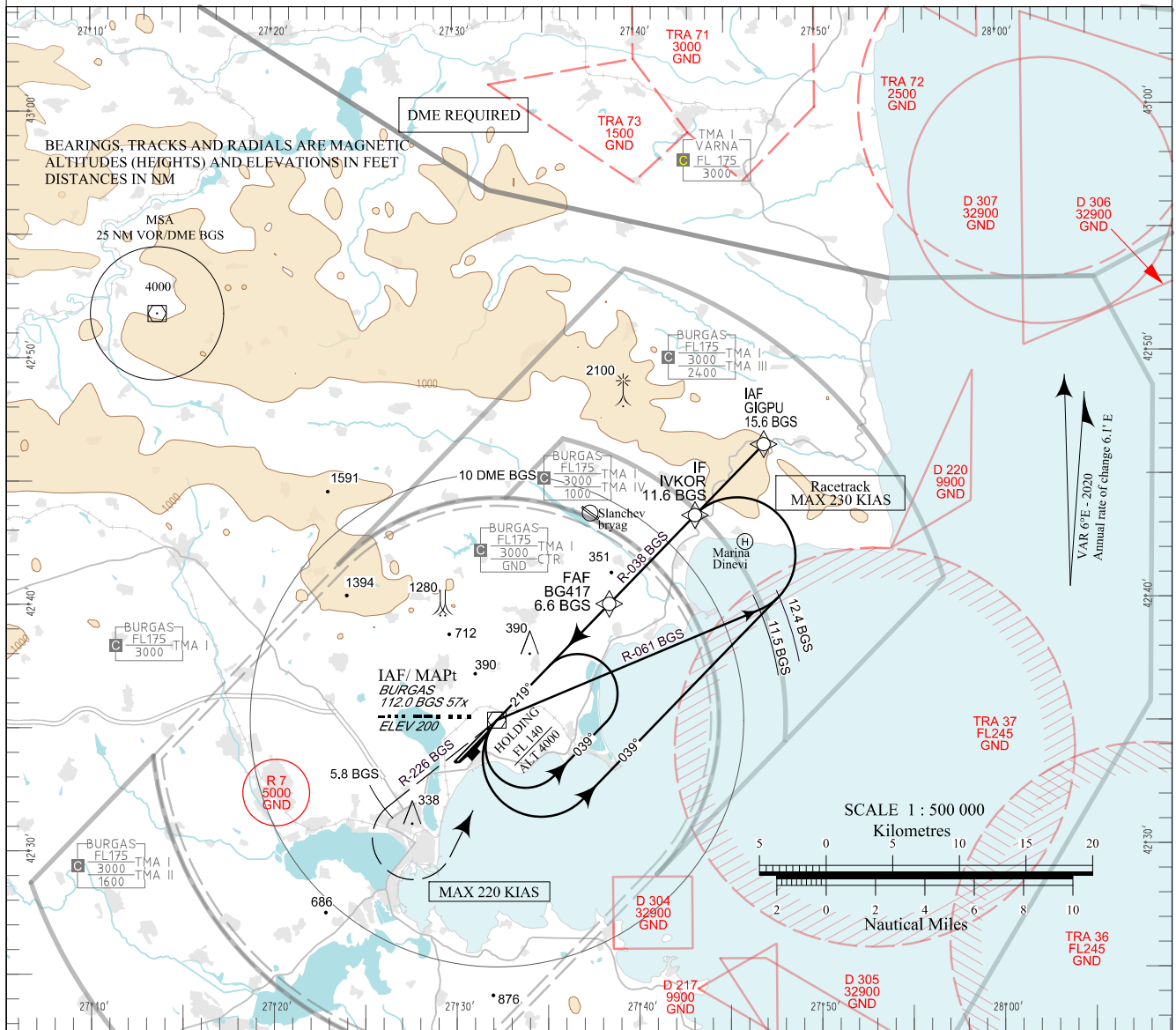


**INSTRUMENT
APPROACH
CHART - ICAO**

AERODROME ELEV 135 - 5 hPa
THR RWY 22 ELEV 122 - 5 hPa
OCH RELATED TO THR RWY 22 ELEV
CIRCLING OCH RELATED TO AD ELEV

APP 125.100 TWR 118.000 ATIS 126.980
119.650 120.000
283.925 336.400
121.500 121.500
243.000 243.000

**BURGAS
VOR
RWY 22**



OCA (OCH)		A	B	C	D	DME BGS NM / km	6.0 / 11.1	5.0 / 9.3	4.0 / 7.4	3.0 / 5.6	2.0 / 3.7	1.0 / 1.9
Straight-in Approach	m		130 (90)			DIST THR NM / km	6.6 / 12.2	5.6 / 10.3	4.6 / 8.5	3.6 / 6.6	2.6 / 4.8	1.6 / 2.9
	ft		420 (300)			ALT (HGT) m	680 (640)	585 (545)	485 (450)	390 (355)	295 (255)	195 (160)
SDF not received	m		175 (135)			ALT (HGT) ft	2230 (2110)	1910 (1790)	1600 (1470)	1280 (1160)	960 (840)	650 (530)
	ft		570 (450)									
Circling	m	185 (145)	220 (180)	350 (310)	380 (340)							
	ft	600 (470)	700 (570)	1150 (1020)	1250 (1120)							

	GS	kt	60	80	100	120	140	160	180
FAF - MAPt 6.4 NM	min:sec	6:30	4:53	3:54	3:15	2:47	2:26	2:10	
Rate of descent	ft/min	316	421	527	632	737	843	948	

Timing is not authorized for defining MAPt

See page LBBG AD 2 - 61.1 for non-RNAV fixes coordinates and other data.