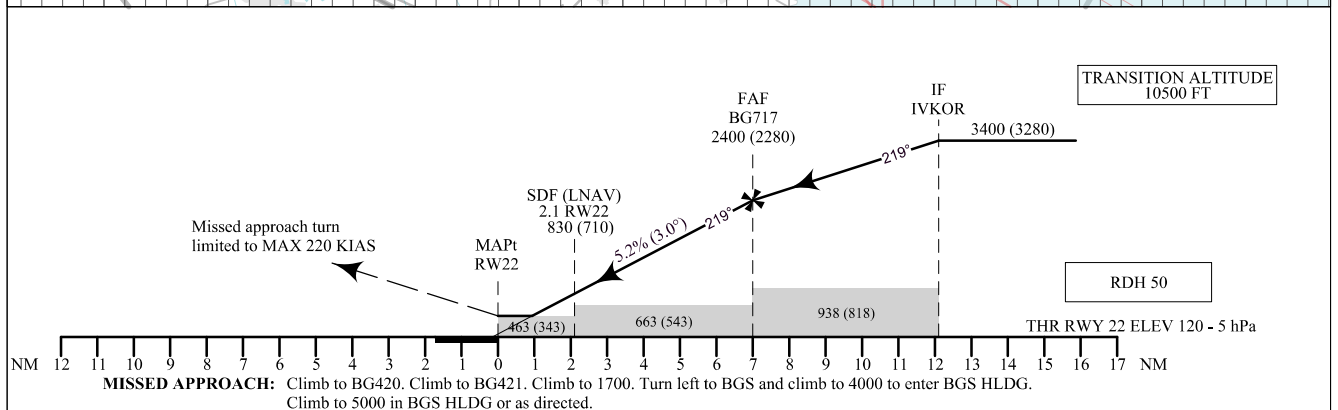
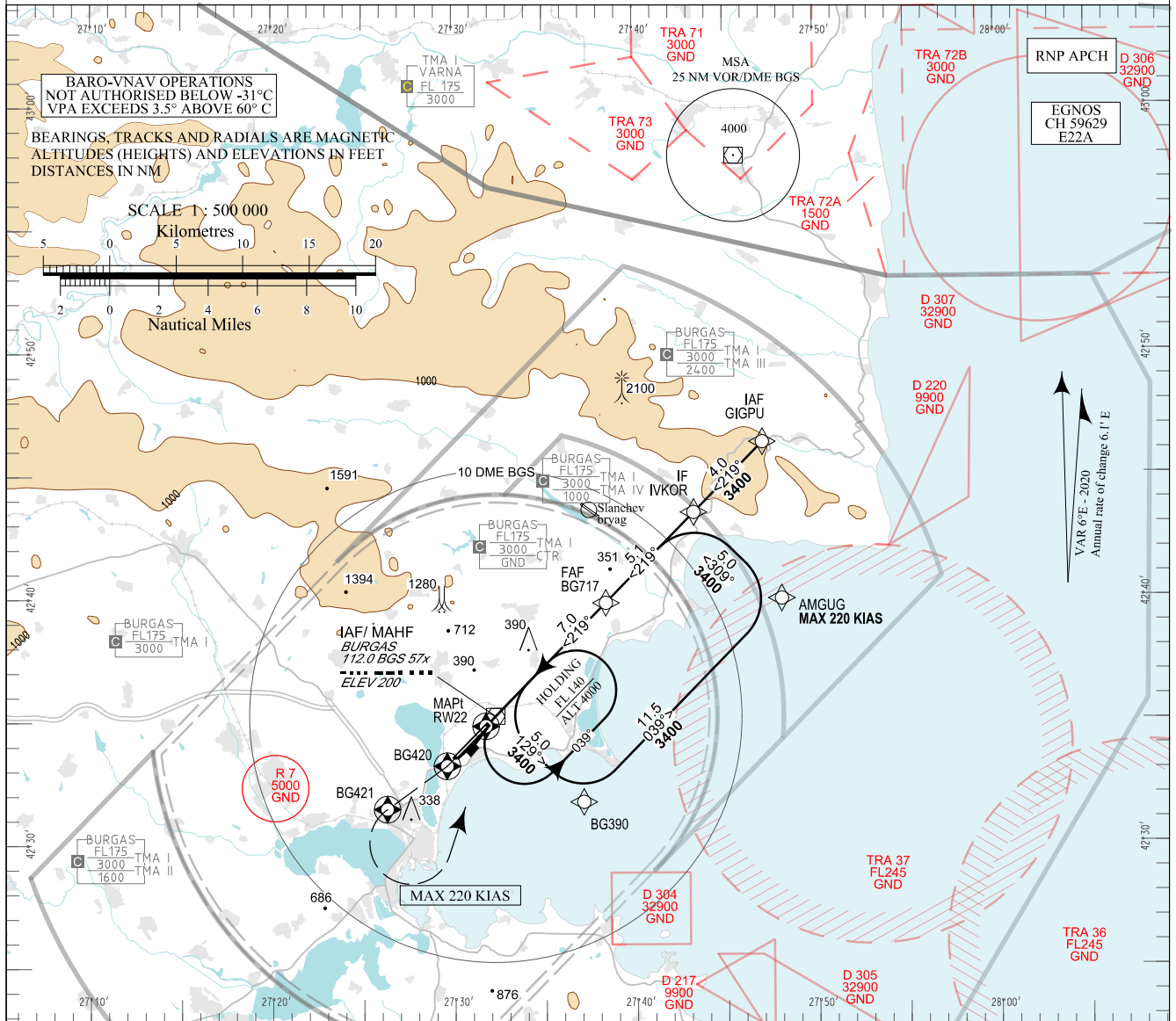


**INSTRUMENT
APPROACH
CHART - ICAO**

AERODROME ELEV 135 - 5 hPa
THR RWY 22 ELEV 120 - 5 hPa
OCH RELATED TO THR RWY 22 ELEV
CIRCLING OCH RELATED TO AD ELEV

APP 125.100 TWR 118.000 ATIS 126.980
119.650 120.000
378.350 336.400
121.500 121.500
243.000 243.000

**BURGAS
RNP
RWY 22**



MISSED APPROACH: Climb to BG420. Climb to BG421. Climb to 1700. Turn left to BGS and climb to 4000 to enter BGS HLDG. Climb to 5000 in BGS HLDG or as directed.

OCA (OCH)	A	B	C	D	DIST THR NM / km	6.0 / 11.1	5.0 / 9.3	4.0 / 7.4	3.0 / 5.6	2.0 / 3.7	1.0 / 1.9
LPV	m	106 (69)	110 (73)	112 (76)	116 (79)	635 (600)	535 (500)	440 (405)	345 (305)	245 (210)	150 (115)
	ft	348 (228)	360 (240)	368 (248)	379 (259)	2080 (1960)	1760 (1640)	1440 (1320)	1130 (1010)	810 (690)	490 (370)
LNAV/VNAV	m	110 (75)	115 (80)	115 (80)	120 (85)						
	ft	350 (230)	370 (250)	370 (250)	390 (270)						
LNAV	m	145 (105)									
	ft	470 (350)									
Circling	m	185 (145)	220 (180)	350 (310)	515 (475)						
	ft	600 (470)	700 (570)	1150 (1020)	1680 (1550)						

GS	kt	60	80	100	120	140	160	180
FAF - MAPt 7.0 NM	min:sec	7:00	5:15	4:12	3:30	3:00	2:38	2:20
Rate of descent	ft/min	318	425	531	637	743	849	955

Timing is not authorized for defining MAPt

Instrument approach procedures

P/T	WPT ID	Flyover	Track / MAG (GEO)	DIST/ NM	Turn Direction	Speed/ KT	ALT/ FT
From IAF BGS							
IF	BGS / IAF	-	-	-	-	220-	4000+
TF	BG390	-	129°(134.4°T)	5.0	Left	-	-
TF	AMGUG	-	039°(044.4°T)	11.5	Left	-	-
TF	IVKOR / IF	-	309°(314.6°T)	5.0	Left	190-	3400+
TF	BG717 / FAF	-	219°(224.5°T)	5.1	-	-	2400+
TF	RW22 / MAPt	Yes	219°(224.4°T)	7.0	-	-	-
CF	BG420	Yes	219°(224.4°T)	-	Right	-	-
DF	BG421	Yes	-	-	-	-	-
CA	-	-	229°(234.3°T)	-	Left	220-	1700+
DF	BGS / MAHF	Yes	-	-	-	-	4000+
From IAF GIGPU							
IF	GIGPU/ IAF	-	-	-	-	220-	4000+
TF	IVKOR / IF	-	219°(224.6°T)	4.0	-	190-	3400+
TF	BG717 / FAF	-	219°(224.5°T)	5.1	-	-	2400+
TF	RW22 / MAPt	Yes	219°(224.4°T)	7.0	-	-	-
CF	BG420	Yes	219°(224.4°T)	-	Right	-	-
DF	BG421	Yes	-	-	-	-	-
CA	-	-	229°(234.3°T)	-	Left	220-	1700+
DF	BGS / MAHF	Yes	-	-	-	-	4000+

Holding

P/T	WPT ID	Flyover	Track / MAG (GEO)	Time	Turn Direction	Speed/ KT	ALT/ FT
HM	BGS	Yes	219°(224.4°T)	1min	Left	-	4000+

See pages LBBG AD 2 - 61.1 and LBBG AD 2 - 61.2 for waypoint coordinates

SBAS FAS Data Block Burgas RNP RWY 22

Data Field	Data Value
Operation Type	0
SBAS Provider	1 (EGNOS)
Airport Identifier	LBBG
Runway	22
Runway Letter	0 (None)
Approach Performance Designator	0
Route Indicator	
Reference Path Data Selector	0
Reference Path Identifier	E22A
LTP/FTP Latitude	423449.5580N
LTP/FTP Longitude	0273143.9890E
LTP/FTP Ellipsoidal Height (m)	74.8
FPAP Latitude	423333.1680N
Delta FPAP Latitude (seconds)	-76.3900
FPAP Longitude	0273002.8540E
Delta FPAP Longitude (seconds)	-101.1350
Threshold Crossing Height (ft)	50.0
TCH Units Selector	0 (feet)
Glidepath Angle (degrees)	3.00
Course Width (m)	105.00
Length Offset (m)	96
HAL (m)	40.0
VAL (m)	50.0
CRC Value	788EFC22
Data Block Hexadecimal Representation	10 07 02 02 0C 16 00 00 01 32 32 05 AC 06 46 12 EA 69 D0 0B EC 16 34 AB FD E2 E9 FC F4 01 2C 01 64 0C C8 FA 78 8E FC 22

Required Additional Data (not CRC wrapped)

Data Field	Data Value
ICAO Code	LB
LTP/FTP Orthometric Height (m)	36.6

INTENTIONALLY LEFT BLANK