

**INSTRUMENT
APPROACH
CHART - ICAO**

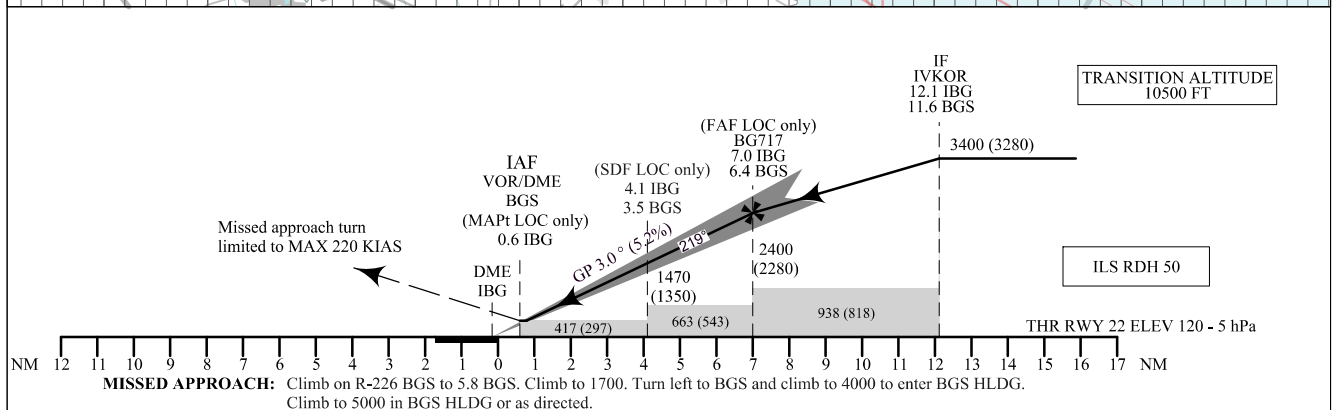
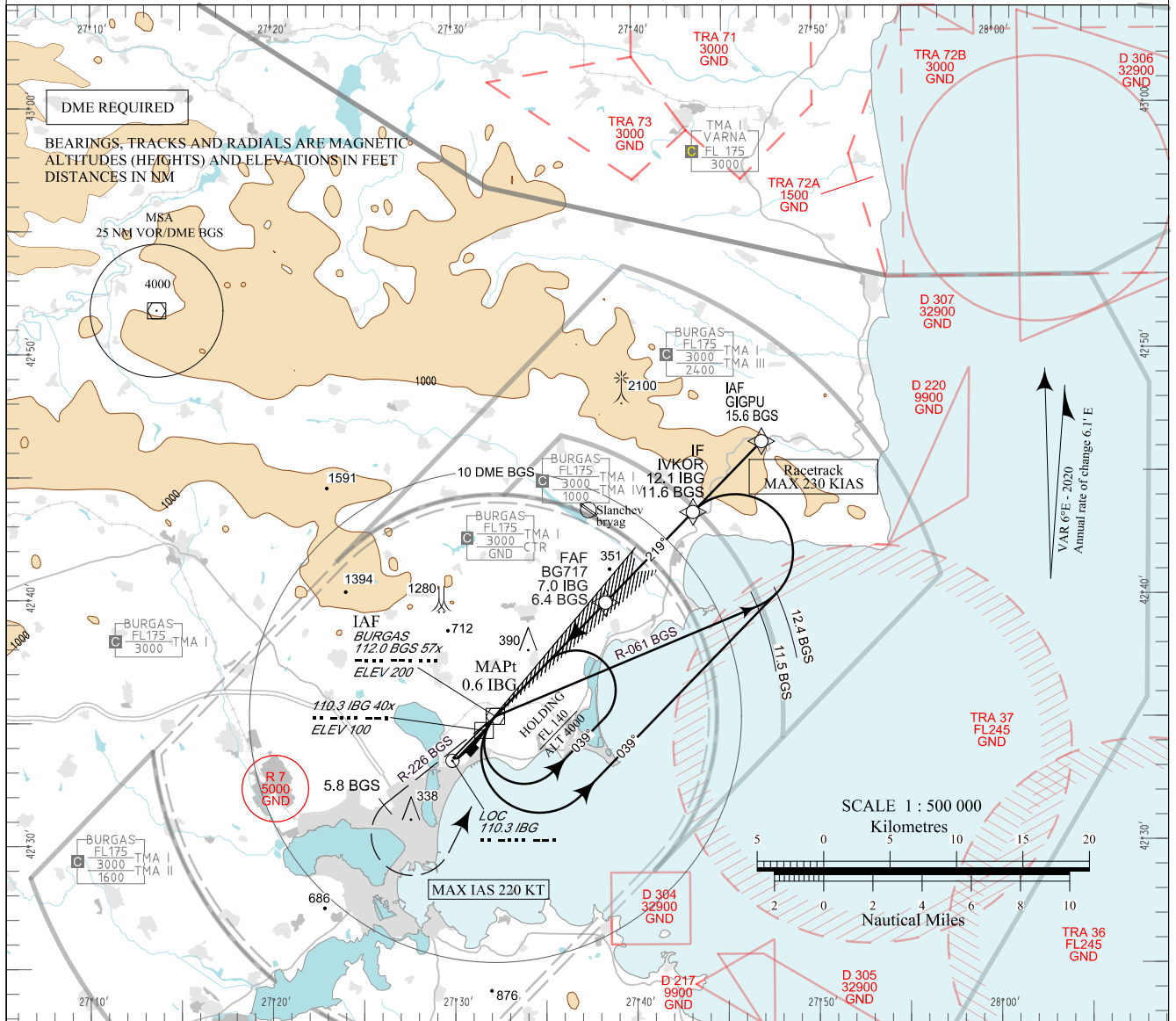
AERODROME ELEV 135 - 5 hPa
THR RWY 22 ELEV 120 - 5 hPa
OCH RELATED TO THR RWY 22 ELEV
CIRCLING OCH RELATED TO AD ELEV

APP 125.100
119.650
378.350
121.500
243.000

TWR 118.000
120.000
336.400
121.500
243.000

ATIS 126.980

**BURGAS
ILS or LOC
RWY 22**



OCA (OCH)		A	B	C	D	DME IBG NM / km	6.0 / 11.1	5.0 / 9.3	4.0 / 7.4	3.0 / 5.6	2.0 / 3.7	1.0 / 1.9
Straight-in Approach	CAT I	m	94 (57)	97 (61)	100 (63)	103 (66)	5.4 / 10.1	4.4 / 8.2	3.4 / 6.4	2.4 / 4.5	1.4 / 2.7	0.4 / 0.8
		ft	307 (187)	319 (199)	327 (207)	338 (218)	635 (600)	535 (500)	440 (405)	345 (305)	245 (210)	150 (115)
	LOC only	m		130 (95)			2080 (1960)	1760 (1640)	1440 (1320)	1130 (1010)	810 (690)	490 (370)
		ft		420 (300)								
Circling	SDF not received	m		205 (170)								
		ft		670 (550)								
Circling		m	185 (145)	220 (180)	350 (310)	515 (475)						
		ft	600 (470)	700 (570)	1150 (1020)	1680 (1550)						

GS	kt	60	80	100	120	140	160	180
FAF - MAPt 6.4 NM	min:sec	6:26	4:49	3:52	3:13	2:45	2:25	2:09
Rate of descent	ft/min	318	425	531	637	743	849	955

Timing is not authorized for defining MAPt

| See pages LBBG AD 2 - 61.1 and LBBG AD 2 - 61.2 for non-RNAV fixes coordinates and other data.