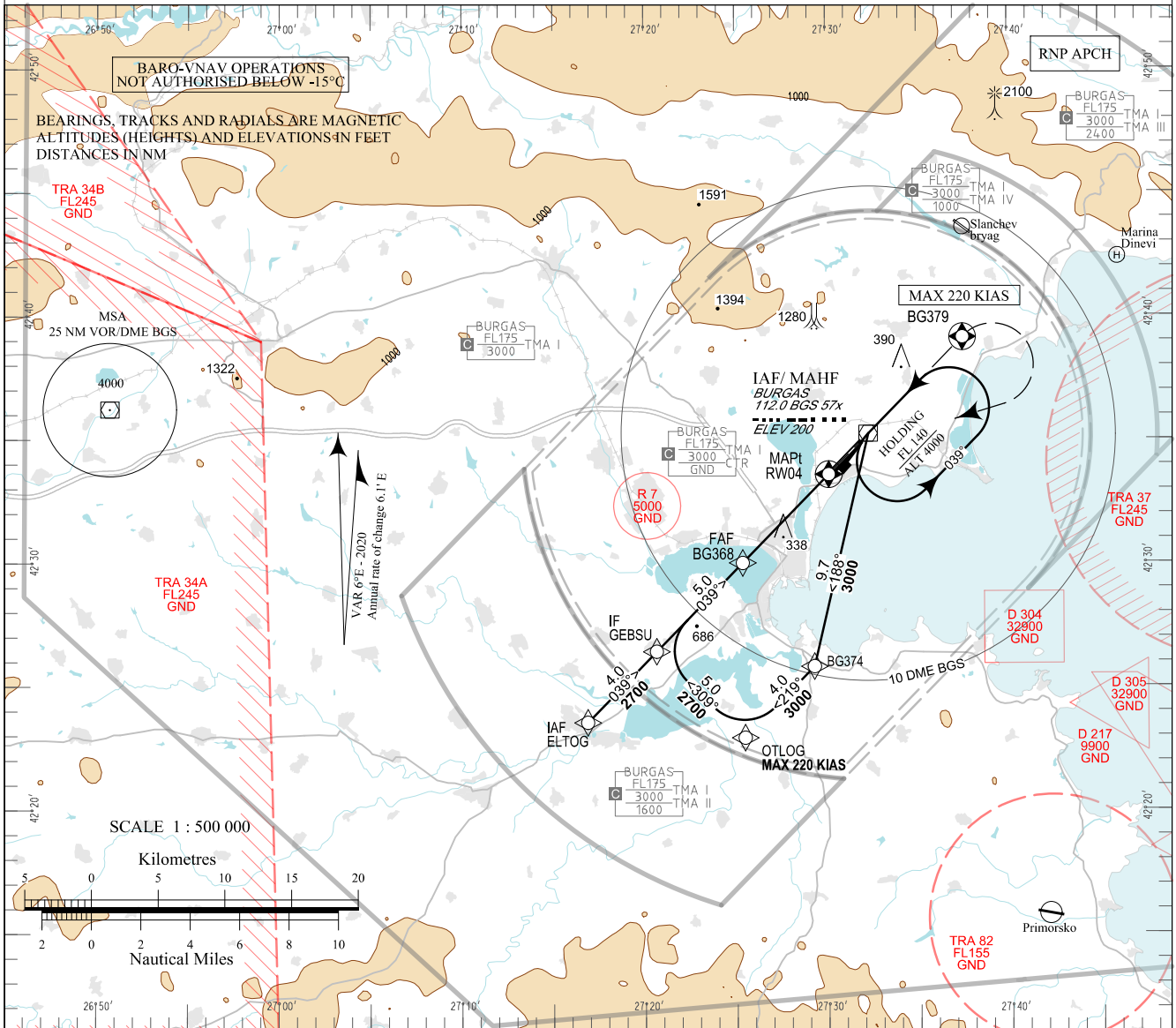


**INSTRUMENT
APPROACH
CHART - ICAO**

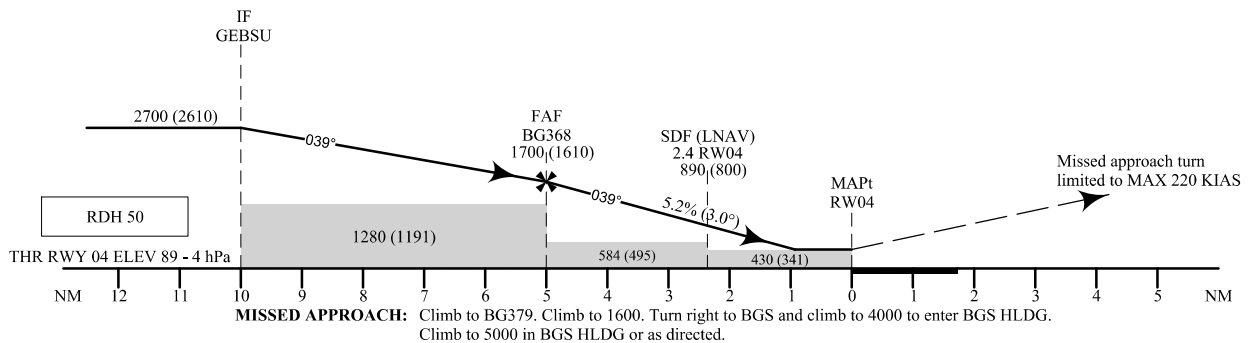
AERODROME ELEV 135 - 5 hPa
THR RWY 04 ELEV 89 - 4 hPa
OCH RELATED TO THR RWY 04 ELEV 121.500
CIRCLING OCH RELATED TO AD ELEV 243.000

APP 125.100 TWR 118.000 ATIS 126.980
119.650 120.000
283.925 336.400
121.500 121.500
243.000 243.000

**BURGAS
RNP
RWY 04**



TRANSITION ALTITUDE
12000 FT



OCA (OCH)		A	B	C	D
LNAV/VNAV	m	105 (80)		110 (90)	120 (100)
	ft	340 (260)		370 (290)	390 (310)
LNAV	m	135 (110)		140 (115)	145 (120)
	ft	440 (360)		450 (370)	470 (390)
Circling	m	185 (145)	220 (180)	350 (310)	380 (340)
	ft	600 (470)	700 (570)	1150 (1020)	1250 (1120)

DIST THR NM / km	4.0 / 7.4	3.0 / 5.6	2.0 / 3.7
ALT (HGT) m	420 (395)	325 (300)	230 (200)
ALT (HGT) ft	1380 (1300)	1070 (980)	750 (660)

GS	kt	60	80	100	120	140	160	180
FAF - MAPt 5.0 NM	min:sec	5:00	3:45	3:00	2:30	2:09	1:53	1:40
Rate of descent	ft/min	316	421	527	632	737	843	948

Timing is not authorized for defining MAPt

Instrument approach procedures

P/T	WPT ID	Flyover	Track / MAG (GEO)	DIST/ NM	Turn Direction	Speed/ KT	ALT/ FT
From IAF BGS							
IF	BGS / IAF	-	-	-	-	-	-
TF	BG374	-	188°(193.3°T)	9.7	Right	-	-
TF	OTLOG	-	219°(224.4°T)	4.0	Right	220-	3000+
TF	GEBSU / IF	-	309°(314.3°T)	5.0	Right	190-	2700+
TF	BG368 / FAF	-	039°(044.3°T)	5.0	-	-	1700+
TF	RW04 / MAPt	Yes	039°(044.3°T)	5.0	-	-	-
CF	BG379	Yes	039°(044.4°T)	-	-	-	-
CA	-	-	039°(044.4°T)	-	Right	220-	1600+
DF	BGS / MAHF	Yes	-	-	-	-	4000+
From IAF ELTOG							
IF	ELTOG / IAF	-	-	-	-	220-	4000+
TF	GEBSU / IF	-	039°(044.2°T)	4.0	-	190-	2700+
TF	BG368 / FAF	-	039°(044.3°T)	5.0	-	-	1700+
TF	RW04 / MAPt	Yes	039°(044.3°T)	5.0	-	-	-
CF	BG379	Yes	039°(044.4°T)	-	-	-	-
CA	-	-	039°(044.4°T)	-	Right	220-	1600+
DF	BGS / MAHF	Yes	-	-	-	-	4000+

Holding

P/T	WPT ID	Flyover	Track / MAG (GEO)	Time	Turn Direction	Speed/ KT	ALT/ FT
HM	BGS	Yes	219°(224.4°T)	1min	Left	-	4000+

See page LBBG AD 2 - 61.1 for waypoint coordinates