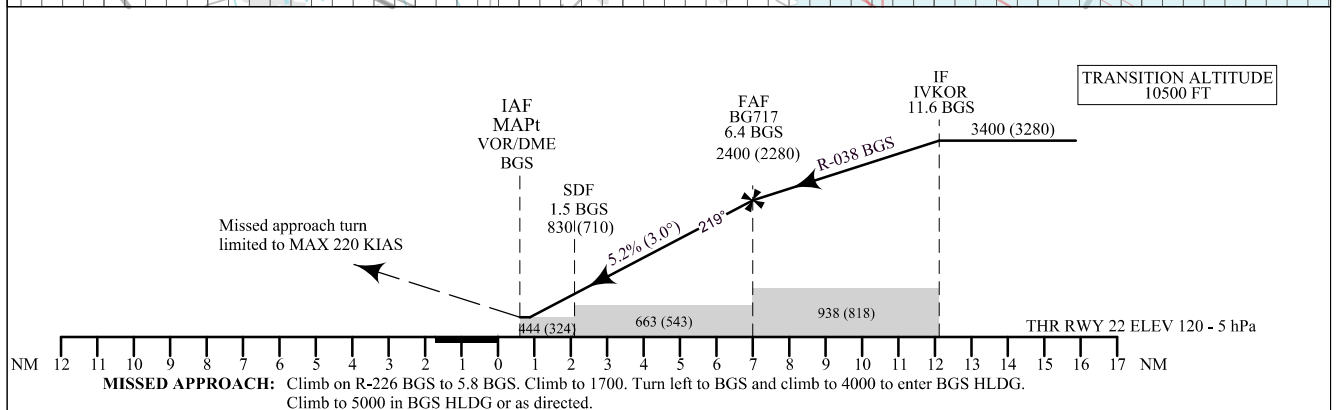
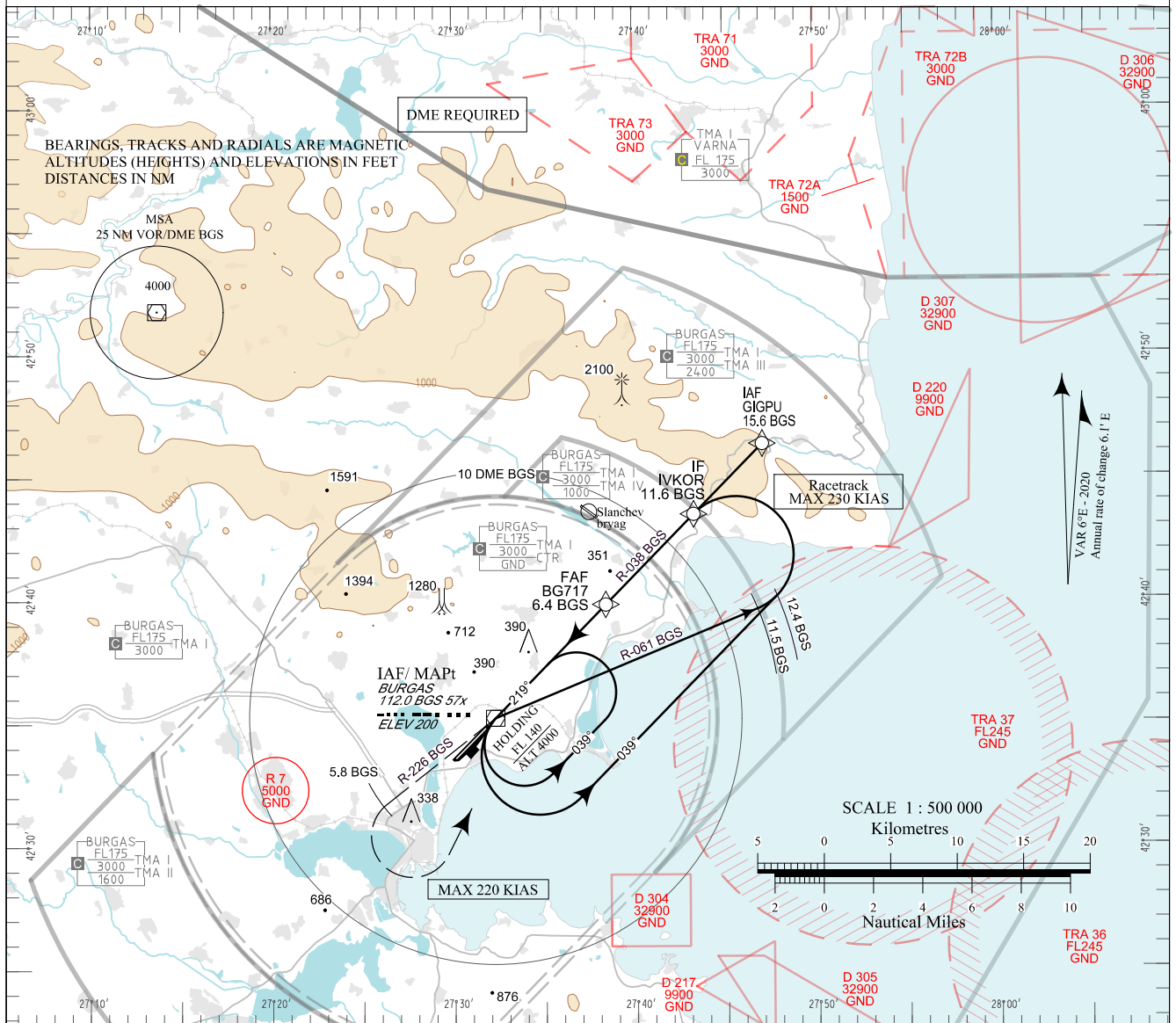


**INSTRUMENT
APPROACH
CHART - ICAO**

AERODROME ELEV 135 - 5 hPa
THR RWY 22 ELEV 120 - 5 hPa
OCH RELATED TO THR RWY 22 ELEV
CIRCLING OCH RELATED TO AD ELEV

APP 125.100 TWR 118.000 ATIS 126.980
119.650 120.000
378.350 336.400
121.500 121.500
243.000 243.000

**BURGAS
VOR
RWY 22**



| OCA (OCH) | | A | B | C | D | DME BGS NM / km | 6.0 / 11.1 | 5.0 / 9.3 | 4.0 / 7.4 | 3.0 / 5.6 | 2.0 / 3.7 | 1.0 / 1.9 |
|----------------------|----|-----------|-----------|-------------|-------------|------------------|-------------|-------------|-------------|-------------|-----------|-----------|
| Straight-in Approach | m | | 140 (100) | | | DIST THR NM / km | 6.6 / 12.2 | 5.6 / 10.3 | 4.6 / 8.5 | 3.6 / 6.6 | 2.6 / 4.8 | 1.6 / 2.9 |
| | ft | | 450 (330) | | | ALT (HGT) m | 690 (655) | 595 (555) | 495 (460) | 400 (360) | 300 (265) | 205 (170) |
| SDF not received | m | | 205 (170) | | | ALT (HGT) ft | 2260 (2140) | 1940 (1820) | 1630 (1510) | 1310 (1190) | 990 (870) | 670 (550) |
| | ft | | 670 (550) | | | | | | | | | |
| Circling | m | 185 (145) | 220 (180) | 350 (310) | 515 (475) | | | | | | | |
| | ft | 600 (470) | 700 (570) | 1150 (1020) | 1680 (1550) | | | | | | | |

| GS | kt | 60 | 80 | 100 | 120 | 140 | 160 | 180 |
|-------------------|---------|------|------|------|------|------|------|------|
| FAF - MAPt 6.4 NM | min:sec | 6:26 | 4:49 | 3:52 | 3:13 | 2:45 | 2:25 | 2:09 |
| Rate of descent | ft/min | 318 | 425 | 531 | 637 | 743 | 849 | 955 |

Timing is not authorized for defining MAPt

| See pages LBBG AD 2 - 61.1 and LBBG AD 2 - 61.2 for non-RNAV fixes coordinates and other data.