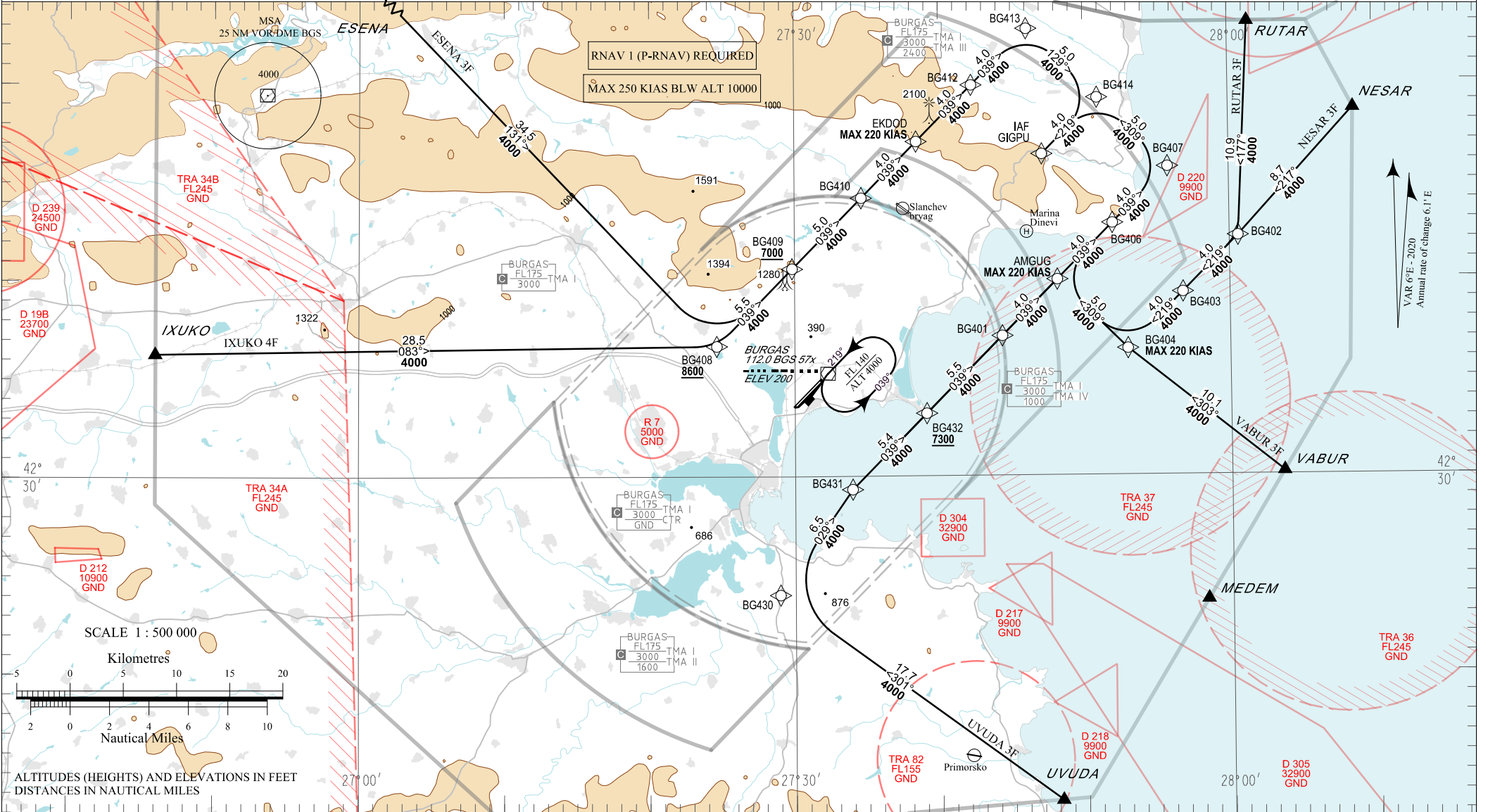


**STANDARD ARRIVAL CHART - INSTRUMENT
(STAR) - ICAO**

TRANSITION ALT 12000 FT
TRANSITION HGT (11865) FT
TRANSITION LEVEL BY ATC

APP	125.100	283.925	TWR	118.000	336.400	ATIS	126.980
	119.650			120.000			
	121.500	243.000		121.500	243.000		

BURGAS
RNAV RWY 22
ESENA 3F, IXUKO 4F, NESAR 3F, RUTAR 3F, UVUDA 3F, VABUR 3F



P/T	WPT ID	Flyover	Track MAG (GEO)	DIST NM	Turn Direction	Speed KT	ALT FT
ESENA 3F ESENA THREE FOXTROT ARRIVAL							
IF	ESENA	-	-	-	-	-	-
TF	BG408	-	131°(136.3°T)	34.5	Left	250-	8600+
TF	BG409	-	039°(044.3°T)	5.5	-	-	7000+
TF	BG410	-	039°(044.4°T)	5.0	-	-	-
TF	EKDOD	-	039°(044.5°T)	4.0	-	220-	-
TF	BG412	-	039°(044.4°T)	4.0	-	-	-
TF	BG413	-	039°(044.5°T)	4.0	Right	-	-
TF	BG414	-	129°(134.6°T)	5.0	Right	-	-
TF	GIGPU / IAF	-	219°(224.6°T)	4.0	-	-	4000+
IXUKO 4F IXUKO FOUR FOXTROT ARRIVAL							
IF	IXUKO	-	-	-	-	-	-
TF	BG408	-	083°(089.0°T)	28.5	Left	250-	8600+
TF	BG409	-	039°(044.3°T)	5.5	-	-	7000+
TF	BG410	-	039°(044.4°T)	5.0	-	-	-
TF	EKDOD	-	039°(044.5°T)	4.0	-	220-	-
TF	BG412	-	039°(044.4°T)	4.0	-	-	-
TF	BG413	-	039°(044.5°T)	4.0	Right	-	-
TF	BG414	-	129°(134.6°T)	5.0	Right	-	-
TF	GIGPU / IAF	-	219°(224.6°T)	4.0	-	-	4000+
NESAR 3F NESAR THREE FOXTROT ARRIVAL							
IF	NESAR	-	-	-	-	-	-
TF	BG402	-	217°(222.5°T)	8.7	Right	-	-
TF	BG403	-	219°(224.7°T)	4.0	-	-	-
TF	BG404	-	219°(224.7°T)	4.0	Right	220-	-
TF	AMGUG	-	309°(314.6°T)	5.0	Right	-	-
TF	BG406	-	039°(044.6°T)	4.0	-	-	-
TF	BG407	-	039°(044.6°T)	4.0	Left	-	-
TF	BG414	-	309°(314.7°T)	5.0	Left	-	-
TF	GIGPU / IAF	-	219°(224.6°T)	4.0	-	-	4000+

P/T	WPT ID	Flyover	Track MAG (GEO)	DIST NM	Turn Direction	Speed KT	ALT FT
RUTAR 3F RUTAR THREE FOXTROT ARRIVAL							
IF	RUTAR	-	-	-	-	-	-
TF	BG402	-	177°(182.8°T)	10.9	Right	-	-
TF	BG403	-	219°(224.7°T)	4.0	-	-	-
TF	BG404	-	219°(224.7°T)	4.0	Right	220-	-
TF	AMGUG	-	309°(314.6°T)	5.0	Right	-	-
TF	BG406	-	039°(044.6°T)	4.0	-	-	-
TF	BG407	-	039°(044.6°T)	4.0	Left	-	-
TF	BG414	-	309°(314.7°T)	5.0	Left	-	-
TF	GIGPU / IAF	-	219°(224.6°T)	4.0	-	-	4000+
UVUDA 3F UVUDA THREE FOXTROT ARRIVAL							
IF	UVUDA	-	-	-	-	-	-
TF	BG430	-	301°(306.3°T)	17.7	Right	250-	-
TF	BG431	-	029°(034.5°T)	6.5	Right	-	-
TF	BG432	-	039°(044.4°T)	5.4	-	-	7300+
TF	BG401	-	039°(044.5°T)	5.5	-	-	-
TF	AMGUG	-	039°(044.5°T)	4.0	-	220-	-
TF	BG406	-	039°(044.6°T)	4.0	-	-	-
TF	BG407	-	039°(044.6°T)	4.0	Left	-	-
TF	BG414	-	309°(314.7°T)	5.0	Left	-	-
TF	GIGPU / IAF	-	219°(224.6°T)	4.0	-	-	4000+
VABUR 3F VABUR THREE FOXTROT ARRIVAL							
IF	VABUR	-	-	-	-	-	-
TF	BG404	-	303°(308.5°T)	10.1	Right	-	-
TF	AMGUG	-	309°(314.6°T)	5.0	Right	220-	-
TF	BG406	-	039°(044.6°T)	4.0	-	-	-
TF	BG407	-	039°(044.6°T)	4.0	Left	-	-
TF	BG414	-	309°(314.7°T)	5.0	Left	-	-
TF	GIGPU / IAF	-	219°(224.6°T)	4.0	-	-	4000+

See page LBBG AD 2 - 61.1 for waypoint coordinates

INTENTIONALLY LEFT BLANK