

**STANDARD ARRIVAL CHART - INSTRUMENT
(STAR) - ICAO**

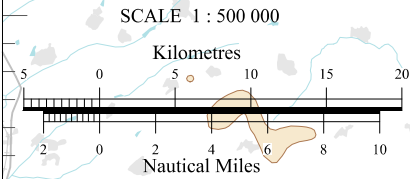
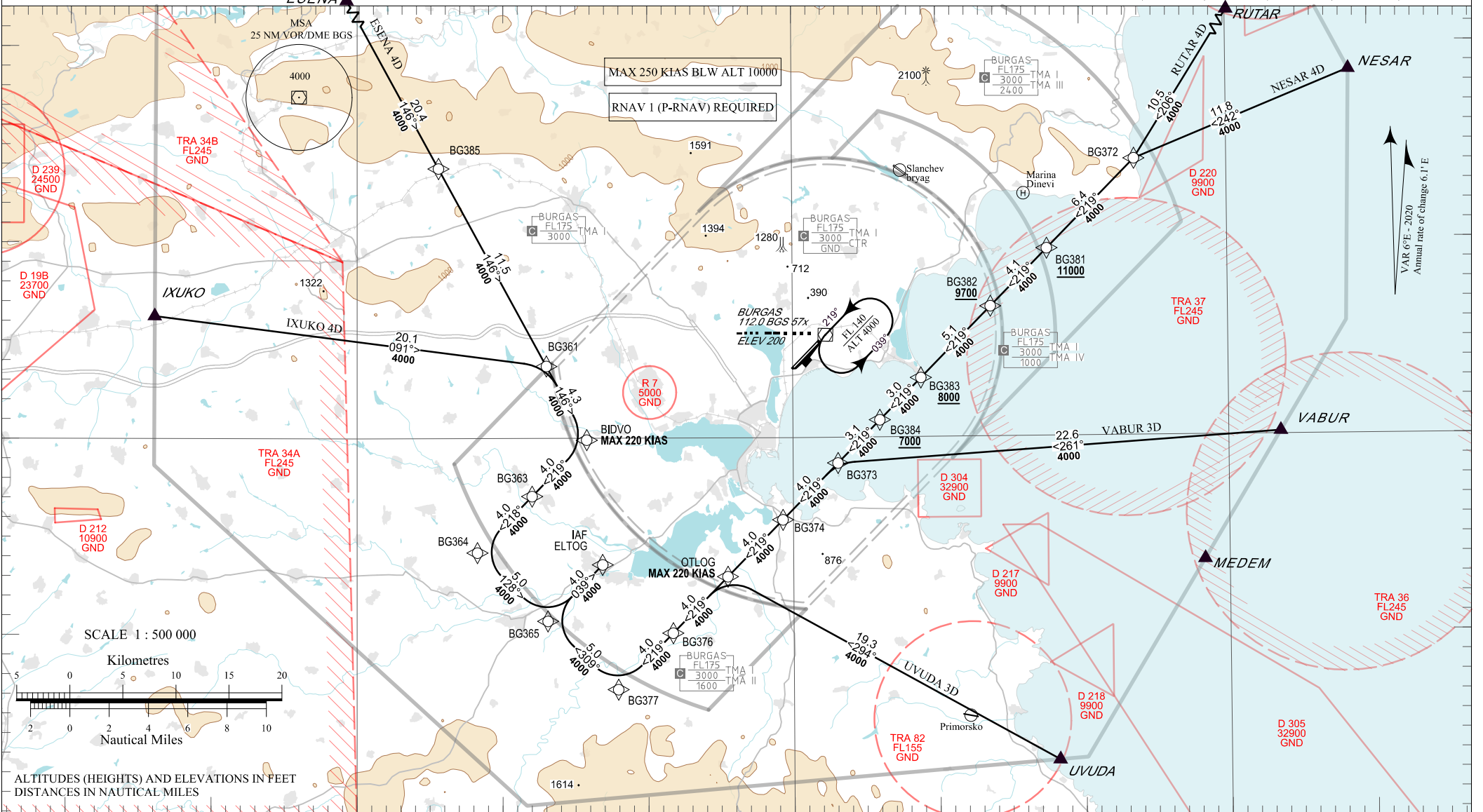
TRANSITION ALT 12000 FT
TRANSITION HGT (11865) FT
TRANSITION LEVEL BY ATC

APP 125.100 283.925 TWR 118.000 336.400 ATIS 126.980

121.500 243.000 121.500 243.000

**BURGAS
RNAV RWY 04**

ESENA 4D, IXUKO 4D, NESAR 4D, RUTAR 4D, UVUDA 3D, VABUR 3D



ALTITUDES (HEIGHTS) AND ELEVATIONS IN FEET
DISTANCES IN NAUTICAL MILES

P/T	WPT ID	Flyover	Track MAG (GEO)	DIST NM	Turn Direction	Speed KT	ALT FT
ESENA 4D ESENA FOUR DELTA ARRIVAL							
IF	ESENA	-	-	-	-	-	-
TF	BG385	-	146°(151.3°T)	20.4	-	250-	-
TF	BG361	-	146°(151.4°T)	11.5	-	-	-
TF	BIDVO	-	146°(151.5°T)	4.3	Right	220-	-
TF	BG363	-	219°(224.2°T)	4.0	-	-	-
TF	BG364	-	218°(224.2°T)	4.0	Left	-	-
TF	BG365	-	128°(134.1°T)	5.0	Left	-	-
TF	ELTOG / IAF	-	039°(044.2°T)	4.0	-	-	4000+
IXUKO 4D IXUKO FOUR DELTA ARRIVAL							
IF	IXUKO	-	-	-	-	-	-
TF	BG361	-	091°(097.2°T)	20.1	Right	-	-
TF	BIDVO	-	146°(151.5°T)	4.3	Right	220-	-
TF	BG363	-	219°(224.2°T)	4.0	-	-	-
TF	BG364	-	218°(224.2°T)	4.0	Left	-	-
TF	BG365	-	128°(134.1°T)	5.0	Left	-	-
TF	ELTOG / IAF	-	039°(044.2°T)	4.0	-	-	4000+
NESAR 4D NESAR FOUR DELTA ARRIVAL							
IF	NESAR	-	-	-	-	-	-
TF	BG372	-	242°(247.9°T)	11.8	Left	-	-
TF	BG381	-	219°(224.6°T)	6.4	-	-	11000+
TF	BG382	-	219°(224.6°T)	4.1	-	-	9700+
TF	BG383	-	219°(224.5°T)	5.1	-	-	8000+
TF	BG384	-	219°(224.5°T)	3.0	-	-	7000+
TF	BG373	-	219°(224.4°T)	3.1	-	250-	-
TF	BG374	-	219°(224.4°T)	4.0	-	-	-
TF	OTLOG	-	219°(224.4°T)	4.0	-	220-	-
TF	BG376	-	219°(224.3°T)	4.0	-	-	-
TF	BG377	-	219°(224.3°T)	4.0	Right	-	-
TF	BG365	-	309°(314.2°T)	5.0	Right	-	-
TF	ELTOG / IAF	-	039°(044.2°T)	4.0	-	-	4000+

P/T	WPT ID	Flyover	Track MAG (GEO)	DIST NM	Turn Direction	Speed KT	ALT FT
RUTAR 4D RUTAR FOUR DELTA ARRIVAL							
IF	RUTAR	-	-	-	-	-	-
TF	BG372	-	206°(212.2°T)	10.5	Right	-	-
TF	BG381	-	219°(224.6°T)	6.4	-	-	11000+
TF	BG382	-	219°(224.6°T)	4.1	-	-	9700+
TF	BG383	-	219°(224.5°T)	5.1	-	-	8000+
TF	BG384	-	219°(224.5°T)	3.0	-	-	7000+
TF	BG373	-	219°(224.4°T)	3.1	-	250-	-
TF	BG374	-	219°(224.4°T)	4.0	-	-	-
TF	OTLOG	-	219°(224.3°T)	4.0	-	220-	-
TF	BG376	-	219°(224.3°T)	4.0	-	-	-
TF	BG377	-	219°(224.3°T)	4.0	Right	-	-
TF	BG365	-	309°(314.2°T)	5.0	Right	-	-
TF	ELTOG / IAF	-	039°(044.2°T)	4.0	-	-	4000+
UVUDA 3D UVUDA THREE DELTA ARRIVAL							
IF	UVUDA	-	-	-	-	-	-
TF	OTLOG	-	294°(299.3°T)	19.3	Left	220-	-
TF	BG376	-	219°(224.3°T)	4.0	-	-	-
TF	BG377	-	219°(224.3°T)	4.0	Right	-	-
TF	BG365	-	309°(314.2°T)	5.0	Right	-	-
TF	ELTOG / IAF	-	039°(044.2°T)	4.0	-	-	4000+
VABUR 3D VABUR THREE DELTA ARRIVAL							
IF	VABUR	-	-	-	-	-	-
TF	BG373	-	261°(266.4°T)	22.6	Left	250-	-
TF	BG374	-	219°(224.4°T)	4.0	-	-	-
TF	OTLOG	-	219°(224.3°T)	4.0	-	220-	-
TF	BG376	-	219°(224.3°T)	4.0	-	-	-
TF	BG377	-	219°(224.3°T)	4.0	Right	-	-
TF	BG365	-	309°(314.2°T)	5.0	Right	-	-
TF	ELTOG / IAF	-	039°(044.2°T)	4.0	-	-	4000+

See page LBBG AD 2 - 61.1 for waypoint coordinates

INTENTIONALLY LEFT BLANK