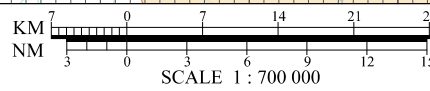
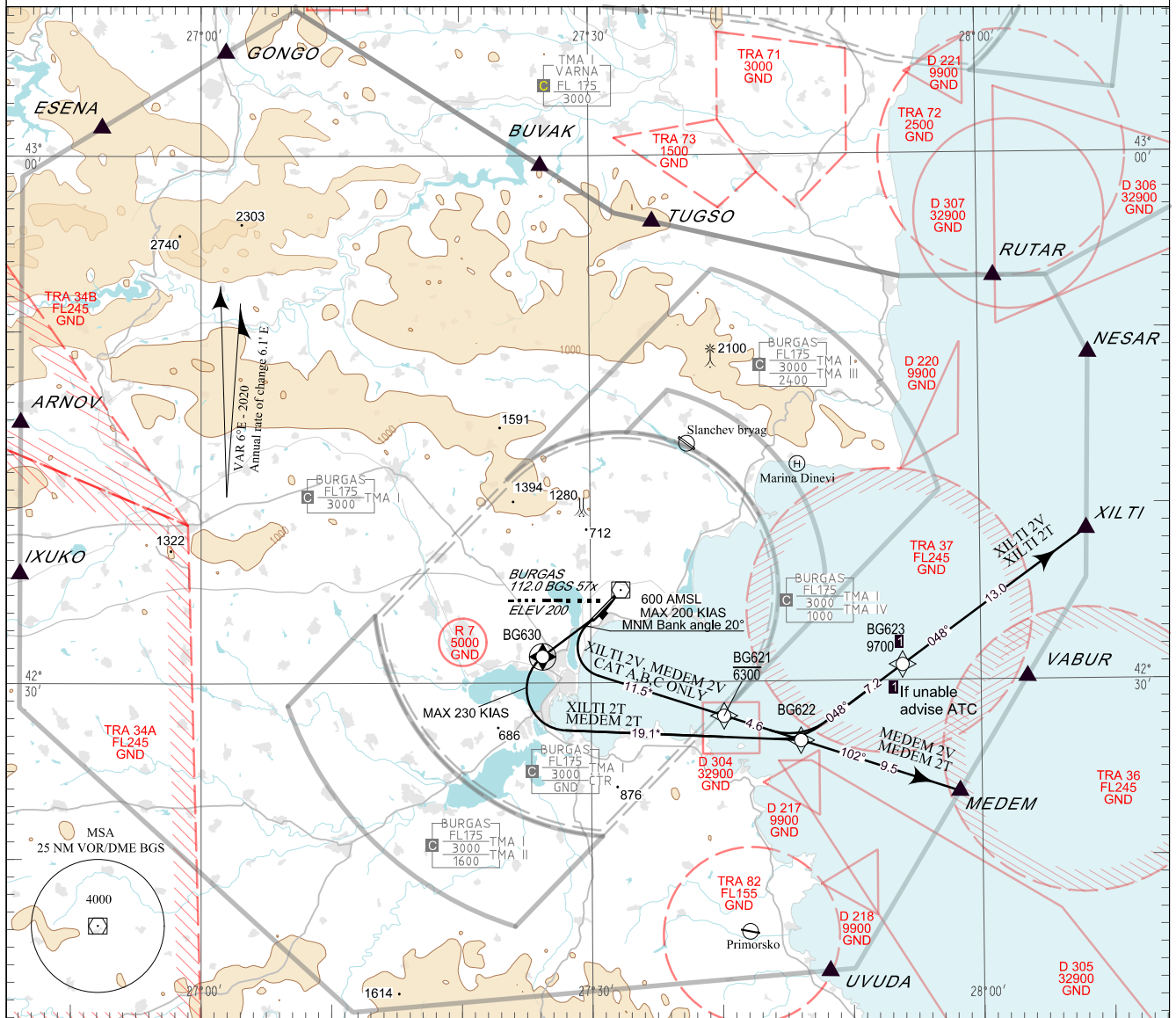


**STANDARD DEPARTURE CHART -
INSTRUMENT (SID) - ICAO**

TRANSITION ALT 12000 FT	APP 125.100	TWR 118.000	ATIS 126.980
TRANSITION HGT (11865) FT	119.650	120.000	
TRANSITION LEVEL BY ATC	283.925	336.400	
	121.500	121.500	
	243.000	243.000	

BURGAS
RNAV RWY 22 EAST
MEDEM 2V, MEDEM 2T,
XILTI 2V, XILTI 2T



BEARINGS, TRACKS AND RADIALS ARE MAGNETIC
ALTITUDES (HEIGHTS) AND ELEVATIONS IN FEET
DISTANCES IN NM

Certification:

RNAV-1 (P-RNAV) certification based on GNSS is required for the RNAV departure procedures

Non RNAV 1 ACFT:

Report "UNABLE RNAV" at first contact to ATC. Expect OMNIDIRECTIONAL DEPARTURE and/or vectoring to be provided by ATC

AFTER TAKE-OFF:

Immediately contact BURGAS APP

Strict compliance with departure procedures is necessary. If unable to comply inform ATC in good time so that alternative clearance can be issued.

WARNING:

When given a clearance to a level higher than the specified in the SID, follow published SID profile, unless restrictions are explicitly cancelled by ATC.

ROUTES:

Follow the coding on the verso of the chart.

Climb:

MNM climb gradient of 5% (304 FT/NM) to 4000 FT for MEDEM 2T and XILTI 2T due to airspace restrictions.

MNM climb gradient of 7% (425 FT/NM) to 3500 FT for MEDEM 2V and XILTI 2V due to airspace restrictions.

OMNIDIRECTIONAL DEPARTURE:

Climb on R-227 BGS VOR to 5000 FT, turn to the corresponding point or as cleared by ATC
MNM climb gradient of 5% (304 FT/NM) to 4000 FT

* Distances marked by * are approximate distances from DER

P/T	WPT ID	Flyover	Track MAG (GEO)	DIST NM	Turn Direction	Speed KT	ALT FT	Additional requirements
MEDEM 2T MEDEM TWO TANGO DEPARTURE								
<i>MNM climb gradient of 5% (304 FT/NM) to 4000FT AMSL.</i>								
CA	-	-	219°(224.4°T)	-	Right	-	500+	-
DF	BG630	Yes	-	-	Left	230-	-	-
DF	BG622	-	-	-	Right	-	-	-
TF	MEDEM	-	102°(108.1°T)	9.5	-	-	-	-
MEDEM 2V MEDEM TWO VICTOR DEPARTURE								
Only for CAT A, B, C aircraft <i>MNM climb gradient of 7% (425 FT/NM) to 3500FT AMSL.</i>								
CA	-	-	219°(224.4°T)	-	Left	200-	600+	MNM Bank angle 20°
DF	BG621	-	-	-	-	-	6300-	-
TF	MEDEM	-	102°(108.0°T)	14.1	-	-	-	-
XILTI 2T XILTI TWO TANGO DEPARTURE								
<i>MNM climb gradient of 5% (304 FT/NM) to 4000FT AMSL.</i>								
CA	-	-	219°(224.4°T)	-	Right	-	500+	-
DF	BG630	Yes	-	-	Left	230-	-	-
DF	BG622	-	-	-	Left	-	-	-
TF	BG623	-	048°(053.8°T)	7.2	-	-	-	Expected ALT 9700+ If unable to comply advise ATC
TF	XILTI	-	048°(053.9°T)	13.0	-	-	-	-
XILTI 2V XILTI TWO VICTOR DEPARTURE								
Only for CAT A, B, C aircraft <i>MNM climb gradient of 7% (425 FT/NM) to 3500FT AMSL.</i>								
CA	-	-	219°(224.4°T)	-	Left	200-	600+	MNM Bank angle 20°
DF	BG621	-	-	-	-	-	6300-	-
TF	BG622	-	102°(108.0°T)	4.6	Left	-	-	-
TF	BG623	-	048°(053.8°T)	7.2	-	-	-	Expected ALT 9700+ If unable to comply advise ATC
TF	XILTI	-	048°(053.9°T)	13.0	-	-	-	-

See page LBBG AD 2 - 61.1 for waypoint coordinates