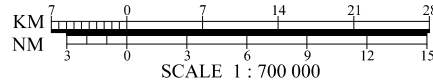
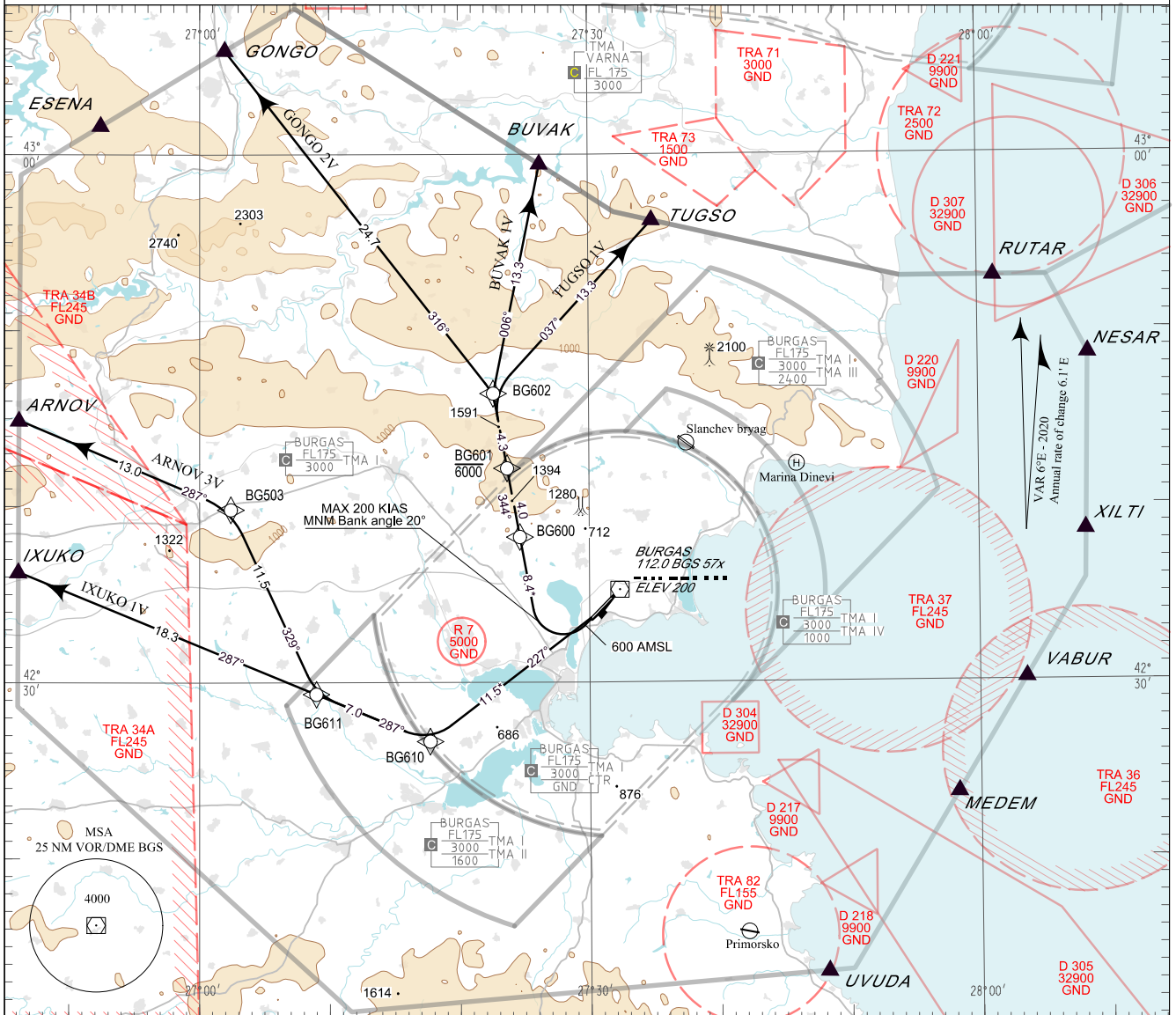


**STANDARD DEPARTURE CHART -  
INSTRUMENT (SID) - ICAO**

TRANSITION ALT 12000 FT  
TRANSITION HGT (11865) FT  
TRANSITION LEVEL BY ATC

APP	125.100	TWR	118.000	ATIS	126.980
	119.650		120.000		
	283.925		336.400		
	121.500		121.500		
	243.000		243.000		

**BURGAS**  
**RNAV RWY 22 WEST**  
ARNOV 3V, BUVAK 1V, GONGO 2V,  
IXUKO 1V, TUGSO 1V



BEARINGS, TRACKS AND RADIALS ARE MAGNETIC  
ALTITUDES (HEIGHTS) AND ELEVATIONS IN FEET  
DISTANCES IN NM

**Certification:**

RNAV-1 (P-RNAV) certification based on GNSS is required for the RNAV departure procedures

**Non RNAV 1 ACFT:**

Report "UNABLE RNAV" at first contact to ATC. Expect OMNIDIRECTIONAL DEPARTURE and/or vectoring to be provided by ATC

**AFTER TAKE-OFF:**

Immediately contact BURGAS APP

Strict compliance with departure procedures is necessary. If unable to comply inform ATC in good time so that alternative clearance can be issued.

**WARNING:**

When given a clearance to a level higher than the specified in the SID, follow published SID profile, unless restrictions are explicitly cancelled by ATC.

**ROUTES:**

Follow the coding on the verso of the chart.

**Climb:**

MNM climb gradient of 5.5% (334 FT/NM) to 4000 FT for BUVAK 1V, GONGO 2V and TUGSO 1V due to terrain.

MNM climb gradient of 5% (304 FT/NM) to 4000 FT for ARNOV 3V and IXUKO 1V due to airspace restrictions.

**OMNIDIRECTIONAL DEPARTURE:**

Climb on R-227 BGS VOR to 5000 FT, turn to the corresponding point or as cleared by ATC  
MNM climb gradient of 5% (304 FT/NM) to 4000 FT

\* Distances marked by \* are approximate distances from DER

P/T	WPT ID	Flyover	Track MAG (GEO)	DIST NM	Turn Direction	Speed KT	ALT FT	Additional requirements
<b>ARNOV 3V</b>								
ARNOV THREE VICTOR DEPARTURE								
<i>MNM climb gradient of 5% (304 FT/NM) to 4000FT AMSL.</i>								
CA	-	-	219°(224.4°T)	-	Right	-	500+	-
CF	BG610	-	227°(232.7°T)	11.5	Right	-	-	-
TF	BG611	-	287°(292.6°T)	7.0	Right	-	-	-
TF	BG503	-	329°(335.2°T)	11.5	Left	-	-	-
TF	ARNOV	-	287°(293.0°T)	13.0	-	-	-	-
<b>BUVAK 1V</b>								
BUVAK ONE VICTOR DEPARTURE								
<i>MNM climb gradient of 5.5% (334 FT/NM) to 4000FT AMSL.</i>								
CA	-	-	219°(224.4°T)	-	Right	200-	600+	MNM Bank angle 20°
DF	BG600	-	-	-	-	-	-	-
TF	BG601	-	344°(349.6°T)	4.0	-	-	6000-	-
TF	BG602	-	344°(349.6°T)	4.3	Right	-	-	-
TF	BUVAK	-	006°(011.5°T)	13.3	-	-	-	-
<b>GONGO 2V</b>								
GONGO TWO VICTOR DEPARTURE								
<i>MNM climb gradient of 5.5% (334 FT/NM) to 4000FT AMSL.</i>								
CA	-	-	219°(224.4°T)	-	Right	200-	600+	MNM Bank angle 20°
DF	BG600	-	-	-	-	-	-	-
TF	BG601	-	344°(349.6°T)	4.0	-	-	6000-	-
TF	BG602	-	344°(349.6°T)	4.3	Left	-	-	-
TF	GONGO	-	316°(322.1°T)	24.7	-	-	-	-
<b>IXUKO 1V</b>								
IXUKO ONE VICTOR DEPARTURE								
<i>MNM climb gradient of 5% (304 FT/NM) to 4000FT AMSL.</i>								
CA	-	-	219°(224.4°T)	-	Right	-	500+	-
CF	BG610	-	227°(232.7°T)	11.5	Right	-	-	-
TF	BG611	-	287°(292.6°T)	7.0	-	-	-	-
TF	IXUKO	-	287°(292.6°T)	18.3	-	-	-	-
<b>TUGSO 1V</b>								
TUGSO ONE VICTOR DEPARTURE								
<i>MNM climb gradient of 5.5% (334 FT/NM) to 4000FT AMSL.</i>								
CA	-	-	219°(224.4°T)	-	Right	200-	600+	MNM Bank angle 20°
DF	BG600	-	-	-	-	-	-	-
TF	BG601	-	344°(349.6°T)	4.0	-	-	6000-	-
TF	BG602	-	344°(349.6°T)	4.3	Right	-	-	-
TF	TUGSO	-	037°(042.5°T)	13.3	-	-	-	-

See page LBBG AD 2 - 61.1 for waypoint coordinates