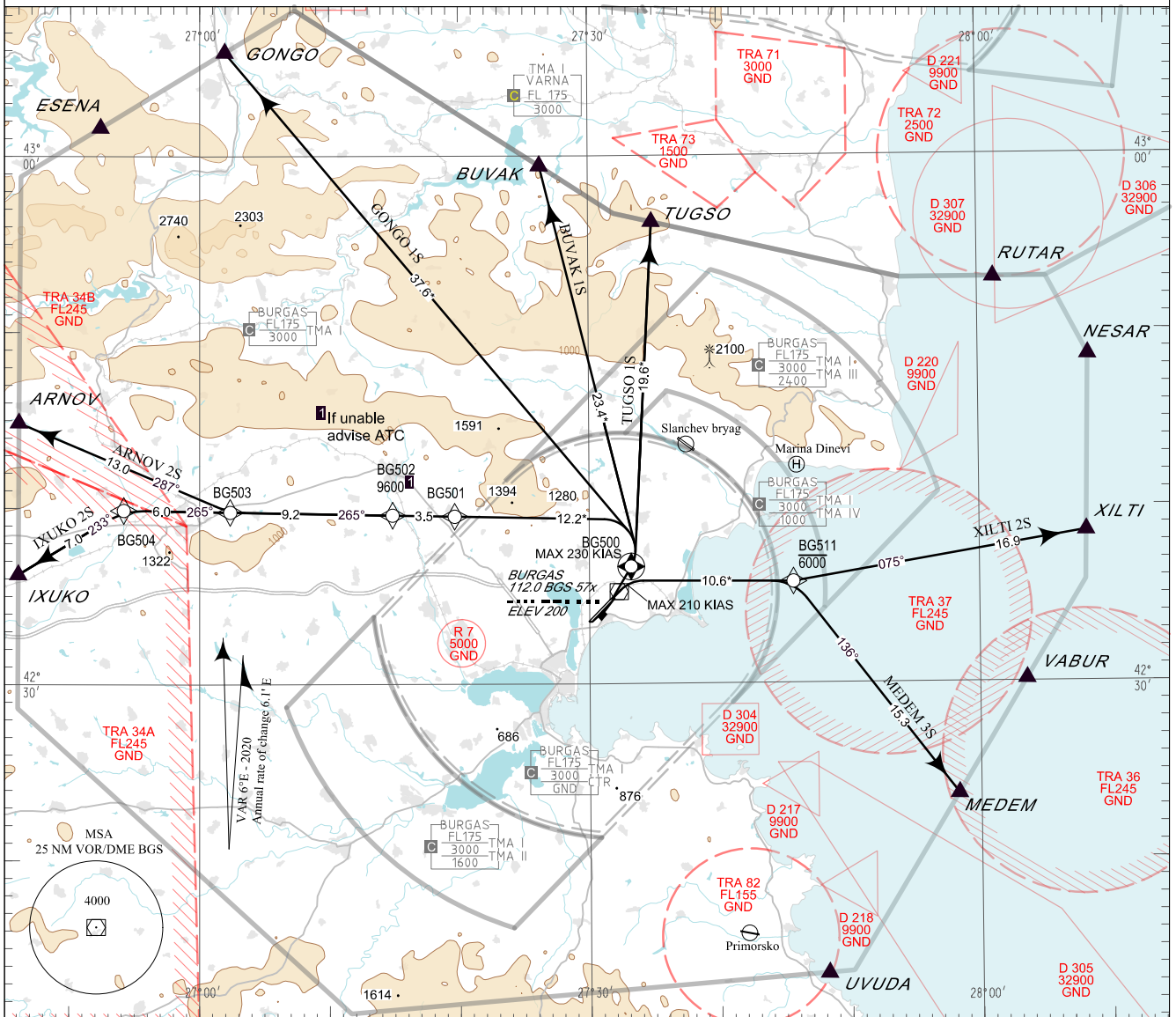


**STANDARD DEPARTURE CHART -  
INSTRUMENT (SID) - ICAO**

TRANSITION ALT 12000 FT    APP 125.100    TWR 118.000    ATIS 126.980  
TRANSITION HGT (11865) FT    119.650    120.000  
TRANSITION LEVEL BY ATC    283.925    336.400  
121.500    121.500  
243.000    243.000

**BURGAS  
RNAV RUY 04**

ARNOV 2S, BUVAK 1S, GONGO 1S,  
IXUKO 2S, MEDEM 3S, TUGSO 1S,  
XILTI 2S



BEARINGS, TRACKS AND RADIALS ARE MAGNETIC  
ALTITUDES (HEIGHTS) AND ELEVATIONS IN FEET  
DISTANCES IN NM

**Certification:**

RNAV-1 (P-RNAV) certification based on GNSS is required for the RNAV departure procedures

**Non RNAV 1 ACFT:**

Report "UNABLE RNAV" at first contact to ATC. Expect OMNIDIRECTIONAL DEPARTURE and/or vectoring to be provided by ATC

**AFTER TAKE-OFF:**

Immediately contact BURGAS APP

Strict compliance with departure procedures is necessary. If unable to comply inform ATC in good time so that alternative clearance can be issued.

**WARNING:**

When given a clearance to a level higher than the specified in the SID, follow published SID profile, unless restrictions are explicitly cancelled by ATC.

**ROUTES:**

Follow the coding on the verso of the chart.

**Climb:**

MNM climb gradient of 6% (365 FT/NM) to 4000 FT for MEDEM 3S and XILTI 2S due to airspace restrictions.

MNM climb gradient of 5.5% (334 FT/NM) to 4000 FT for GONGO 1S due to terrain.

MNM climb gradient of 5% (304 FT/NM) to 4000 FT for ARNOV 2S, BUVAK 1S, IXUKO 2S and TUGSO 1S due to airspace restrictions.

**OMNIDIRECTIONAL DEPARTURE:**

Climb straight ahead to 4000 FT, turn to the corresponding point or as cleared by ATC  
MNM climb gradient of 5% (304 FT/NM) to 4000 FT

\* Distances marked by \* are approximate distances from DER

P/T	WPT ID	Flyover	Track MAG (GEO)	DIST NM	Turn Direction	Speed KT	ALT FT	Additional requirements
<b>ARNOV 2S</b> ARNOV TWO SIERRA DEPARTURE								
<i>MNM climb gradient of 5% (304 FT/NM) to 4000FT AMSL.</i>								
CA	-	-	039°(044.4°T)	-	Left	230-	520+	-
DF	BG500	Yes	-	-	Left	-	-	-
DF	BG501	-	-	-	-	-	-	-
TF	BG502	-	265°(271.2°T)	3.5	-	-	-	Expected ALT 9600+ If unable to comply advise ATC
TF	BG503	-	265°(271.2°T)	9.2	Right	-	-	-
TF	ARNOV	-	287°(293.0°T)	13.0	-	-	-	-
<b>BUVAK 1S</b> BUVAK ONE SIERRA DEPARTURE								
<i>MNM climb gradient of 5% (304 FT/NM) to 4000FT AMSL.</i>								
CA	-	-	039°(044.4°T)	-	Left	230-	520+	-
DF	BG500	Yes	-	-	Left	-	-	-
DF	BUVAK	-	-	-	-	-	-	-
<b>GONGO 1S</b> GONGO ONE SIERRA DEPARTURE								
<i>MNM climb gradient of 5.5% (334 FT/NM) to 4000FT AMSL.</i>								
CA	-	-	039°(044.4°T)	-	Left	230-	520+	-
DF	BG500	Yes	-	-	Left	-	-	-
DF	GONGO	-	-	-	-	-	-	-
<b>IXUKO 2S</b> IXUKO TWO SIERRA DEPARTURE								
<i>MNM climb gradient of 5% (304 FT/NM) to 4000FT AMSL.</i>								
CA	-	-	039°(044.4°T)	-	Left	230-	520+	-
DF	BG500	Yes	-	-	Left	-	-	-
DF	BG501	-	-	-	-	-	-	-
TF	BG502	-	265°(271.2°T)	3.5	-	-	-	Expected ALT 9600+ If unable to comply advise ATC
TF	BG503	-	265°(271.2°T)	9.2	-	-	-	-
TF	BG504	-	265°(271.0°T)	6.0	Left	-	-	-
TF	IXUKO	-	233°(238.8°T)	7.0	-	-	-	-

P/T	WPT ID	Flyover	Track MAG (GEO)	DIST NM	Turn Direction	Speed KT	ALT FT	Additional requirements
<b>MEDEM 3S</b> MEDEM THREE SIERRA DEPARTURE								
<i>MNM climb gradient of 6% (365 FT/NM) to 4000FT AMSL.</i>								
CA	-	-	039°(044.4°T)	-	Right	210-	1600+	-
DF	BG511	-	-	-	Right	-	6000-	-
TF	MEDEM	-	136°(142.2°T)	15.3	-	-	-	-
<b>TUGSO 1S</b> TUGSO ONE SIERRA DEPARTURE								
<i>MNM climb gradient of 5% (304 FT/NM) to 4000FT AMSL.</i>								
CA	-	-	039°(044.4°T)	-	Left	230-	520+	-
DF	BG500	Yes	-	-	Left	-	-	-
DF	TUGSO	-	-	-	-	-	-	-
<b>XILTI 2S</b> XILTI TWO SIERRA DEPARTURE								
<i>MNM climb gradient of 6% (365 FT/NM) to 4000FT AMSL.</i>								
CA	-	-	039°(044.4°T)	-	Right	210-	1600+	-
DF	BG511	-	-	-	Left	-	6000-	-
TF	XILTI	-	075°(080.3°T)	16.9	-	-	-	-

See page LBBG AD 2 - 61.1 for waypoint coordinates

INTENTIONALLY LEFT BLANK