

**ATC SURVEILLANCE**  
**MINIMUM ALTITUDE**  
**CHART - ICAO**

AERODROME ELEV 135 FT

TRANSITION ALT 10500 FT  
TRANSITION LEVEL BY ATC

APP 125.100 378.350 TWR 118.000 336.400 ATIS 126.980  
119.650 120.000  
121.500 243.000 121.500 243.000

**BURGAS**

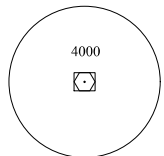
**GENERAL INFORMATION**

1. Only the significant obstacles and dominant spot heights are shown.
2. The minimum altitude shown within the Minimum Vectoring Altitude (MVA) areas and Intermediate Approach Area (IAA) ensure terrain clearance in conformity with Doc 8168 PANS-OPS, Vol II, Part II, Section 2, Chapter 6 in respect to obstacles within the MVA area and IAA and airspace structure (lower limit of controlled airspace plus buffer of 300 m (1000 ft)).
3. Further descent below MVA may be given within the IAA shown when the aircraft is within 40° leg to final approach track or on final approach track. Below the MVA areas or IAA, IFR flights will normally be cleared on published IFR procedures only.
4. Values of altitudes in brackets are corrected for low temperatures and apply always in the period between first AIRAC date in NOVEMBER and last AIRAC date in MARCH, unless published otherwise by a NOTAM.
5. This chart may only be used for cross-checking of altitudes assigned while under radar control.

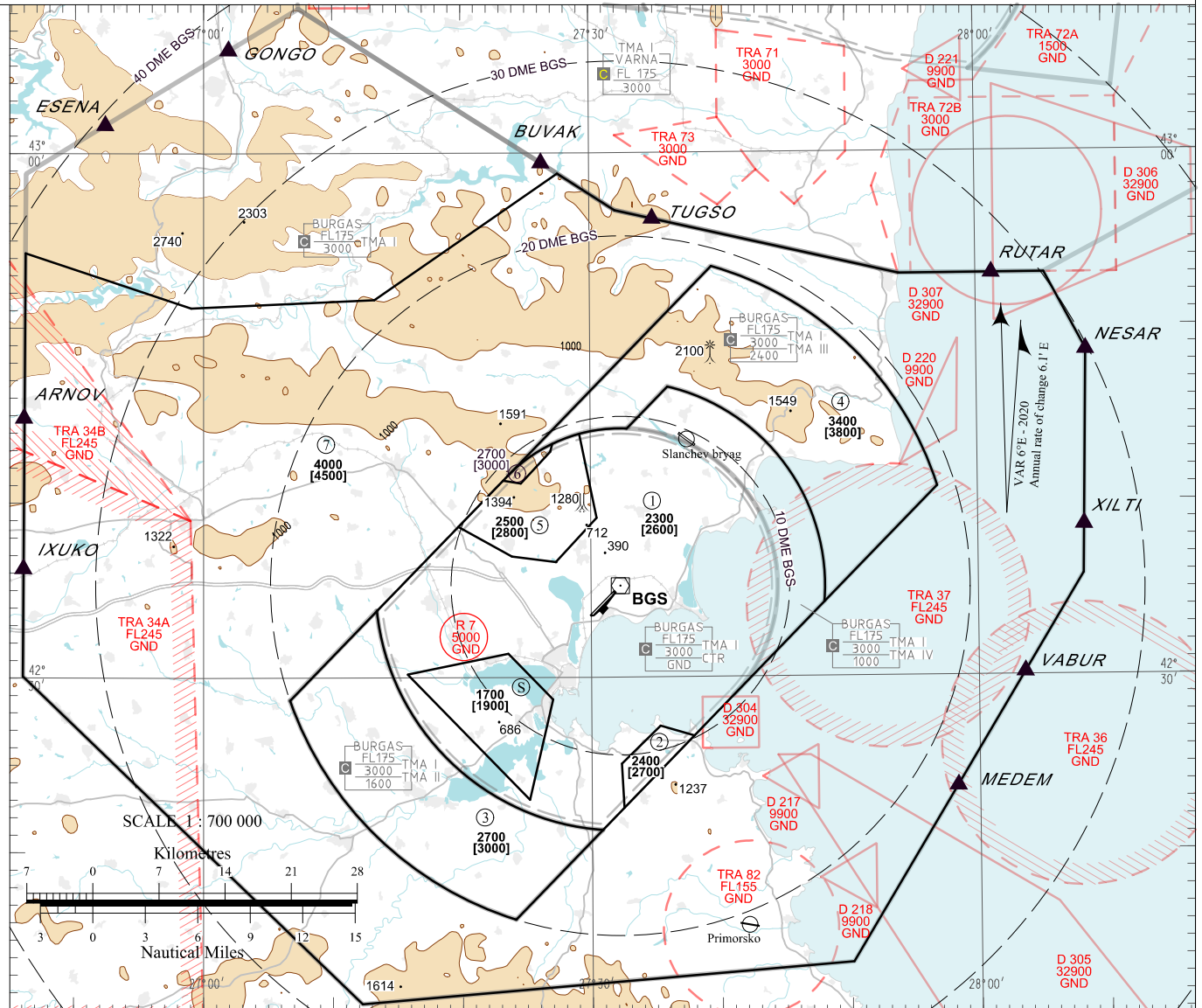
**OUTSIDE THE DESIGNATED MVA AREAS**

The minimum altitude to be allocated by radar controller will be either the MSA or 300 m (1000 ft) above any fixed obstacles within 9.3 km (5 NM) of the aircraft.

MSA  
25 NM VOR/DME BGS



ALTITUDES AND ELEVATIONS IN FEET  
DISTANCES IN NM



List of Coordinates of MVA Areas in TMA BURGAS

<b>1</b>	<b>MNM ALT 2300 [2600]</b> 424637N 0273600E - clockwise arc with radius 11.7NM centered on BGS DVOR/DME - 423415N 0274804E - 422638N 0273757E - 422712N 0273520E - 422503N 0273218E - 422231N 0273230E - 422116N 0273050E - clockwise arc with radius 14.0NM centered on BGS DVOR/DME - 423351N 0271325E - 423839N 0271945E - 423656N 0272353E - 423636N 0272717E - 423907N 0273027E - 424356N 0272909E - clockwise arc with radius 9.0NM centered on BGS DVOR/DME - 424414N 0273250E - 424637N 0273600E	<b>5</b>	<b>MNM ALT 2500 [2800]</b> 424356N 0272909E - 423907N 0273027E - 423636N 0272717E - 423656N 0272353E - 423839N 0271945E - 424116N 0272313E - 424106N 0272435E - 424255N 0272653E - 424322N 0272703E - counterclockwise arc with radius 9.0NM centered on BGS DVOR/DME - 424356N 0272909E
<b>2</b>	<b>MNM ALT 2400 [2700]</b> 422231N 0273230E - 422503N 0273218E - 422712N 0273520E - 422638N 0273757E - 422231N 0273230E	<b>6</b>	<b>MNM ALT 2700 [3000]</b> 424322N 0272703E - 424255N 0272653E - 424106N 0272435E - 424116N 0272313E - 424132N 0272333E - counterclockwise arc with radius 9.0NM centered on BGS DVOR/DME - 424322N 0272703E
<b>3</b>	<b>MNM ALT 2700 [3000]</b> 423351N 0271325E - counterclockwise arc with radius 14.0NM centered on BGS DVOR/DME - 422116N 0273050E - 421609N 0272406E - clockwise arc with radius 20.0NM centered on BGS DVOR/DME - 422843N 0270641E - 423351N 0271325E	<b>7</b>	<b>MNM ALT 4000 [4500]</b> 425418N 0264609E - 422839N 0264602E - 421118N 0271138E - 421338N 0275007E - 423547N 0280810E - 424835N 0280830E - 425301N 0280519E - 425301N 0275402E - 425643N 0273159E - 425850N 0272732E - 425137N 0271317E - 425110N 0265902E - 425418N 0264609E
<b>4</b>	<b>MNM ALT 3400 [3800]</b> 425329N 0273928E - clockwise arc with radius 19.0NM centered on BGS DVOR/DME - 424051N 0275653E - 423415N 0274804E - counterclockwise arc with radius 11.7NM centered on BGS DVOR/DME - 424637N 0273600E - 424414N 0273250E - counterclockwise arc with radius 9.0NM centered on BGS DVOR/DME - 424356N 0272909E - counterclockwise arc with radius 9.0NM centered on BGS DVOR/DME - 424322N 0272703E - counterclockwise arc with radius 9.0NM centered on BGS DVOR/DME - 424132N 0272333E - 425329N 0273928E		

Intermediate Approach Areas

<b>RWY 04</b>	<b>IAA</b>	<b>MNM ALT 1700 [1900]</b>
		423122N 0272335E - 422844N 0272702E - 422301N 0272512E - 423012N 0271548E - 423122N 0272335E